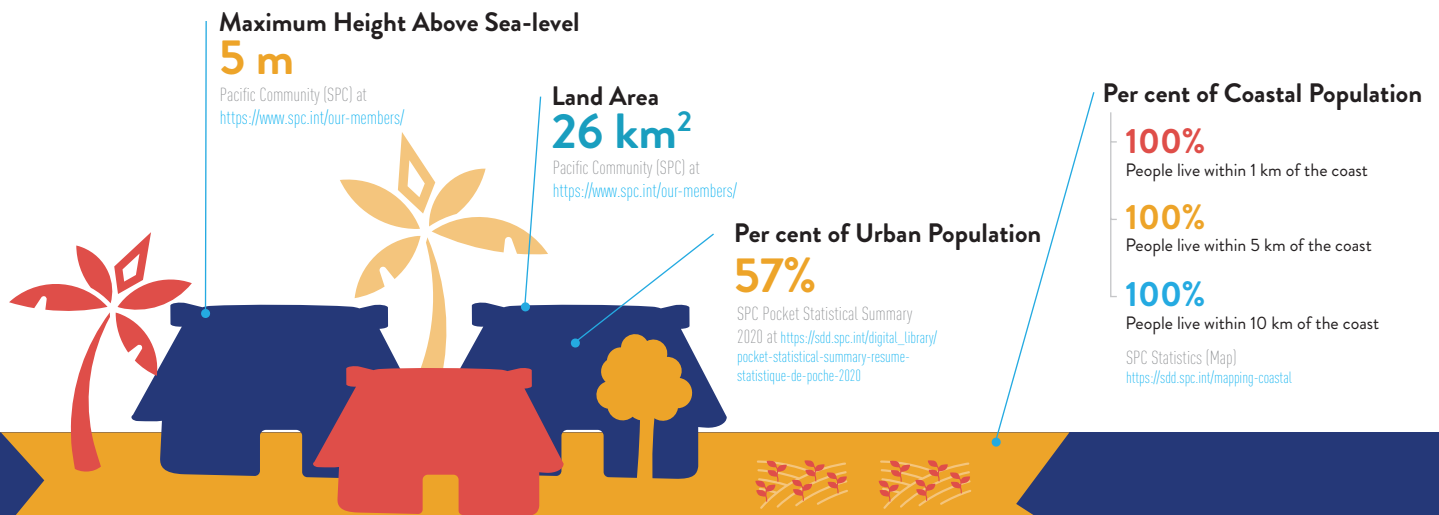


# PACIFIC RISK PROFILE TUVALU



## Basic Country Statistics



**Total Population**  
(2020 Estimate)

**10,577**  
persons



**Total Male & Female Population**  
(2020 Estimate)

**Male**  
**5,437**  
persons or 51.40%

**Female**  
**5,140**  
persons or 48.60%

SPC Statistics (Population) at <https://sdd.spc.int/topic/population>

**Gross Domestic Product (GDP) per Capita**

**US\$4,223**  
(2019)

SPC Pocket Statistical Summary 2020 at [https://sdd.spc.int/digital\\_library/pocket-statistical-summary-resume-statistique-de-poche-2020](https://sdd.spc.int/digital_library/pocket-statistical-summary-resume-statistique-de-poche-2020)



**Disability Prevalence**

**1.9%**

UNESCAP (2019) Disability at a Glance at <https://www.unescap.org/publications/disability-glance-2019>

**Women's Labour Force Participation Rate**

**51%**

**Women's Share of Wage Employment in the Non-agriculture Sector**

**43.5%**

ADB (2016) Gender Statistics for the Pacific and Timor-Leste at <https://www.adb.org/publications/gender-statistics-pacific-and-timor-leste>

**Per cent of Children, Youth and Elderly**

**Children (<14)**  
**32%**

**Youth (15-24)**  
**17%**

**Elderly (60+)**  
**11%**



**Population Density**

**408** persons/km<sup>2</sup>

SPC Pocket Statistical Summary 2020 at [https://sdd.spc.int/digital\\_library/pocket-statistical-summary-resume-statistique-de-poche-2020](https://sdd.spc.int/digital_library/pocket-statistical-summary-resume-statistique-de-poche-2020)

Pacific Risk Profile is a snapshot of climate and disaster risk information that is collected from credible open data sources. It is intended to provide DFAT program managers and implementing partners with easy access to essential risk information. When employing risk information in specific program contexts, however, it is strongly encouraged to study the original risk information sources or even undertake proper risk assessments.

For more information or other technical support, you may contact the Australia Pacific Climate Partnership Support Unit at [helpdesk@apclimatepartnership.com.au](mailto:helpdesk@apclimatepartnership.com.au).

Published in July 2021

## Hazard Likelihood



**Landslide**  
Very Low Likelihood



**Coastal Flood**  
High Likelihood



**Wildfire**  
Very Low Likelihood



**Tsunami**  
Medium Likelihood

### Legend

	Very low		Medium
	Low		High

ThinkHazard! at <https://thinkhazard.org/en/report/252-tuvalu>

## Major Disasters 2011-2020

Per cent of Disaster Type  
(Major Disasters 2011-2020)



Total Population Affected



Number of Major  
Cyclones in 2011-2020



EM-DAT Database (February 2021) at <https://www.emdat.be/>

## Economic Loss Due to Disasters

Total Average Annual Losses (AAL)

**US\$1.68 million**

UNESCAP (2020) The Disaster Riskscape across the Pacific Small Island Developing States at <https://www.unescap.org/sites/default/files/100-APDR-Subreport-Pacific-SIDS.pdf>

AAL as a Percentage of GDP

**3.98%**

UNESCAP (2020) The Disaster Riskscape across the Pacific Small Island Developing States

## Risk Index

Climate Risk Index for 1999-2018

Between 1999 and 2018, **Tuvalu** was the **128th** country most affected by extreme weather events .

Global Climate Risk Index 2020 at <https://www.germanwatch.org/en/17307>

INFORM Covid-19 Risk



Tuvalu's risk level is high when assessing the potential humanitarian impacts of Covid-19 in combination with other pre-existing crisis risks.

INFORM Covid-19 Warning (beta version) at <https://drmkc.jrc.ec.europa.eu/inform-index/INFORM-Covid-19/INFORM-Covid-19-Warning-beta-version>

## Climate Projection

### Cyclone



Tropical cyclones are projected to be less frequent but more intense.

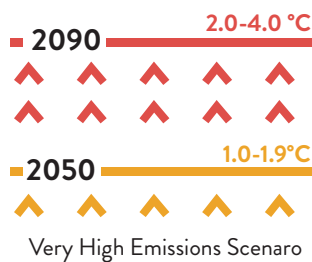
### Rainfall



Wet and dry years will still occur as a result of natural variability. Extreme rainfall events are projected to become more frequent and more intense.

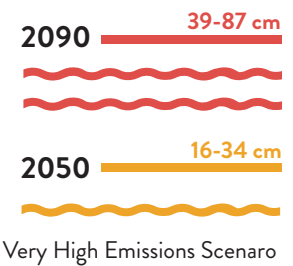
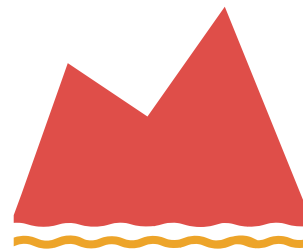
### Temperature

Annual mean temperatures and extremely high daily temperatures will continue to rise.



### Sea-level Rise

Sea level is expected to continue to rise



### Ocean Acidification



Ocean acidification is expected to continue.

### Coral Bleaching Risk



The risk of coral bleaching is expected to increase.

### El Niño / La Niña



El Niño and La Niña events will continue to occur in the future.

In Funafuti, **El Niño** events tend to **bring wetter, warmer conditions** than normal, while **La Niña** events usually **bring drier, cooler than normal conditions**.