



Australian Government  
Department of Foreign Affairs and Trade

A close-up photograph of a person's hands holding a small green plant seedling. The background is a blurred world map with a grid overlay. The image is framed by a green border with a diagonal line pattern.

# AUSTRALIAN ENGAGEMENT WITH DEVELOPING COUNTRIES

Part 1: Bilateral Relationships at a Glance 2015-16

ISBN Book (softcover): 978-1-74322-355-0  
PDF document: 978-1-74322-354-3

Cover photograph:

Income generating project in Jhala Timbinyawa, Sri Lanka. Photo: DFAT

© Commonwealth of Australia 2017

#### Creative Commons



With the exception of the Commonwealth Coat of Arms, any material protected by a trade mark, and where otherwise noted, this work is licensed under a creative Commons Attribution 3.0 Australia licence

(<http://creativecommons.org/licenses/by/3.0/au/>).

The details for the relevant licence conditions are available on the Creative commons website (accessible using the links provided) as is the full legal code for the CC BY 3 AU licence.

The document must be attributed as: Commonwealth of Australia, DFAT, *Australian Engagement with Developing Countries Part 1: Bilateral Relationships at a Glance 2015-16*.

Published by the Department of Foreign Affairs and Trade, Canberra, May 2017.

# Australian Engagement with Developing Countries

Part 1: Bilateral Relationships at a Glance 2015-16



# CONTENTS

---

## Ministers' Foreword 07

---

### Pacific

Cook Islands	10
Federated States of Micronesia	12
Fiji	14
Kiribati	16
Marshall Islands	18
Nauru	20
Niue and Tokelau	22
Palau	24
Papua New Guinea	26
Samoa	28
Solomon Islands	30
Tonga	32
Tuvalu	34
Vanuatu	36

---

### South East and East Asia

Cambodia	40
Indonesia	42
Laos	44
Mongolia	46
Myanmar	48
Philippines	50
Timor-Leste	52
Vietnam	54

---

### South and West Asia

Afghanistan	58
Bangladesh	60
Bhutan	62
Maldives	64
Nepal	66
Pakistan	68
Sri Lanka	70

---

### Sub-Saharan Africa

Sub-Saharan Africa	74
--------------------	----

---

### Palestinian Territories

Palestinian Territories	78
-------------------------	----



## MINISTERS' FOREWORD



This report, *Australian Engagement with Developing countries Part 1: Bilateral Relationships at a Glance 2015-16*, provides a snapshot of Australia's relationships with its bilateral aid partners over the past financial year. Our relationships with developing countries are vibrant and diverse – we share economic, security and strategic interests, as well as growing people-to-people links.

Australia provided \$4 billion in Official Development Assistance in 2015-16. We delivered aid in 32 countries and regions, with over 90 per cent of bilateral assistance focussed on our Indo-Pacific neighbourhood.

The Indo-Pacific is central to Australia's future security and we work closely with our neighbours on maritime security, counter terrorism, combating transnational crime, people smuggling and human trafficking. Our investments are helping countries to meet these challenges, consequently building confidence, encouraging economic activity and facilitating greater trade and investment.

In fast-growing Asia, Australia's engagement is transforming from a donor-recipient relationship to a full economic partnership. The Association of South East Asian Nations is now Australia's second largest trading partner and we are their eighth largest external trading partner. Bilateral trade was worth almost \$100 billion in 2015. Our investment links continue to grow strongly – from 2014 to 2015 two-way investment grew 12 per cent to over \$227 billion.

In the Pacific, a region with unique development, economic and security challenges, Australia is the primary donor. We are partnering with the private

sector on development and humanitarian challenges to generate commercial and social returns. Programs like the Seasonal Worker Program, which saw 4,490 Pacific workers travel to Australia for seasonal employment in 2015-16, provide employment and training opportunities for Pacific Islanders, and provide labour for Australian businesses.

Strong people-to-people links with our region are critical in harnessing the opportunities and tackling the challenges we collectively face. Some 2.6 million Australians travelled to our partner developing countries and almost 615,000 people from these countries visited Australia in 2015-16. We welcomed almost 100,000 students from developing countries in 2015. By the end of 2016, the New Colombo Plan, Australia's signature overseas study initiative, will have seen 10,000 young Australians studying, living and working in the Indo-Pacific region.

Our diaspora communities make an enormous contribution to Australia's bilateral relationships with developing countries and promote economic growth here and abroad. In 2015, remittances almost equalled our foreign aid budget, with an estimated \$3.5 billion flowing back to our 31 bilateral aid partners from diaspora communities based in Australia.

Australia is deeply invested in the success of our bilateral aid partners. *Bilateral Relationships at a Glance* demonstrates the breadth and depth of Australia's relationships with developing countries.

A handwritten signature in blue ink that reads "Julie Bishop".

**The Hon Julie Bishop MP**  
Minister for Foreign Affairs

A handwritten signature in black ink that reads "Concetta Fierravanti-Wells".

**Senator the Hon Concetta Fierravanti-Wells**  
Minister for International Development and the Pacific



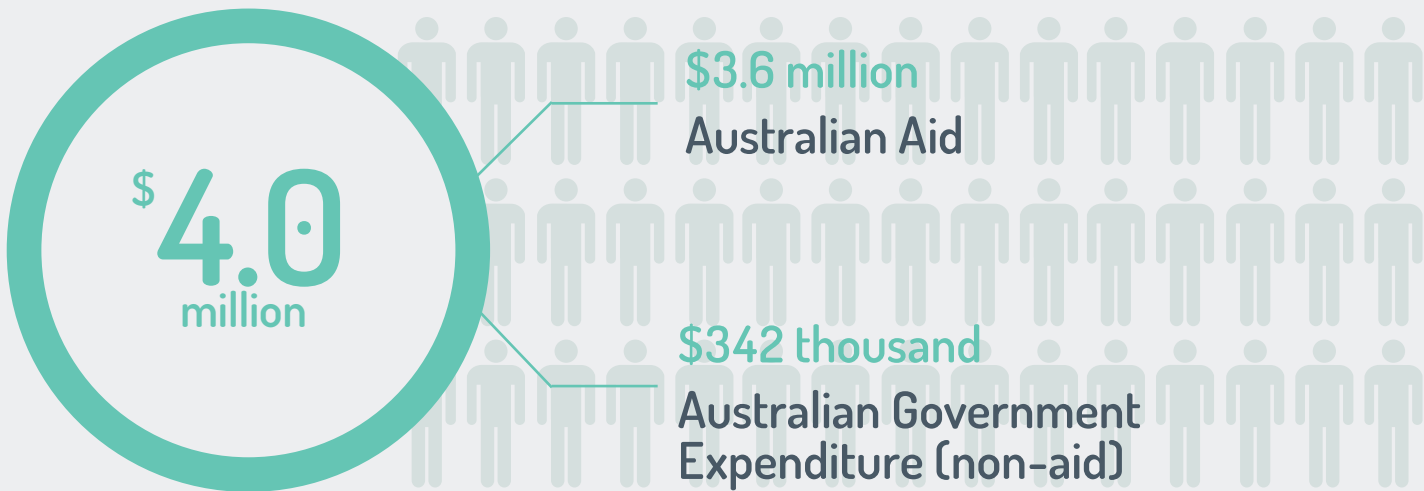
# PACIFIC





# AUSTRALIA AND THE COOK ISLANDS

## TOTAL AUSTRALIAN GOVERNMENT SUPPORT\* (2015-16)



TWO-WAY GOODS AND SERVICES TRADE (2015)

**\$48** MILLION

AUSTRALIAN INVESTMENT (2015)

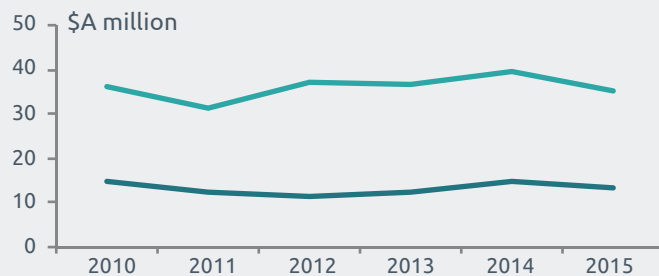
**\$29** MILLION

COOK ISLANDS INVESTMENT (2015)

**\$397** MILLION

## TWO-WAY TRADE

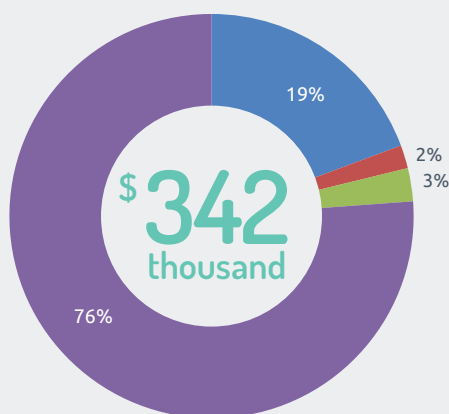
- imports to Australia from the Cook Islands
- exports from Australia to the Cook Islands



Sources: Department of Foreign Affairs and Trade; New Colombo Plan (2016); Australian Bureau of Statistics – trade and investment (2015), resident population by country of birth (Census 2011); Department of Immigration and Border Protection – visitors (2015-16); World Bank – remittances (2015)  
 \*Total Australian Government support comprises Official Development Assistance (aid) and Other Official flows (non-aid), based on OECD Development Assistance Committee guidelines.

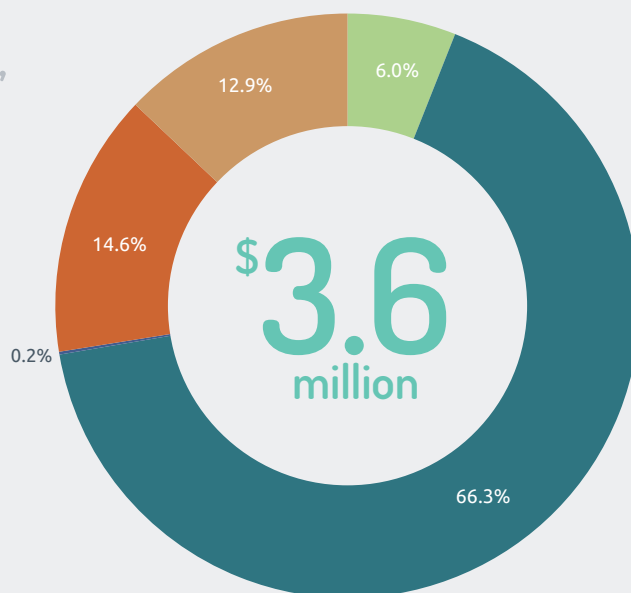
## Australian Government Expenditure (non-aid) 2015-16

- Teacher and student exchanges
- Security policy engagement
- Sports and recreation collaboration
- Wildlife and marine resource protection



## Australian Aid to the Cook Islands, by Investment Priorities 2015-16

- Building resilience
- Education
- Effective governance
- Health
- Infrastructure and trade



## CONNECTING PEOPLE



AUSTRALIAN SHARE OF TOTAL OFFICIAL DEVELOPMENT ASSISTANCE TO THE COOK ISLANDS - 9.4%

Further information: *Australian Engagement with Developing Countries: Part 2: Official Sector Statistical Summary 2015-16.*



# AUSTRALIA AND FEDERATED STATES OF MICRONESIA

## TOTAL AUSTRALIAN GOVERNMENT SUPPORT\* (2015-16)

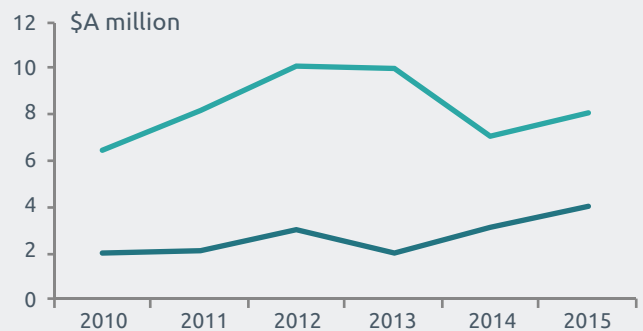


## TWO-WAY GOODS AND SERVICES TRADE (2015)

**\$12 MILLION**

## TWO-WAY TRADE

- imports to Australia from Federated States of Micronesia
- exports from Australia to Federated States of Micronesia



Sources: Department of Foreign Affairs and Trade – scholarships (2016), volunteers (2015-16); Department of Education; Australian Bureau of Statistics – trade and investment (2015), resident population by country of birth (Census 2011); Department of Immigration and Border Protection – visitors (2015-16)  
 \*Total Australian Government support comprises Official Development Assistance (aid) and Other Official flows (non-aid), based on OECD Development Assistance Committee guidelines.

## Australian Government Expenditure (non-aid) 2015-16

- Security policy engagement
- Wildlife and marine resource protection

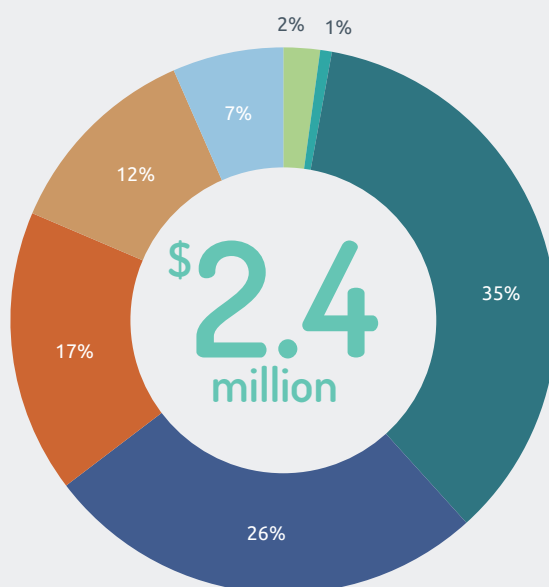


## CONNECTING PEOPLE

	Australian Government-supported volunteers	7
	Micronesian recipients of Australia Awards	8
	Australian visitors to Micronesia	300
	Micronesian visitors to Australia	200
	Resident Australian population born in Micronesia	20
	Australian NGO Cooperation Program	\$58,000

## Australian Aid to Federated States of Micronesia, by Investment Priorities 2015-16

- Agriculture
- Building resilience
- Education
- Effective governance
- General development support
- Health
- Infrastructure and trade



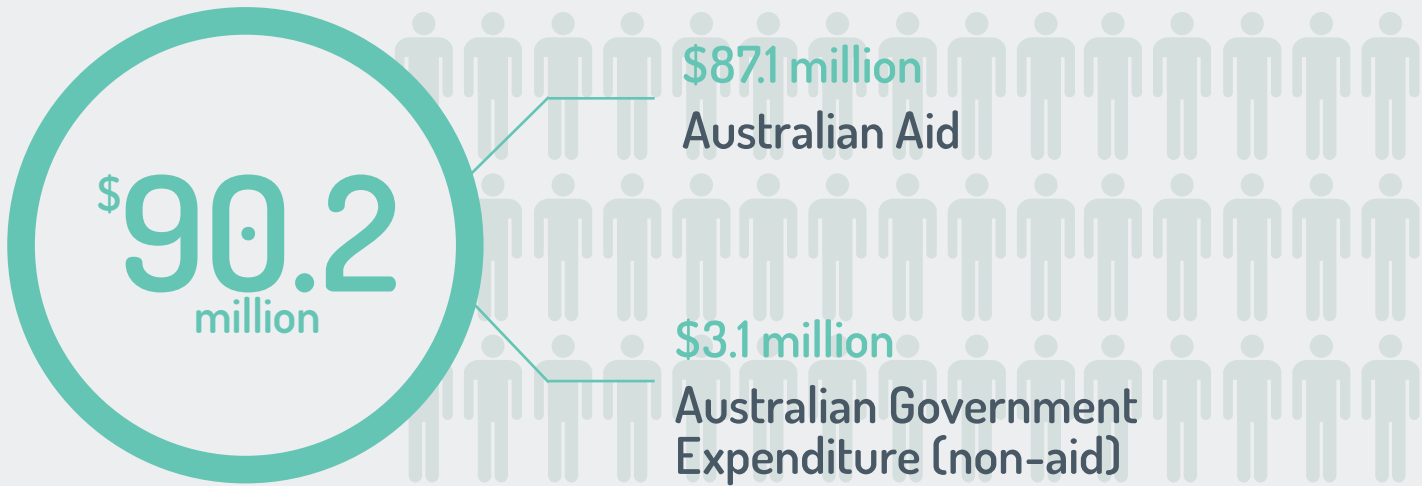
AUSTRALIAN SHARE OF TOTAL OFFICIAL DEVELOPMENT ASSISTANCE TO MICRONESIA - 3.1%  
 AUSTRALIAN AID COMPARED TO MICRONESIA'S ECONOMY - 1.1% OF GNI

Further information: *Australian Engagement with Developing Countries: Part 2: Official Sector Statistical Summary 2015-16.*



# AUSTRALIA AND FIJI

## TOTAL AUSTRALIAN GOVERNMENT SUPPORT\* (2015-16)



TWO-WAY GOODS AND SERVICES TRADE (2015)

**\$1.8 BILLION**

AUSTRALIAN INVESTMENT (2015)

**\$1.9 BILLION**

FIJIAN INVESTMENT (2015)

**\$498 MILLION**

SEASONAL WORKERS FROM FIJI

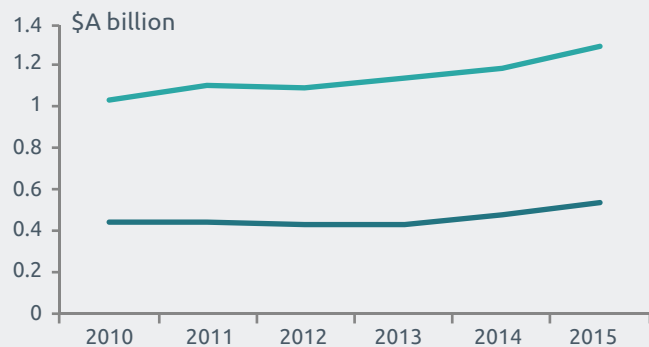
**160**

MIGRANT REMITTANCES FROM AUSTRALIA TO FIJI

**US \$74 MILLION**

## TWO-WAY TRADE

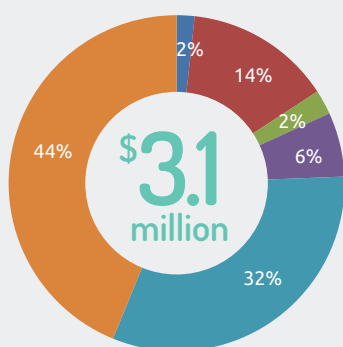
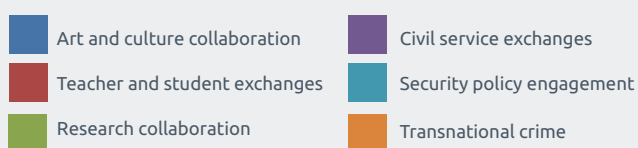
- imports to Australia from Fiji
- exports from Australia to Fiji



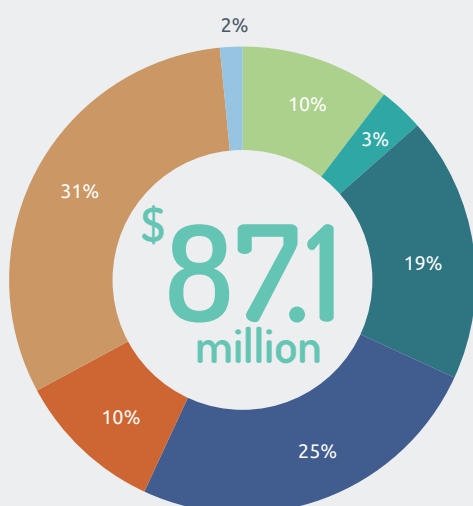
Sources: Department of Foreign Affairs and Trade – scholarships (2016), volunteers (2015-16); New Colombo Plan (2016); Department of Education – international students (2015); Australian Bureau of Statistics – trade and investment (2015), resident population by country of birth (Census 2011); Department of Immigration and Border Protection – visitors, seasonal workers, (2015-16); World Bank – remittances (2015)

\*Total Australian Government support comprises Official Development Assistance (aid) and Other Official flows (non-aid), based on OECD Development Assistance Committee guidelines.

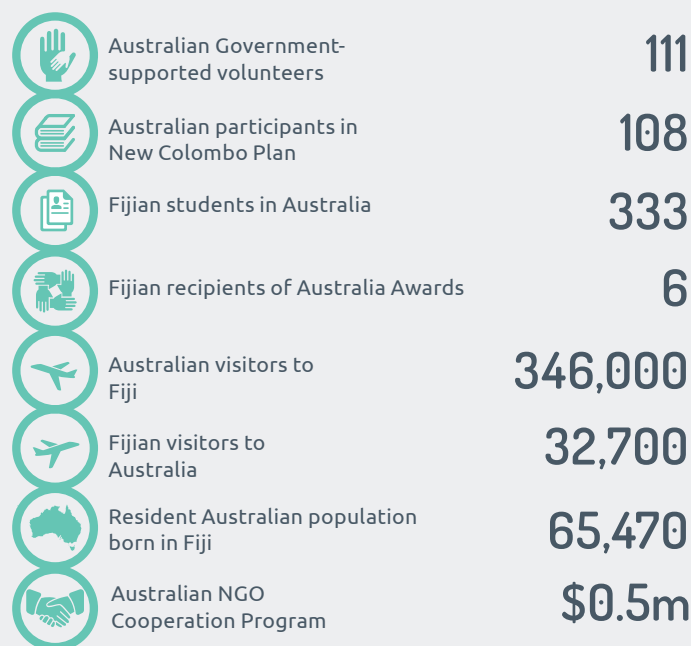
## Australian Government Expenditure (non-aid) 2015-16



## Australian Aid to Fiji, by Investment Priorities 2015-16



## CONNECTING PEOPLE



## Fiji - Tropical Cyclone Winston Response



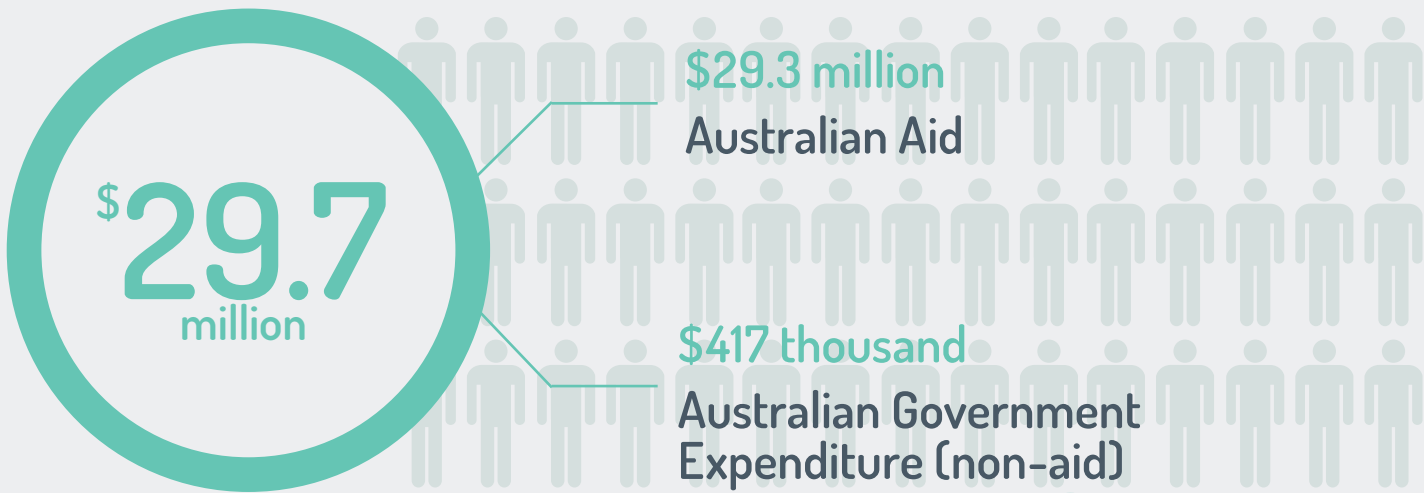
AUSTRALIAN SHARE OF TOTAL OFFICIAL DEVELOPMENT ASSISTANCE TO FIJI - 53.4%  
 AUSTRALIAN AID COMPARED TO FIJI'S ECONOMY - 1.2% OF GNI

Further information: *Australian Engagement with Developing Countries: Part 2: Official Sector Statistical Summary 2015-16.*



# AUSTRALIA AND KIRIBATI

## TOTAL AUSTRALIAN GOVERNMENT SUPPORT\* (2015-16)



TWO-WAY GOODS AND SERVICES TRADE (2015)

**\$54 MILLION**

AUSTRALIAN INVESTMENT (2015)

**\$13 MILLION**

SEASONAL WORKERS FROM KIRIBATI

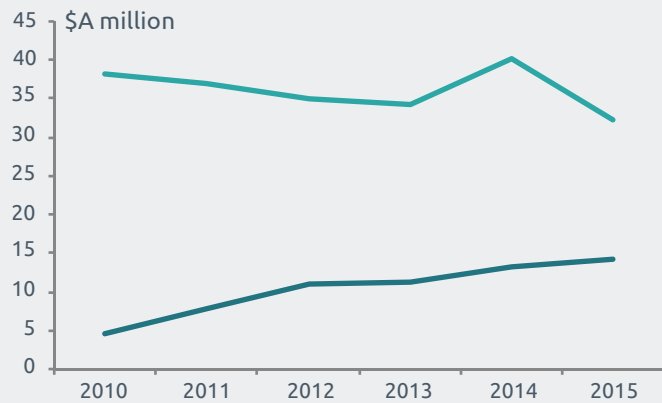
**20**

MIGRANT REMITTANCES FROM AUSTRALIA TO KIRIBATI

**US \$3 MILLION**

## TWO-WAY TRADE

- imports to Australia from Kiribati
- exports from Australia to Kiribati

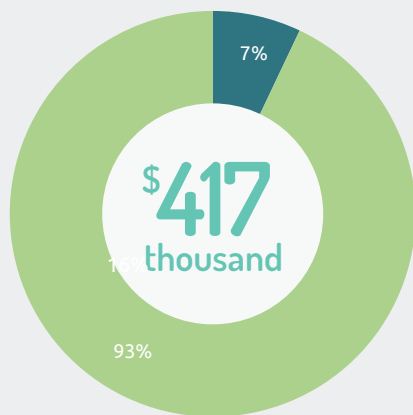


Sources: Department of Foreign Affairs and Trade – scholarships (2016), volunteers (2015-16); Department of Education – international students (2015); Australian Bureau of Statistics – trade and investment (2015), resident population by country of birth (Census 2011); Department of Immigration and Border Protection – visitors, seasonal workers, (2015-16); World Bank – remittances (2015)

\*Total Australian Government support comprises Official Development Assistance (aid) and Other Official flows (non-aid), based on OECD Development Assistance Committee guidelines.

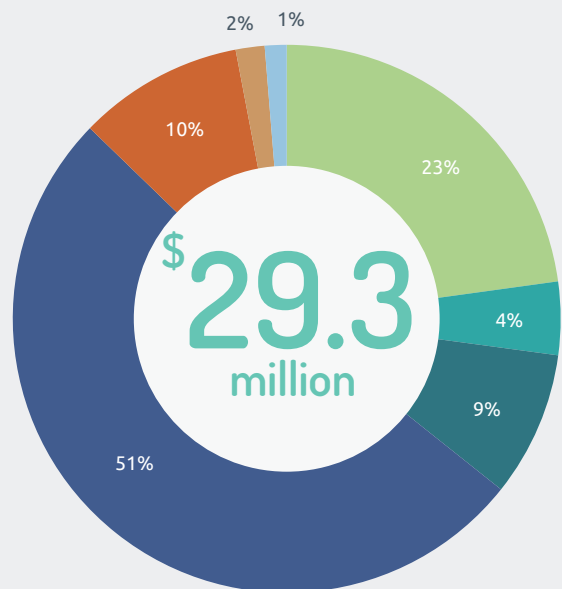
## Australian Government Expenditure (non-aid) 2015-16

- Security policy engagement
- Wildlife and marine resource protection

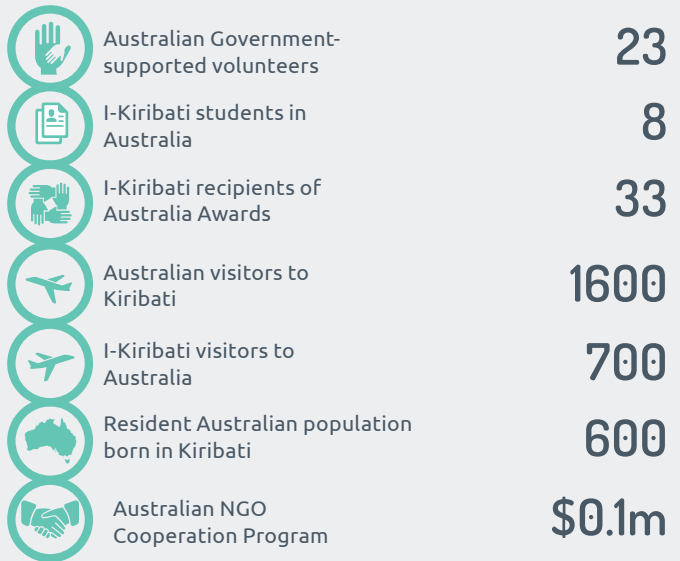


## Australian Aid to Kiribati, by Investment Priorities 2015-16

- Agriculture
- Building resilience
- Education
- Effective governance
- General development support
- Health
- Infrastructure and trade



## CONNECTING PEOPLE



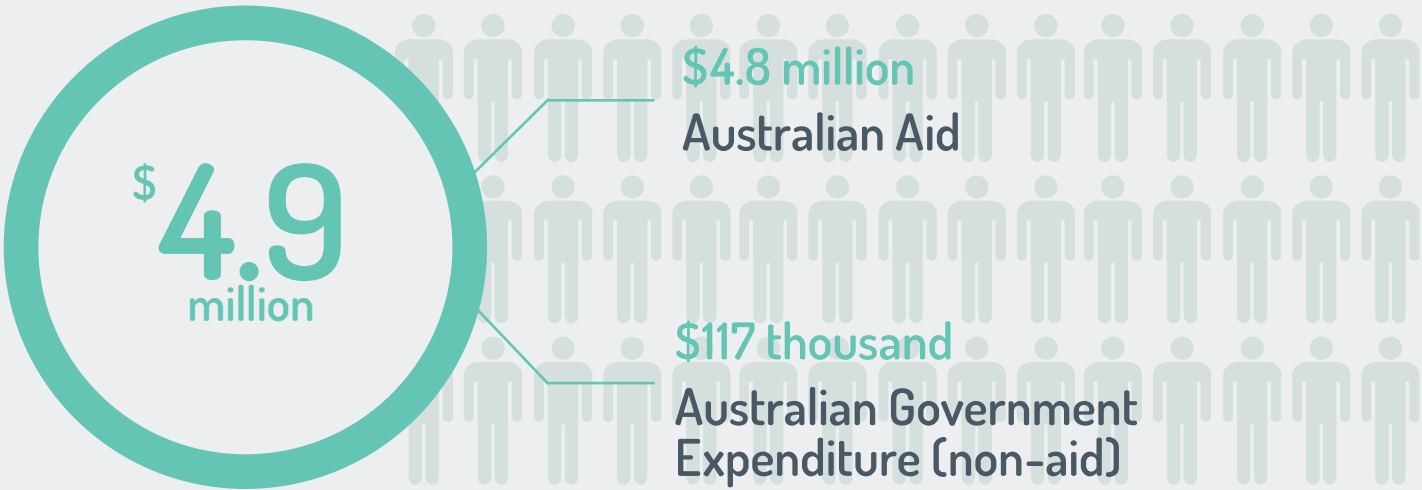
AUSTRALIAN SHARE OF TOTAL OFFICIAL DEVELOPMENT ASSISTANCE TO KIRIBATI - 30.8%  
 AUSTRALIAN AID COMPARED TO KIRIBATI'S ECONOMY - 71% OF GNI

Further information: *Australian Engagement with Developing Countries: Part 2: Official Sector Statistical Summary 2015-16.*



# AUSTRALIA AND THE MARSHALL ISLANDS

TOTAL AUSTRALIAN GOVERNMENT SUPPORT\* (2015-16)



TWO-WAY GOODS AND SERVICES TRADE (2015)

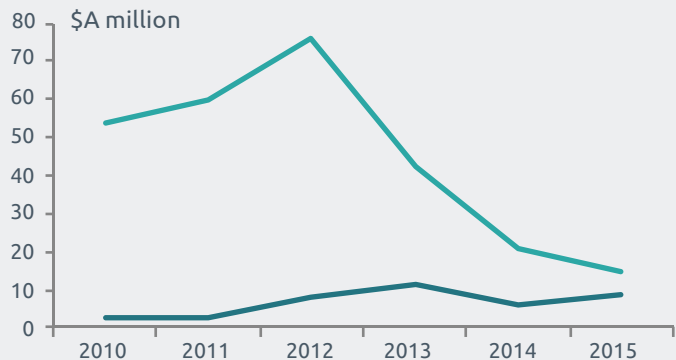
**\$23 MILLION**

AUSTRALIAN INVESTMENT (2015)

**\$378 MILLION**

## TWO-WAY TRADE

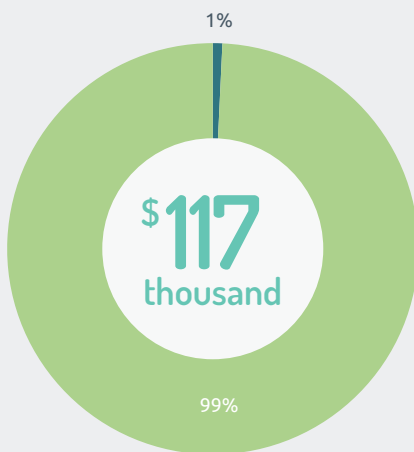
- imports to Australia from the Marshall Islands
- exports from Australia to the Marshall Islands



Sources: Department of Foreign Affairs and Trade – scholarships (2016), volunteers (2015-16); Australian Bureau of Statistics – trade and investment (2015), resident population by country of birth (Census 2011); Department of Immigration and Border Protection – visitors (2015-16)  
 \*Total Australian Government support comprises Official Development Assistance (aid) and Other Official flows (non-aid), based on OECD Development Assistance Committee guidelines.

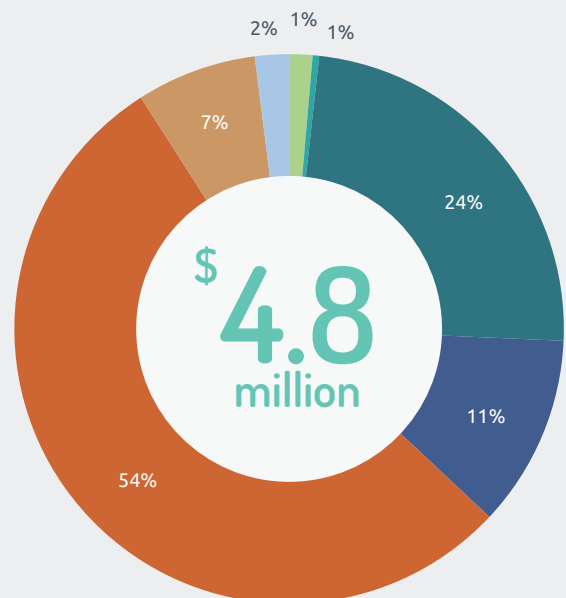
## Australian Government Expenditure (non-aid) 2015-16

- Security policy engagement
- Wildlife and marine resource protection



## Australian Aid to the Marshall Islands, by Investment Priorities 2015-16

- Agriculture
- Building resilience
- Education
- Effective governance
- General development support
- Health
- Infrastructure and trade



## CONNECTING PEOPLE



AUSTRALIAN SHARE OF TOTAL OFFICIAL DEVELOPMENT ASSISTANCE TO THE MARSHALL ISLANDS - 5.0%  
 AUSTRALIAN AID COMPARED TO THE MARSHALL ISLANDS' ECONOMY - 1.3% OF GNI

Further information: *Australian Engagement with Developing Countries: Part 2: Official Sector Statistical Summary 2015-16.*



# AUSTRALIA AND NAURU



## TOTAL AUSTRALIAN GOVERNMENT SUPPORT\* (2015-16)



## TWO-WAY GOODS AND SERVICES TRADE (2015)

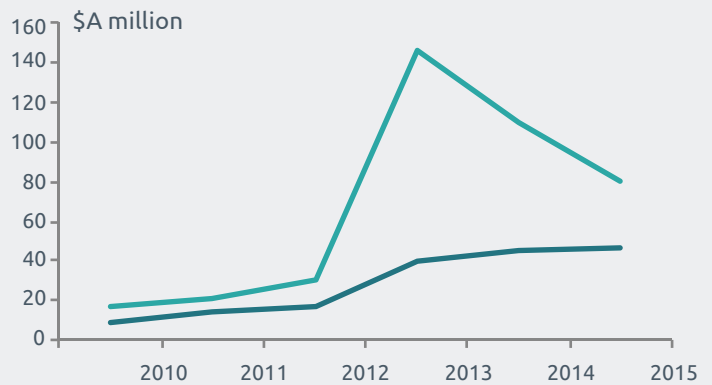
**\$127 MILLION**

## SEASONAL WORKERS FROM NAURU

**17**

## TWO-WAY TRADE

- imports to Australia from Nauru
- exports from Australia to Nauru



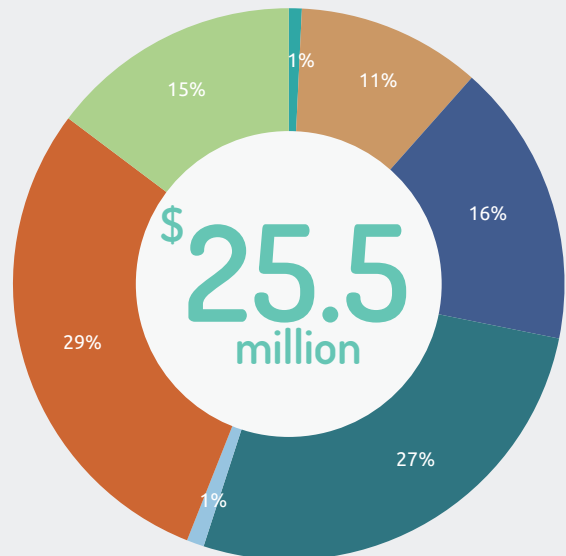
Sources: Department of Foreign Affairs and Trade – scholarships (2016), Department of Education – international students (2015); Australian Bureau of Statistics – trade and investment (2015), resident population by country of birth (Census 2011); Department of Immigration and Border Protection – seasonal workers (2015-16)  
 \*Total Australian Government support comprises Official Development Assistance (aid) and Other Official flows (non-aid), based on OECD Development Assistance Committee guidelines.



## CONNECTING PEOPLE

	Nauruan students in Australia	14
	Nauruan recipients of Australia Awards	13
	Resident Australian population born in Nauru	620

## Australian Aid to Nauru, by Investment Priorities 2015-16



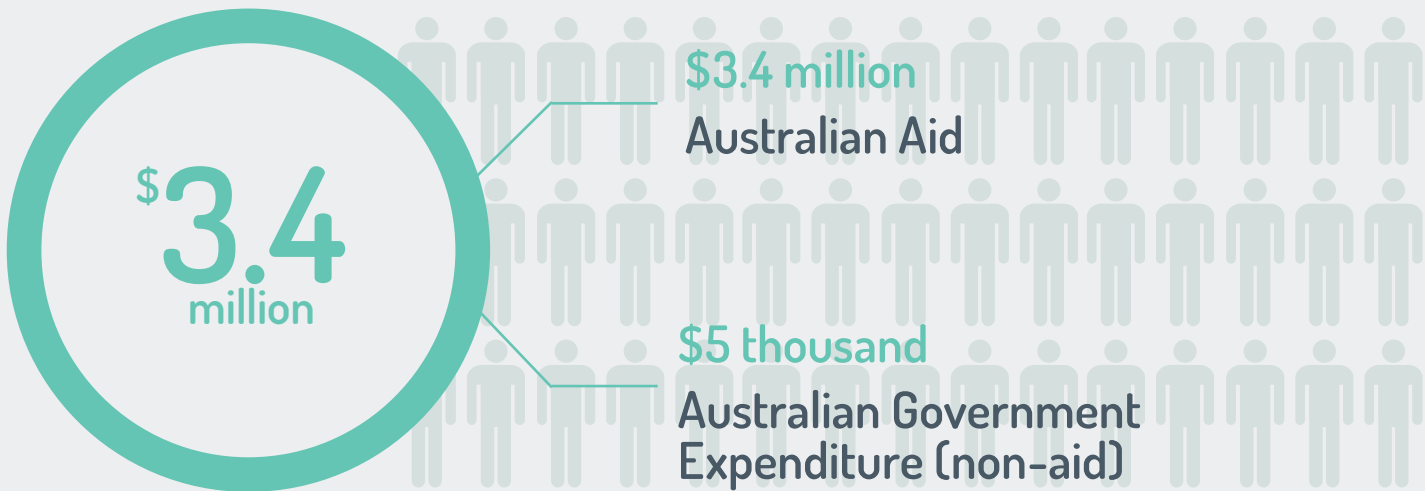
AUSTRALIAN SHARE OF TOTAL OFFICIAL DEVELOPMENT ASSISTANCE TO NAURU - 70.1%

Further information: *Australian Engagement with Developing Countries: Part 2: Official Sector Statistical Summary 2015-16.*



# AUSTRALIA AND NIUE AND TOKELAU

TOTAL AUSTRALIAN GOVERNMENT SUPPORT\* (2015-16)

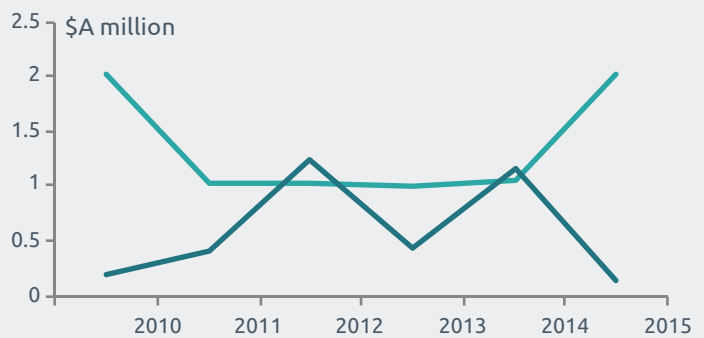


TWO-WAY GOODS AND SERVICES TRADE (2015)

**\$2** MILLION

## TWO-WAY TRADE

- imports to Australia from Niue and Tokelau
- exports from Australia to Niue and Tokelau



Sources: Australian Bureau of Statistics – trade and investment (2015), resident population by country of birth (Census 2011); Department of Immigration and Border Protection – visitors (2015-16)  
 \*Total Australian Government support comprises Official Development Assistance (aid) and Other Official flows (non-aid), based on OECD Development Assistance Committee guidelines.

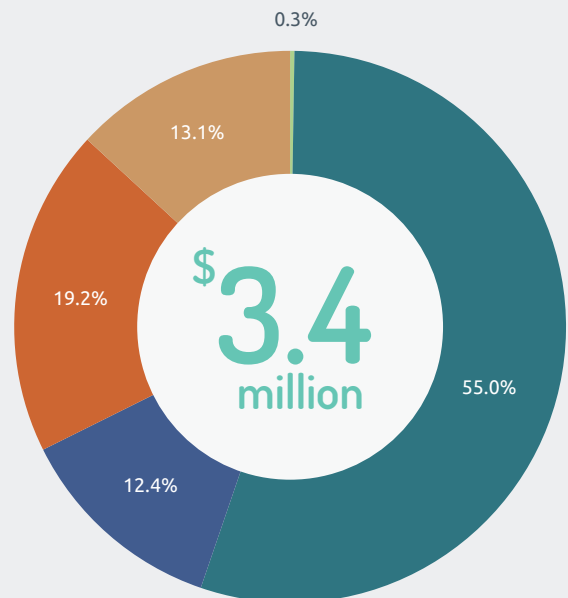
## Australian Government Expenditure (non-aid) 2015-16

■ Art and culture collaboration



## Australian Aid to Niue and Tokelau, by Investment Priorities 2015-16

■ Building resilience  
 ■ Education  
 ■ Effective governance  
 ■ Health  
 ■ Infrastructure and trade



## CONNECTING PEOPLE



AUSTRALIAN SHARE OF TOTAL OFFICIAL DEVELOPMENT ASSISTANCE TO NIUE AND TOKELAU - 8.3%

Further information: *Australian Engagement with Developing Countries: Part 2: Official Sector Statistical Summary 2015-16.*



# AUSTRALIA AND PALAU

## TOTAL AUSTRALIAN GOVERNMENT SUPPORT\* (2015-16)



## TWO-WAY GOODS AND SERVICES TRADE (2015)

**\$6 MILLION**

### TWO-WAY TRADE

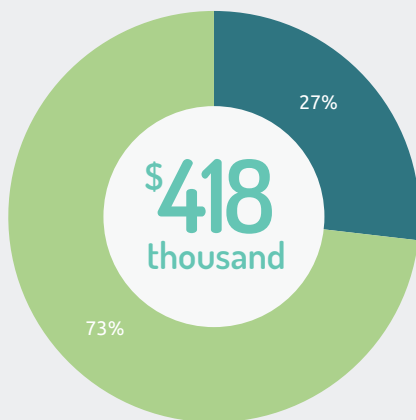
- imports to Australia from Palau
- exports from Australia to Palau



Sources: Department of Foreign Affairs and Trade – scholarships (2016), volunteers (2015-16); Australian Bureau of Statistics – trade and investment (2015), resident population by country of birth (Census 2011); Department of Immigration and Border Protection – visitors (2015-16)  
 \*Total Australian Government support comprises Official Development Assistance (aid) and Other Official flows (non-aid), based on OECD Development Assistance Committee guidelines.

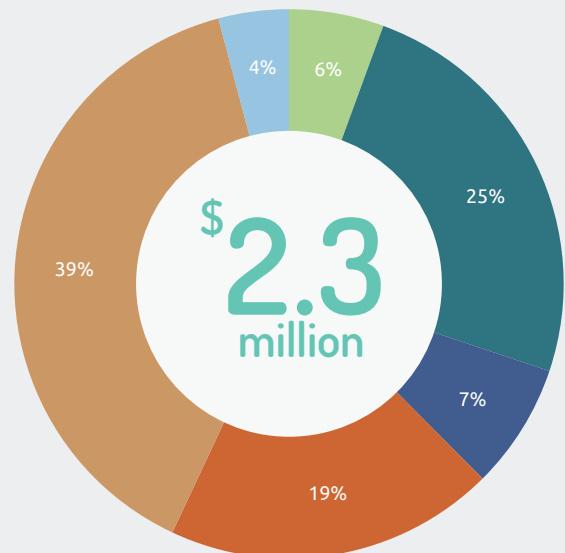
## Australian Government Expenditure (non-aid) 2015-16

- Security policy engagement
- Wildlife and marine resource protection



## Australian Aid to Palau, by Investment Priorities 2015-16

- Building resilience
- Education
- Effective governance
- General development support
- Health
- Infrastructure and trade



## CONNECTING PEOPLE



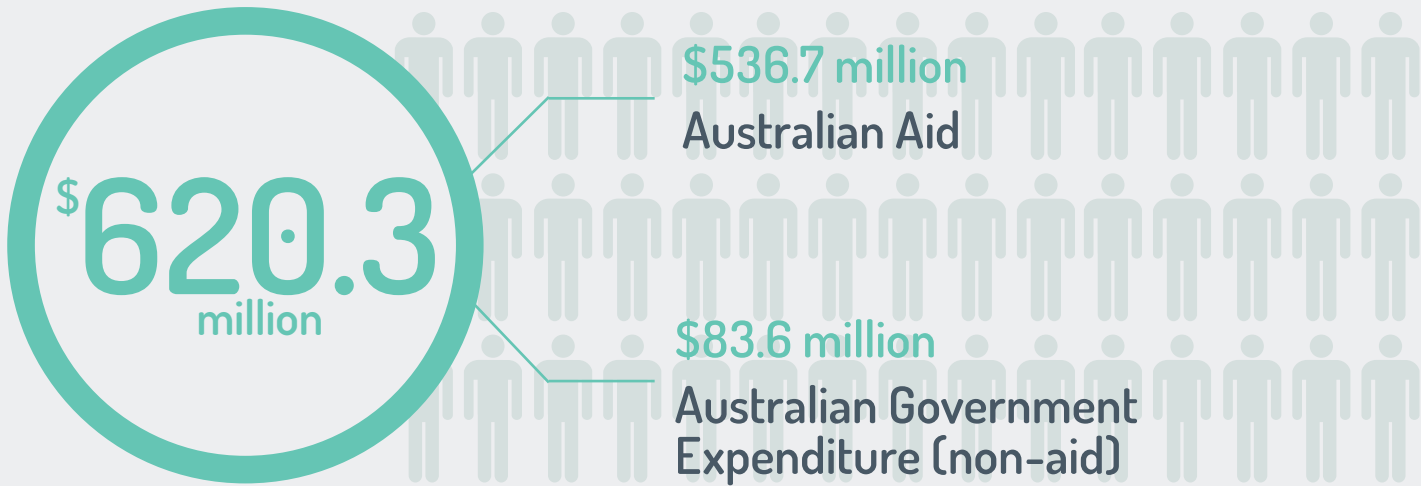
AUSTRALIAN SHARE OF TOTAL OFFICIAL DEVELOPMENT ASSISTANCE TO PALAU - 14%  
 AUSTRALIAN AID COMPARED TO PALAU'S ECONOMY - 1.5% OF GNI

Further information: *Australian Engagement with Developing Countries: Part 2: Official Sector Statistical Summary 2015-16.*



# AUSTRALIA AND PAPUA NEW GUINEA

## TOTAL AUSTRALIAN GOVERNMENT SUPPORT\* (2015-16)



TWO-WAY GOODS AND SERVICES TRADE (2015)

**\$5.7 BILLION**

AUSTRALIAN INVESTMENT (2015)

**\$18.4 BILLION**

SEASONAL WORKERS FROM PAPUA NEW GUINEA

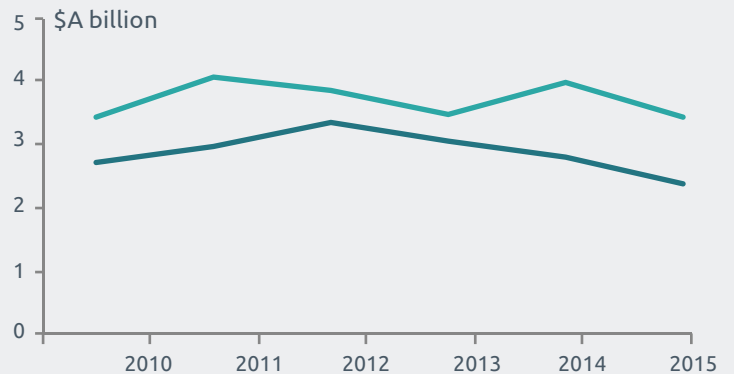
**42**

MIGRANT REMITTANCES FROM AUSTRALIA TO PAPUA NEW GUINEA

**US \$8 MILLION**

## TWO-WAY TRADE

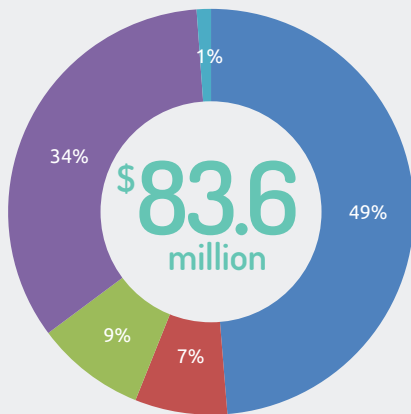
- imports to Australia from Papua New Guinea
- exports from Australia to Papua New Guinea



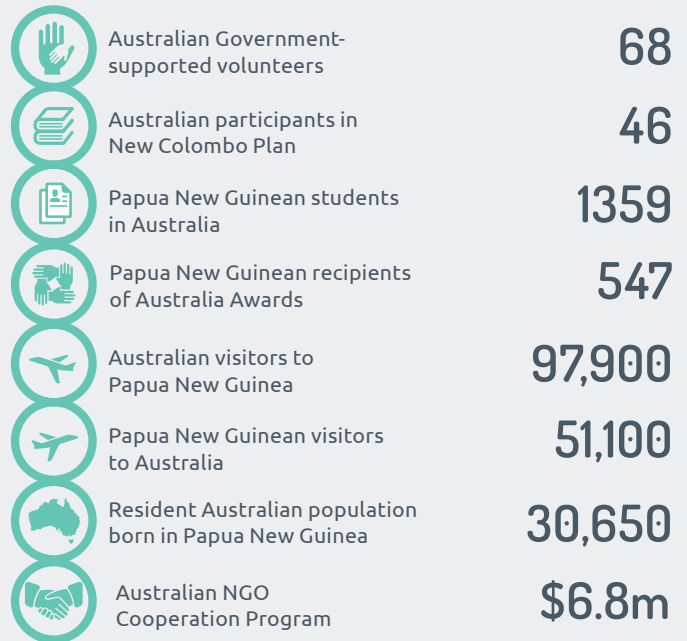
Sources: Department of Foreign Affairs and Trade – scholarships (2016), volunteers (2015-16); New Colombo Plan (2016); Department of Education – international students (2015); Australian Bureau of Statistics – trade and investment (2015), resident population by country of birth (Census 2011); Department of Immigration and Border Protection – visitors, seasonal workers (2015-16); World Bank – remittances (2015)

\*Total Australian Government support comprises Official Development Assistance (aid) and Other Official flows (non-aid), based on OECD Development Assistance Committee guidelines.

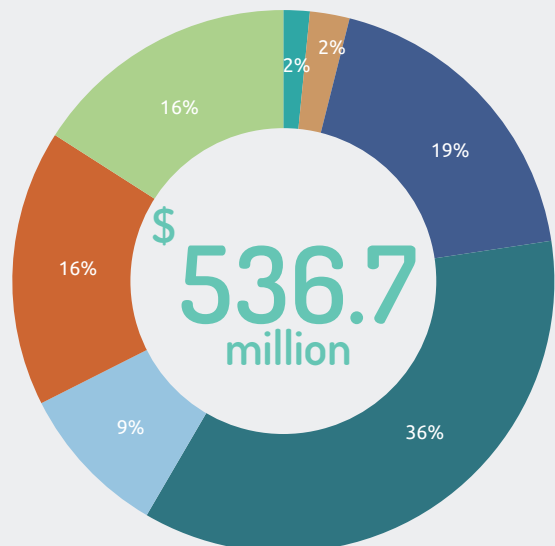
## Australian Government Expenditure (non-aid) 2015-16



## CONNECTING PEOPLE



## Australian Aid to Papua New Guinea, by Investment Priorities 2015-16



**AUSTRALIAN SHARE OF TOTAL OFFICIAL DEVELOPMENT ASSISTANCE TO PAPUA NEW GUINEA - 67.8%**  
**AUSTRALIAN AID COMPARED TO PAPUA NEW GUINEA'S ECONOMY - 2.5% OF GNI**

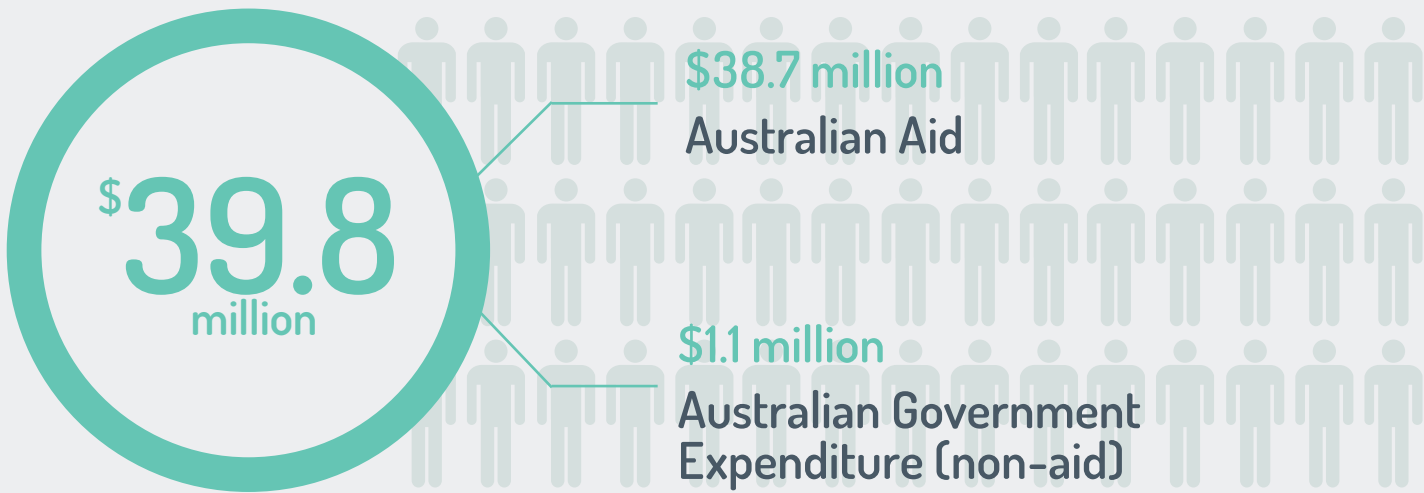
Further information: *Australian Engagement with Developing Countries: Part 2: Official Sector Statistical Summary 2015-16.*



# AUSTRALIA AND SAMOA



## TOTAL AUSTRALIAN GOVERNMENT SUPPORT\* (2015-16)



TWO-WAY GOODS AND SERVICES TRADE (2015)

**\$154 MILLION**

SEASONAL WORKERS FROM SAMOA

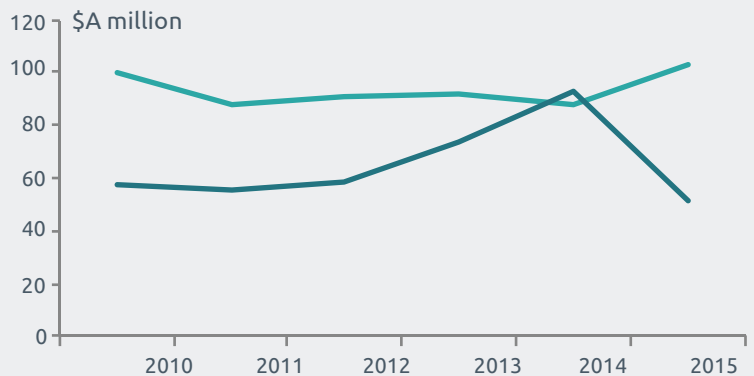
**140**

MIGRANT REMITTANCES FROM AUSTRALIA TO SAMOA

**US \$29 MILLION**

## TWO-WAY TRADE

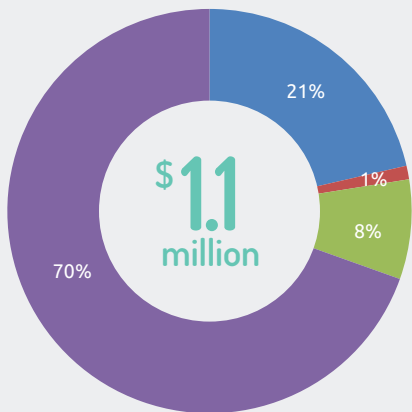
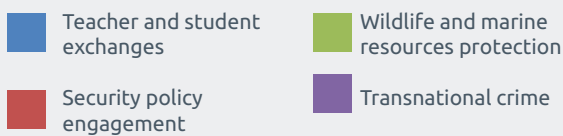
- imports to Australia from Samoa
- exports from Australia to Samoa



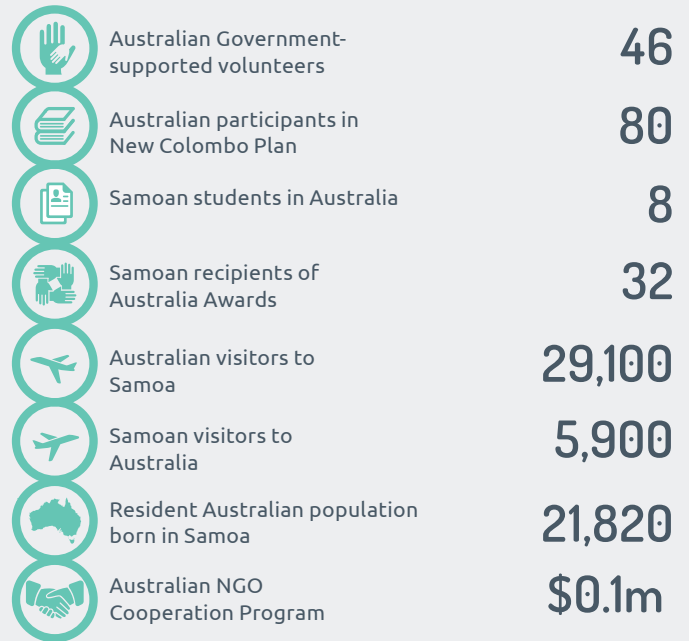
Sources: Department of Foreign Affairs and Trade – scholarships (2016), volunteers (2015-16); New Colombo Plan (2016); Department of Education – international students (2015); Australian Bureau of Statistics – trade and investment (2015), resident population by country of birth (Census 2011); Department of Immigration and Border Protection – visitors, seasonal workers (2015-16); World Bank – remittances (2015)

\*Total Australian Government support comprises Official Development Assistance (aid) and Other Official flows (non-aid), based on OECD Development Assistance Committee guidelines.

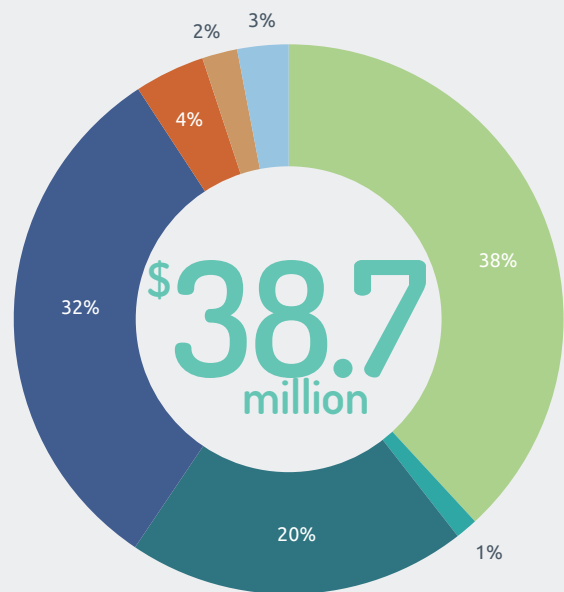
## Australian Government Expenditure (non-aid) 2015-16



## CONNECTING PEOPLE



## Australian Aid to Samoa, by Investment Priorities 2015-16



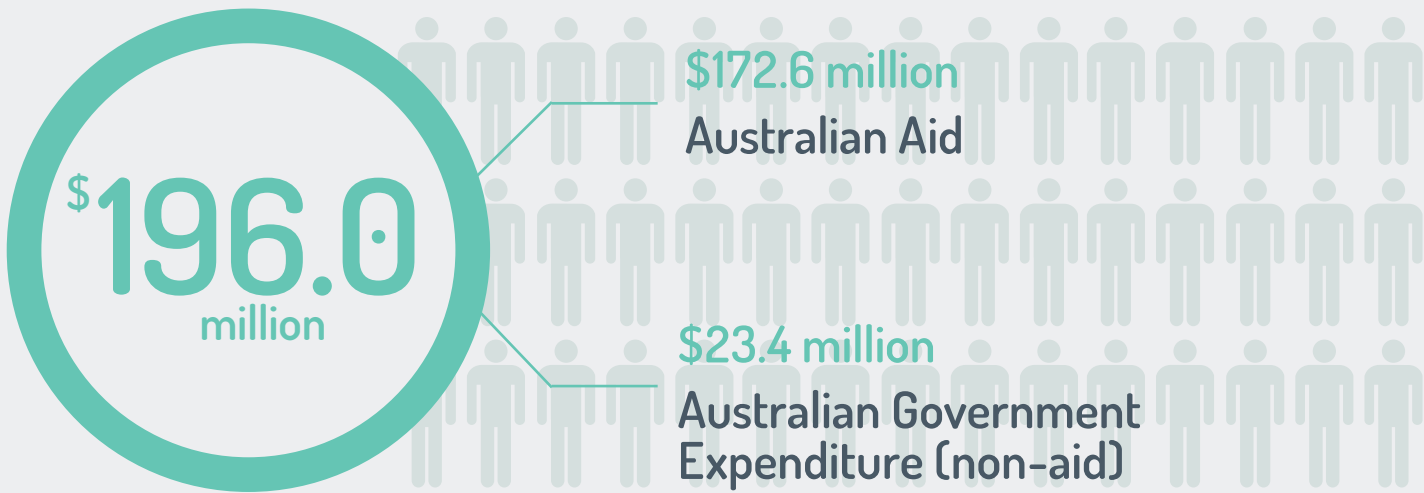
AUSTRALIAN SHARE OF TOTAL OFFICIAL DEVELOPMENT ASSISTANCE TO SAMOA - 27%  
 AUSTRALIAN AID COMPARED TO SAMOA'S ECONOMY - 3.5% OF GNI

Further information: *Australian Engagement with Developing Countries: Part 2: Official Sector Statistical Summary 2015-16.*



# AUSTRALIA AND SOLOMON ISLANDS

## TOTAL AUSTRALIAN GOVERNMENT SUPPORT\* (2015-16)



TWO-WAY GOODS AND SERVICES TRADE (2015)

**\$398 MILLION**

AUSTRALIAN INVESTMENT (2015)

**\$24 MILLION**

SOLOMON ISLANDS INVESTMENT (2015)

**\$297 MILLION**

SEASONAL WORKERS FROM SOLOMON ISLANDS

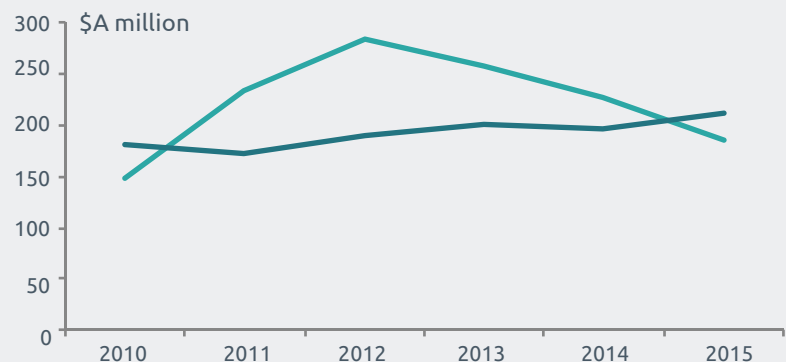
**61**

MIGRANT REMITTANCES FROM AUSTRALIA TO SOLOMON ISLANDS

**US \$14 MILLION**

## TWO-WAY TRADE

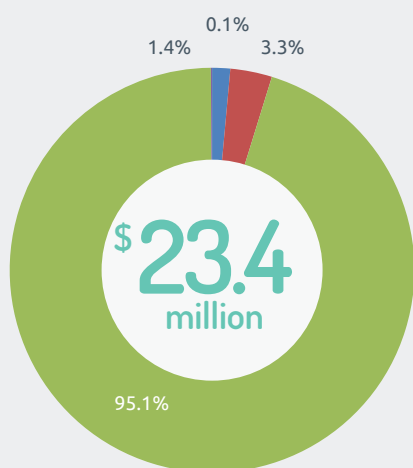
- imports to Australia from Solomon Islands
- exports from Australia to Solomon Islands



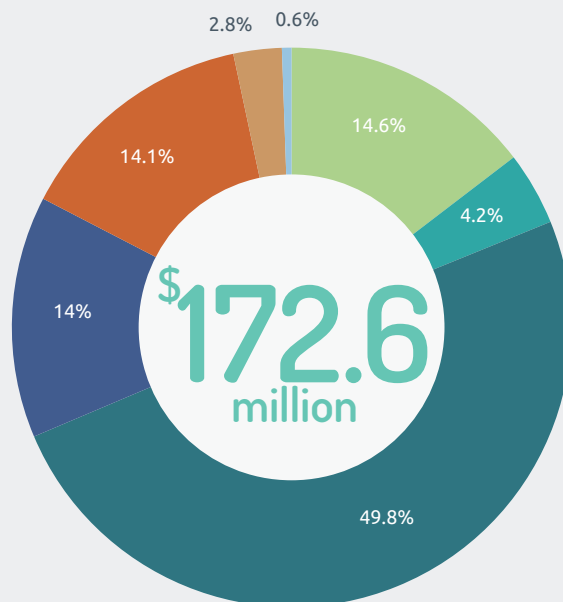
Sources: Department of Foreign Affairs and Trade – scholarships (2016), volunteers (2015-16); New Colombo Plan (2016); Department of Education – international students (2015); Australian Bureau of Statistics – trade and investment (2015), resident population by country of birth (Census 2011); Department of Immigration and Border Protection – visitors, seasonal workers (2015-16); World Bank – remittances (2015)

\*Total Australian Government support comprises Official Development Assistance (aid) and Other Official flows (non-aid), based on OECD Development Assistance Committee guidelines.

## Australian Government Expenditure (non-aid) 2015-16



## Australian Aid to Solomon Islands, by Investment Priorities 2015-16



**AUSTRALIAN SHARE OF TOTAL OFFICIAL DEVELOPMENT ASSISTANCE TO SOLOMON ISLANDS - 67.8%**  
**AUSTRALIAN AID COMPARED TO SOLOMON ISLANDS' ECONOMY - 13.3% OF GNI**

Further information: *Australian Engagement with Developing Countries: Part 2: Official Sector Statistical Summary 2015-16.*

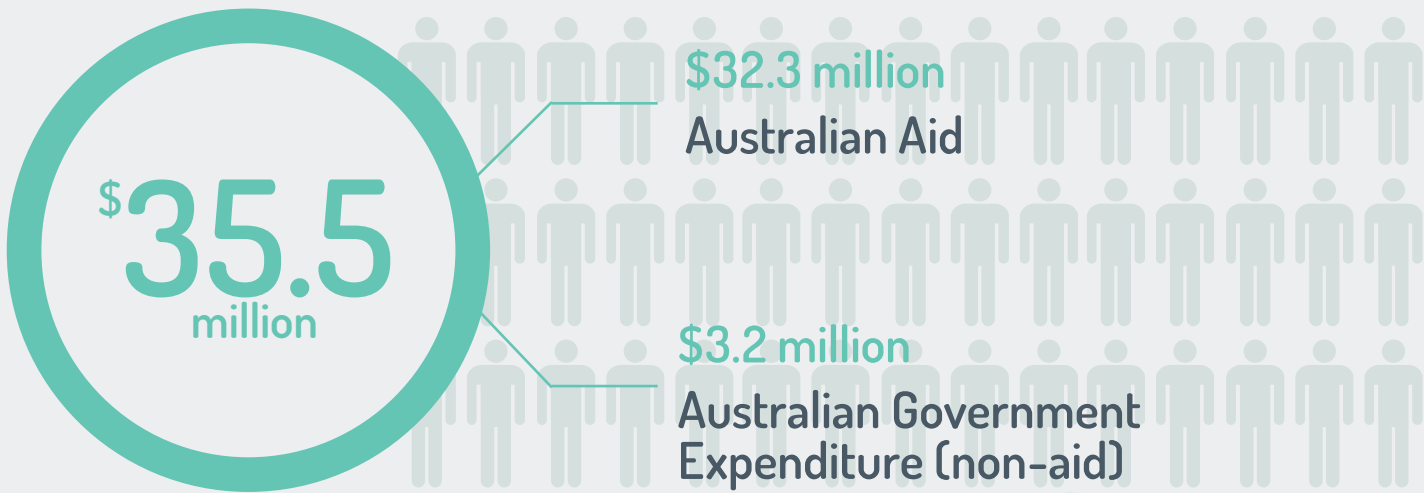
## CONNECTING PEOPLE





# AUSTRALIA AND TONGA

## TOTAL AUSTRALIAN GOVERNMENT SUPPORT\* (2015-16)



TWO-WAY GOODS AND SERVICES TRADE (2015)

**\$73** MILLION

AUSTRALIAN INVESTMENT (2015)

**\$2** MILLION

SEASONAL WORKERS FROM TONGA

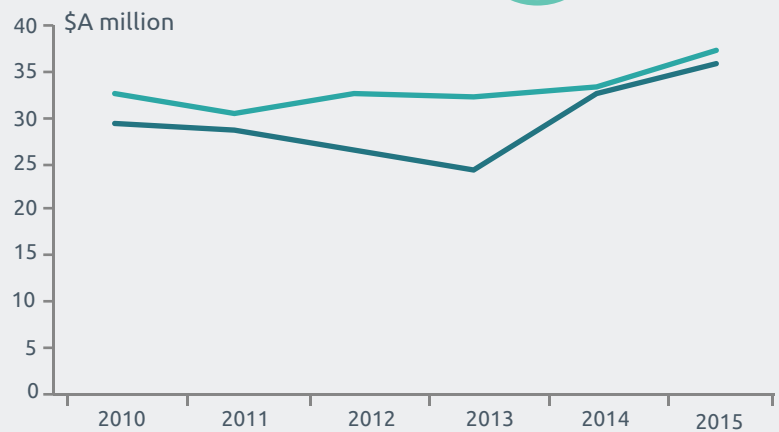
**2,624**

MIGRANT REMITTANCES FROM AUSTRALIA TO TONGA

**US \$22** MILLION

## TWO-WAY TRADE

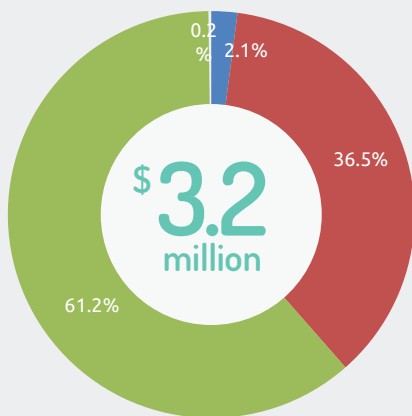
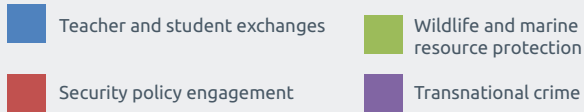
- imports to Australia from Tonga
- exports from Australia to Tonga



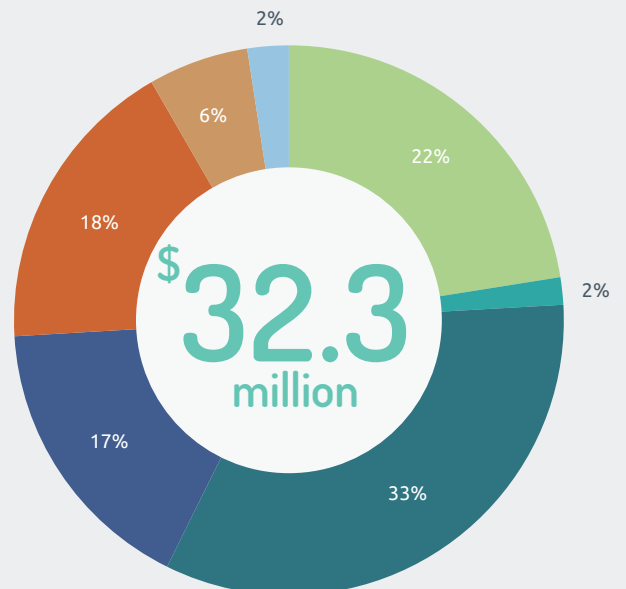
Sources: Department of Foreign Affairs and Trade – scholarships (2016), volunteers (2015-16); New Colombo Plan (2016); Department of Education – international students (2015); Australian Bureau of Statistics – trade and investment (2015), resident population by country of birth (Census 2011); Department of Immigration and Border Protection – visitors, seasonal workers (2015-16); World Bank – remittances (2015)

\*Total Australian Government support comprises Official Development Assistance (aid) and Other Official flows (non-aid), based on OECD Development Assistance Committee guidelines.

## Australian Government Expenditure (non-aid) 2015-16

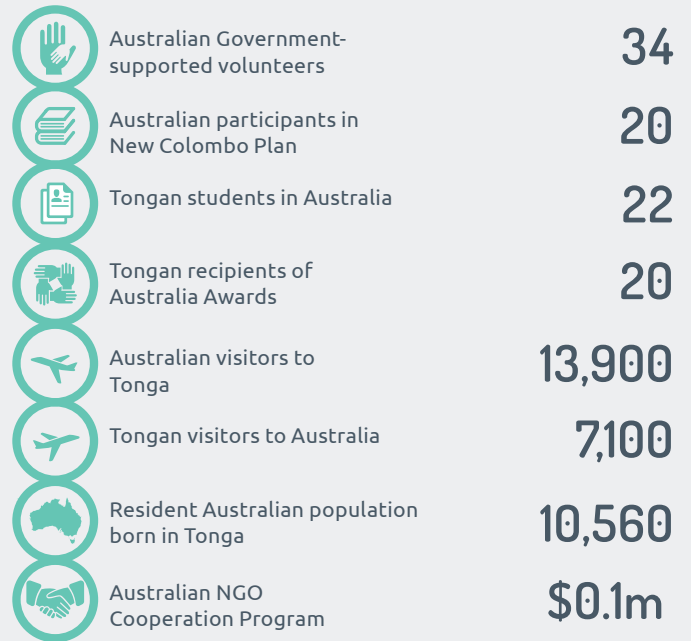


## Australian Aid to Tonga, by Investment Priorities 2015-16



AUSTRALIAN SHARE OF TOTAL OFFICIAL DEVELOPMENT ASSISTANCE TO TONGA - 27.9%  
 AUSTRALIAN AID COMPARED TO TONGA'S ECONOMY - 5.1% OF GNI

## CONNECTING PEOPLE

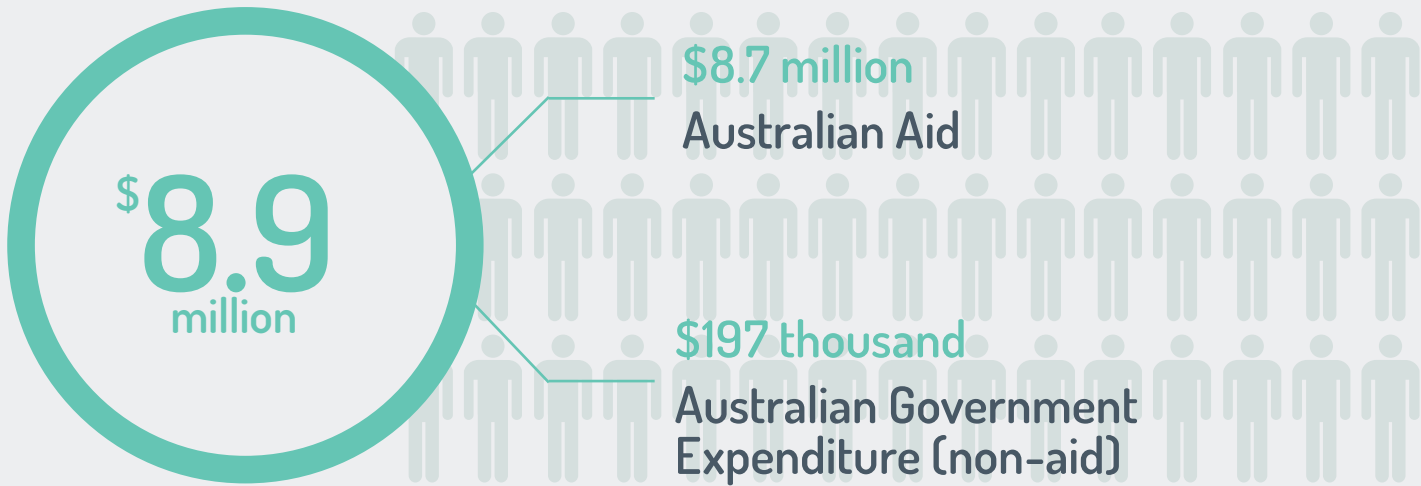


Further information: *Australian Engagement with Developing Countries: Part 2: Official Sector Statistical Summary 2015-16.*



# AUSTRALIA AND TUVALU

## TOTAL AUSTRALIAN GOVERNMENT SUPPORT\* (2015-16)



## TWO-WAY GOODS AND SERVICES TRADE (2015)

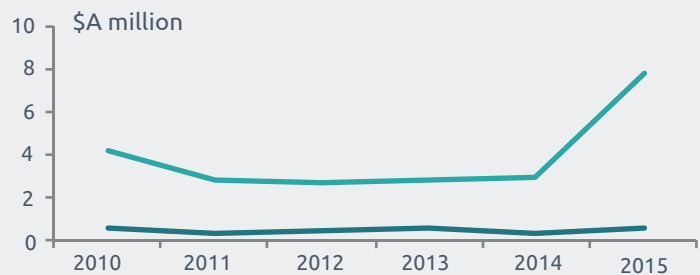
**\$8 MILLION**

## SEASONAL WORKERS FROM TUVALU

**< 5**

## TWO-WAY TRADE

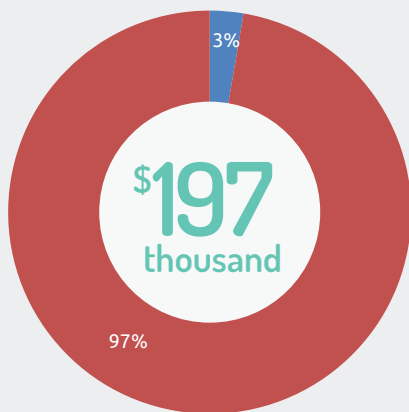
- imports to Australia from Tuvalu
- exports from Australia to Tuvalu



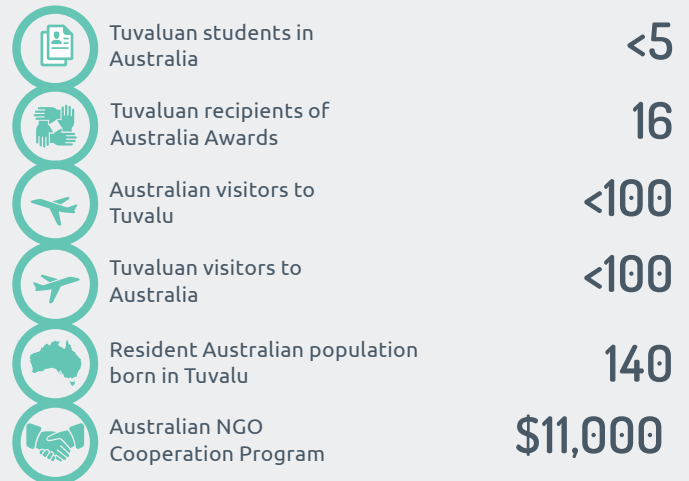
Sources: Department of Foreign Affairs and Trade – scholarships (2016); Department of Education – international students (2015); Australian Bureau of Statistics – trade and investment (2015), resident population by country of birth (Census 2011); Department of Immigration and Border Protection – visitors, seasonal workers (2015-16)  
 \*Total Australian Government support comprises Official Development Assistance (aid) and Other Official flows (non-aid), based on OECD Development Assistance Committee guidelines.

## Australian Government Expenditure (non-aid) 2015-16

- Security policy engagement
- Wildlife and marine resource protection

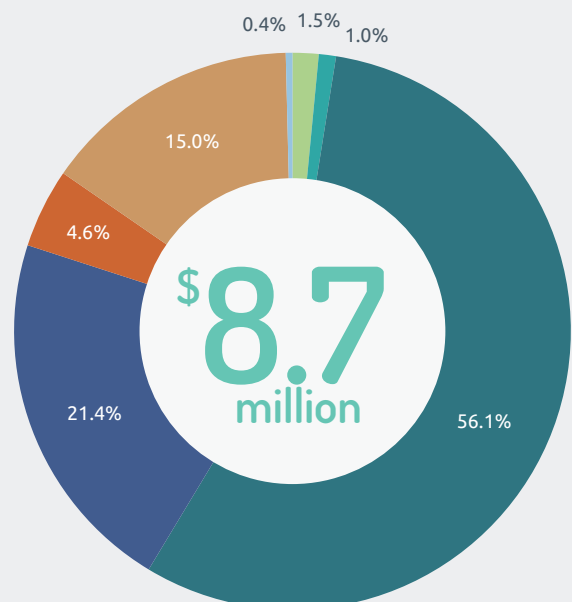


## CONNECTING PEOPLE



## Australian Aid to Tuvalu, by Investment Priorities 2015-16

- Agriculture
- Building resilience
- Education
- Effective governance
- General development support
- Health
- Infrastructure and trade



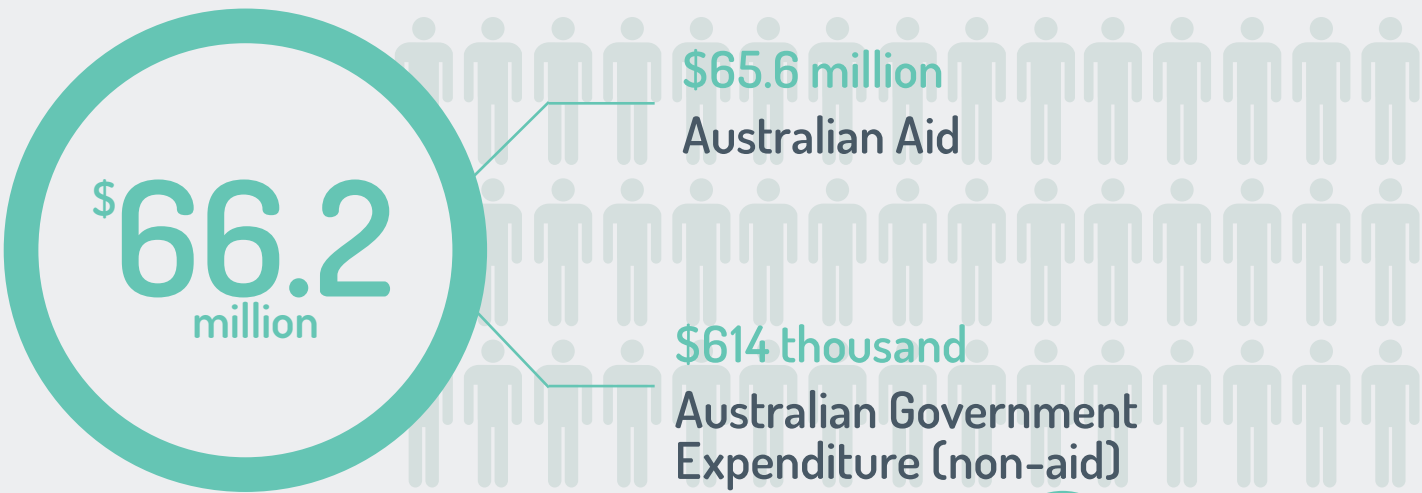
AUSTRALIAN SHARE OF TOTAL OFFICIAL DEVELOPMENT ASSISTANCE TO TUVALU - 20.7%  
 AUSTRALIAN AID COMPARED TO TUVALU'S ECONOMY - 12.7% OF GNI

Further information: *Australian Engagement with Developing Countries: Part 2: Official Sector Statistical Summary 2015-16.*



# AUSTRALIA AND VANUATU

## TOTAL AUSTRALIAN GOVERNMENT SUPPORT\* (2015-16)



TWO-WAY GOODS AND SERVICES TRADE (2015)

**\$254 MILLION**

AUSTRALIAN INVESTMENT (2015)

**\$112 MILLION**

VANUATU'S INVESTMENT (2015)

**\$120 MILLION**

SEASONAL WORKERS FROM VANUATU

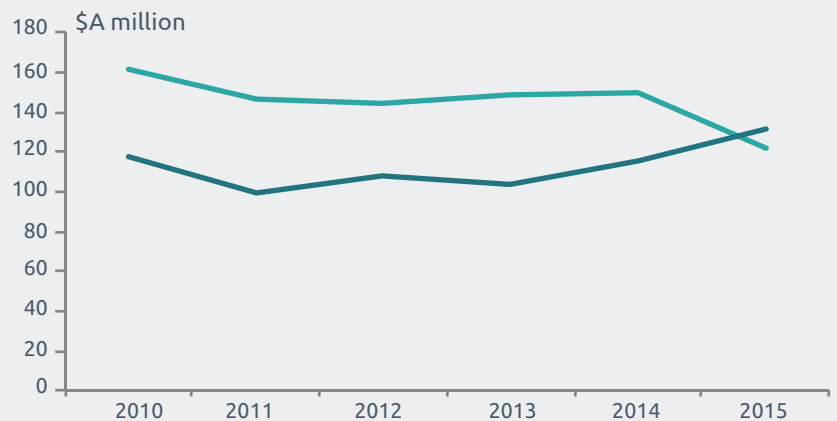
**1,198**

MIGRANT REMITTANCES FROM AUSTRALIA TO VANUATU

**US \$5 MILLION**

## TWO-WAY TRADE

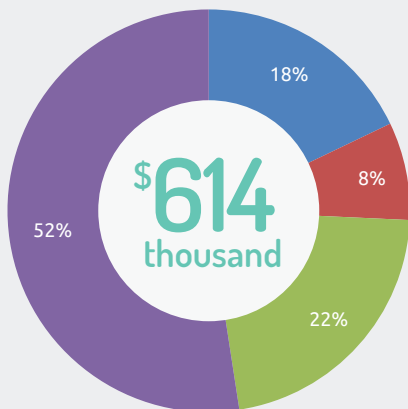
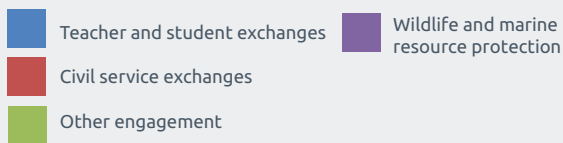
- imports to Australia from Vanuatu
- exports from Australia to Vanuatu



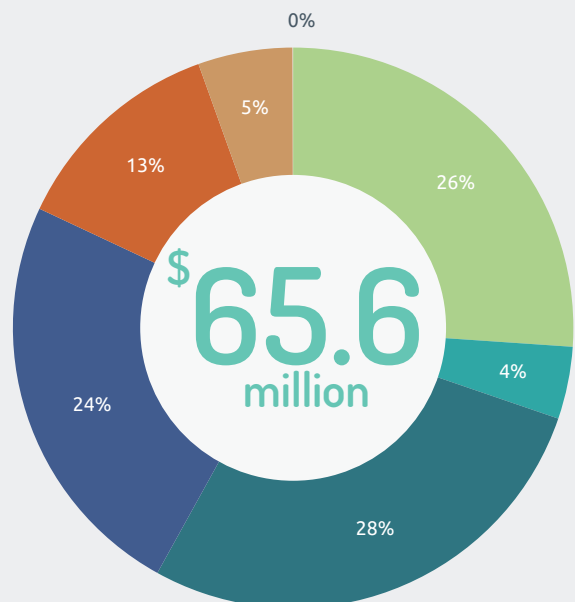
Sources: Department of Foreign Affairs and Trade – scholarships (2016), volunteers (2015-16); New Colombo Plan (2016); Visitors (DFAT estimate 2015-2016); Department of Education – international students (2015); Australian Bureau of Statistics – trade and investment (2015), resident population by country of birth (Census 2011); Department of Immigration and Border Protection – seasonal workers (2015-16); World Bank – remittances (2015)

\*Total Australian Government support comprises Official Development Assistance (aid) and Other Official flows (non-aid), based on OECD Development Assistance Committee guidelines.

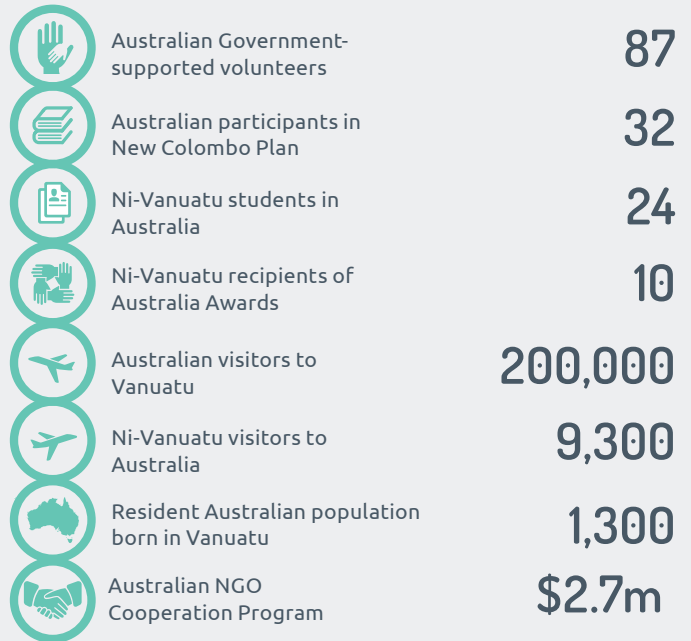
## Australian Government Expenditure (non-aid) 2015-16



## Australian Aid to Vanuatu, by Investment Priorities 2015-16



## CONNECTING PEOPLE



AUSTRALIAN SHARE OF TOTAL OFFICIAL DEVELOPMENT ASSISTANCE TO VANUATU - 54.2%  
 AUSTRALIAN AID COMPARED TO VANUATU'S ECONOMY - 6.7% OF GNI

Further information: *Australian Engagement with Developing Countries: Part 2: Official Sector Statistical Summary 2015-16.*



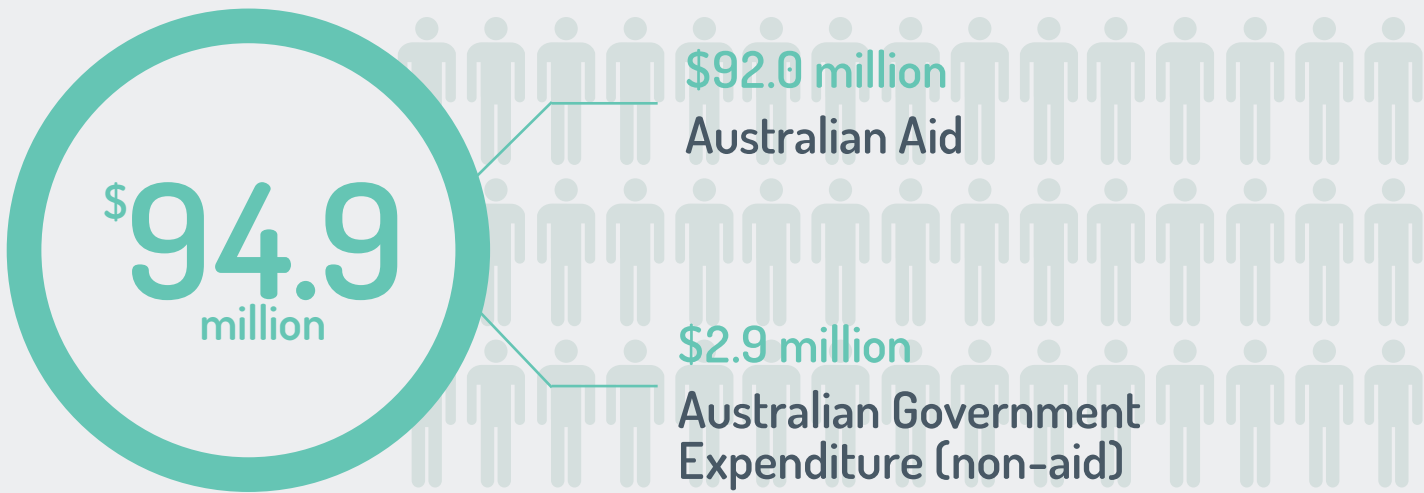
# SOUTH EAST and EAST ASIA





# AUSTRALIA AND CAMBODIA

## TOTAL AUSTRALIAN GOVERNMENT SUPPORT\* (2015-16)



TWO-WAY GOODS AND SERVICES TRADE (2015)

**\$451 MILLION**

CAMBODIA'S INVESTMENT (2015)

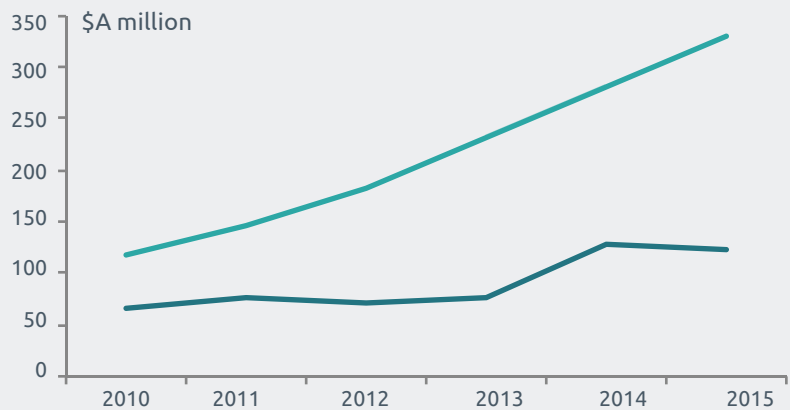
**\$856 MILLION**

MIGRANT REMITTANCES FROM AUSTRALIA TO CAMBODIA

**US \$15 MILLION**

## TWO-WAY TRADE

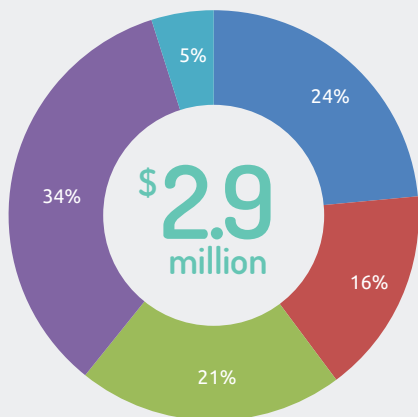
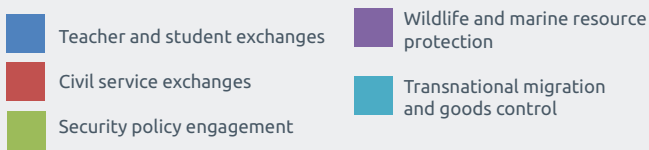
- imports to Australia from Cambodia
- exports from Australia to Cambodia



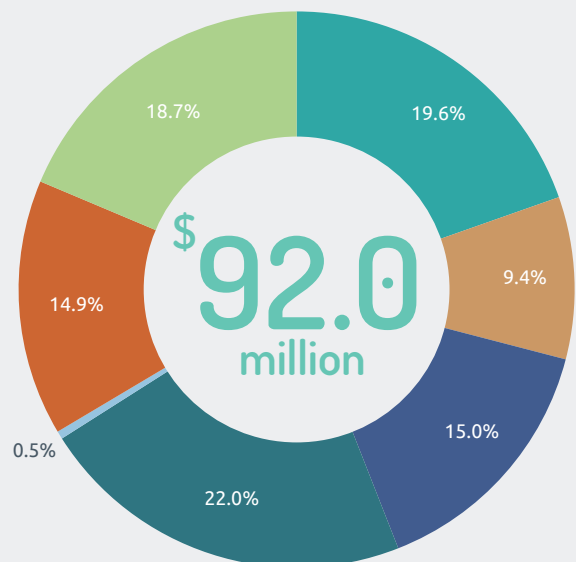
Sources: Department of Foreign Affairs and Trade – scholarships (2016), volunteers (2015-16); New Colombo Plan (2016); Department of Education – international students (2015); Australian Bureau of Statistics – trade and investment (2015), resident population by country of birth (Census 2011); Department of Immigration and Border Protection – visitors (2015-16); World Bank – remittances (2015)

\*Total Australian Government support comprises Official Development Assistance (aid) and Other Official flows (non-aid), based on OECD Development Assistance Committee guidelines.

## Australian Government Expenditure (non-aid) 2015-16

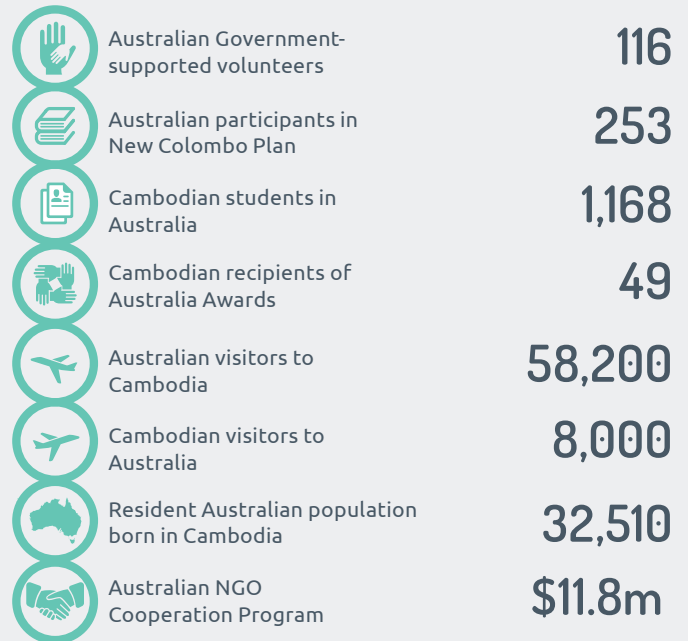


## Australian Aid to Cambodia, by Investment Priorities 2015-16



AUSTRALIAN SHARE OF TOTAL OFFICIAL DEVELOPMENT ASSISTANCE TO CAMBODIA - 9.3%  
 AUSTRALIAN AID COMPARED TO CAMBODIA'S ECONOMY - 0.5% OF GNI

## CONNECTING PEOPLE

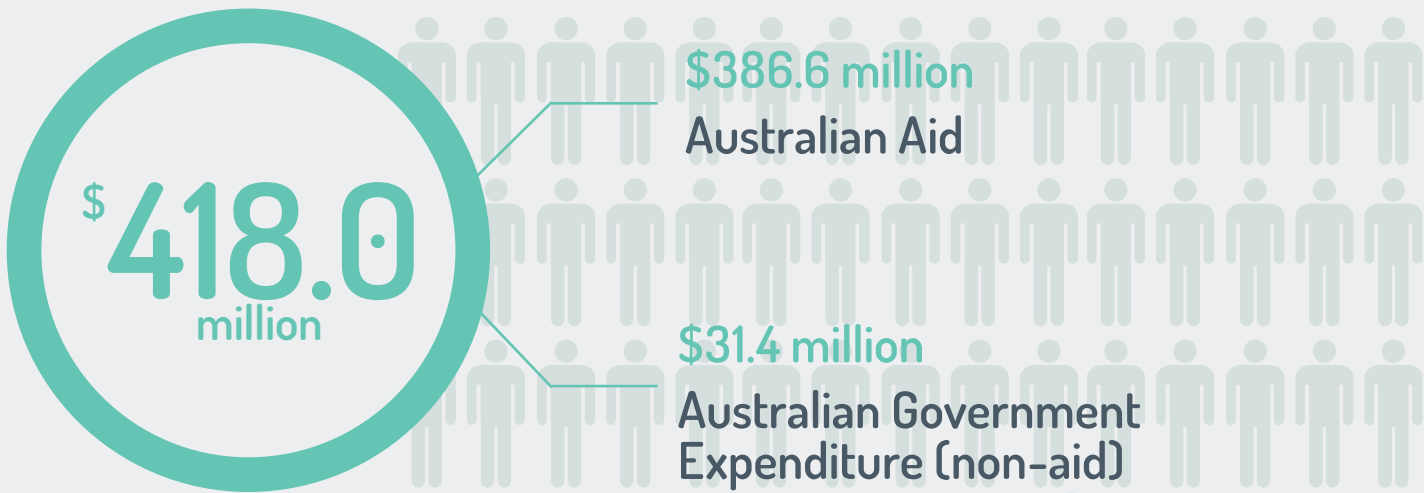


Further information: *Australian Engagement with Developing Countries: Part 2: Official Sector Statistical Summary 2015-16.*



# AUSTRALIA AND INDONESIA

## TOTAL AUSTRALIAN GOVERNMENT SUPPORT\* (2015-16)



TWO-WAY GOODS AND SERVICES TRADE (2015)

**\$15.1 BILLION**

AUSTRALIAN INVESTMENT (2015)

**\$8.4 BILLION**

INDONESIA'S INVESTMENT (2015)

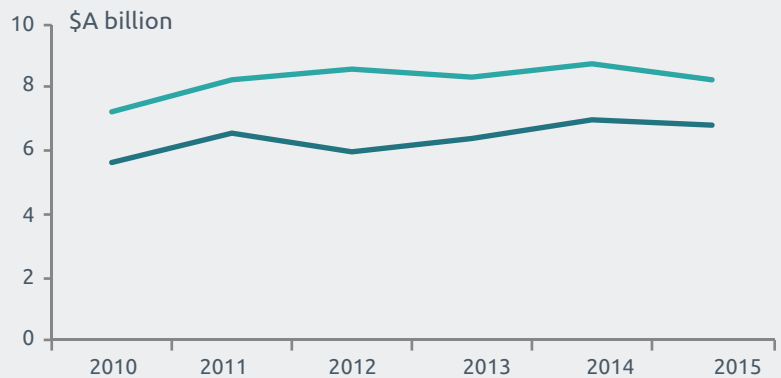
**\$1.4 BILLION**

MIGRANT REMITTANCES FROM AUSTRALIA TO INDONESIA

**US \$184 MILLION**

## TWO-WAY TRADE

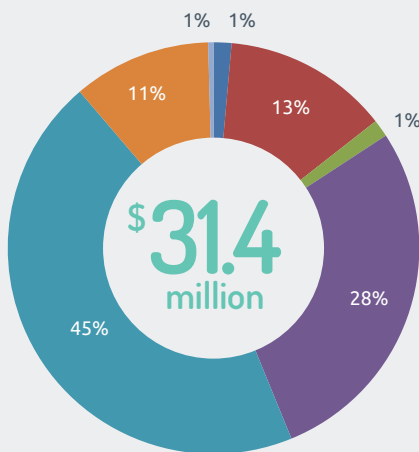
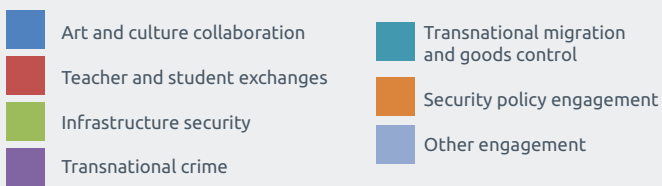
- imports to Australia from Indonesia
- exports from Australia to Indonesia



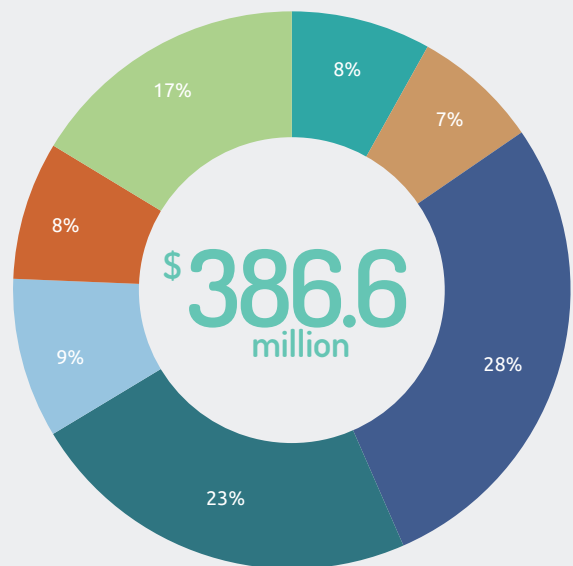
Sources: Department of Foreign Affairs and Trade – scholarships (2016), volunteers (2015-16); New Colombo Plan (2016); Department of Education – international students (2015); Australian Bureau of Statistics – trade and investment (2015), resident population by country of birth (Census 2011); Department of Immigration and Border Protection – visitors (2015-16); World Bank – remittances (2015)

\*Total Australian Government support comprises Official Development Assistance (aid) and Other Official flows (non-aid), based on OECD Development Assistance Committee guidelines.

## Australian Government Expenditure (non-aid) 2015-16



## Australian Aid to Indonesia, by Investment Priorities 2015-16



**AUSTRALIAN SHARE OF TOTAL OFFICIAL DEVELOPMENT ASSISTANCE TO INDONESIA - 21.6%**  
**AUSTRALIAN AID COMPARED TO INDONESIA'S ECONOMY - 0.05% OF GNI**

Further information: *Australian Engagement with Developing Countries: Part 2: Official Sector Statistical Summary 2015-16.*

## CONNECTING PEOPLE

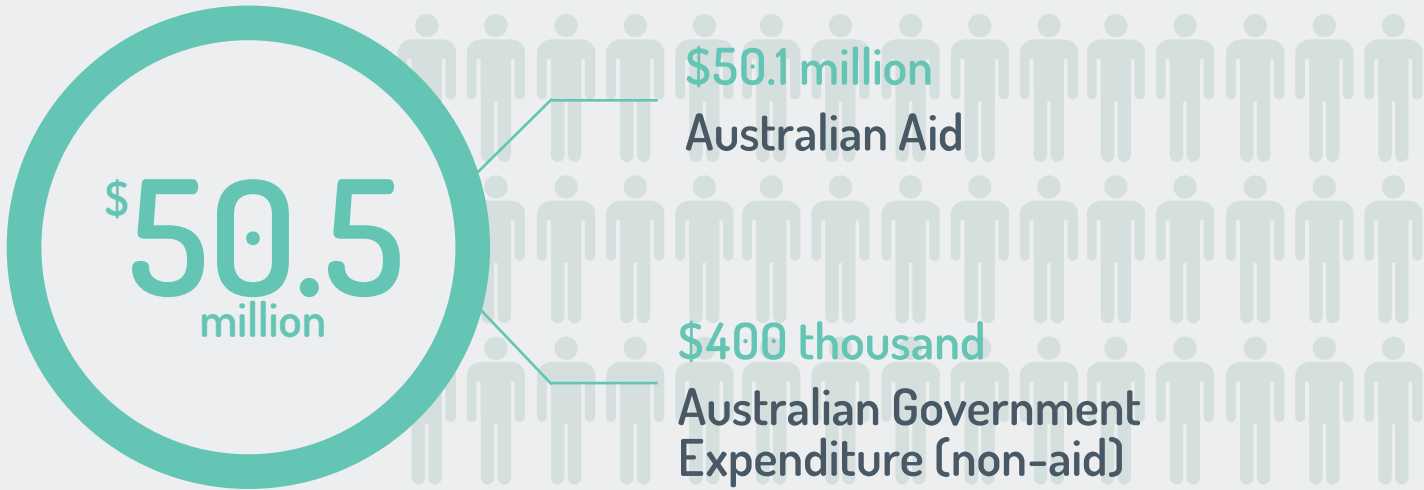




# AUSTRALIA AND LAOS



## TOTAL AUSTRALIAN GOVERNMENT SUPPORT\* (2015-16)



## TWO-WAY GOODS AND SERVICES TRADE (2015)

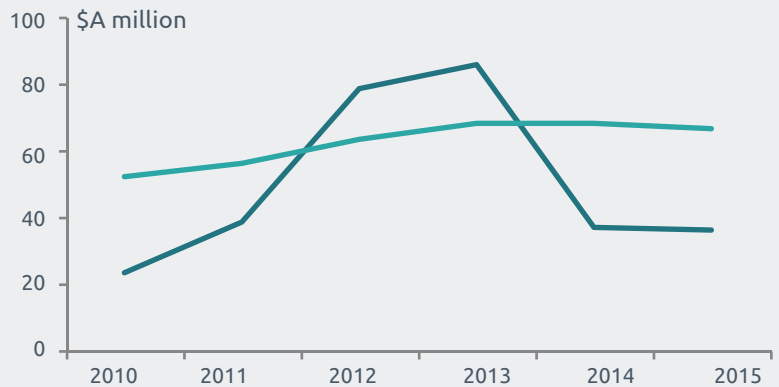
**\$104 MILLION**

## MIGRANT REMITTANCES FROM AUSTRALIA TO LAOS

**US \$1 MILLION**

## TWO-WAY TRADE

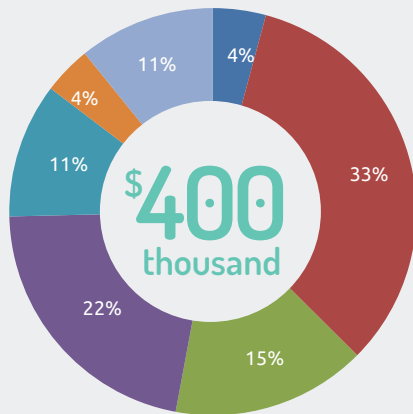
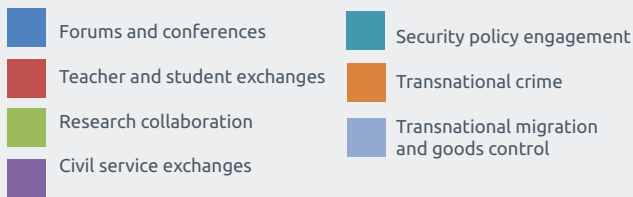
- imports to Australia from Laos
- exports from Australia to Laos



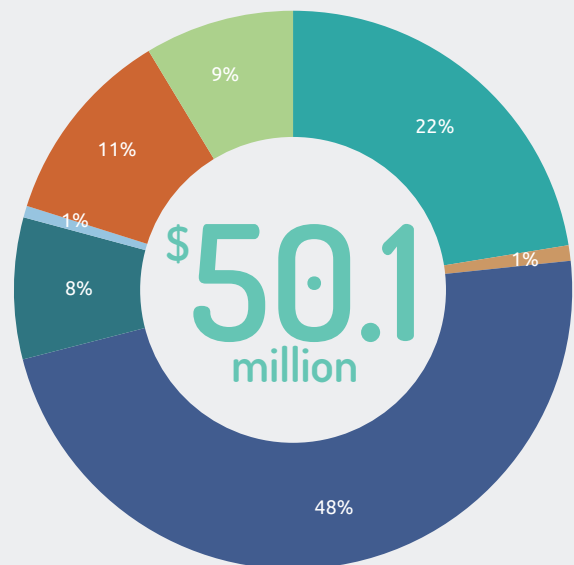
Sources: Department of Foreign Affairs and Trade – scholarships (2016), volunteers (2015-16); New Colombo Plan (2016); Department of Education – international students (2015); Australian Bureau of Statistics – trade and investment (2015), resident population by country of birth (Census 2011); Department of Immigration and Border Protection – visitors (2015-16); World Bank – remittances (2015)

\*Total Australian Government support comprises Official Development Assistance (aid) and Other Official flows (non-aid), based on OECD Development Assistance Committee guidelines.

## Australian Government Expenditure (non-aid) 2015-16



## Australian Aid to Laos, by Investment Priorities 2015-16



## CONNECTING PEOPLE



AUSTRALIAN SHARE OF TOTAL OFFICIAL DEVELOPMENT ASSISTANCE TO LAOS - 10.8%  
 AUSTRALIAN AID COMPARED TO LAOS' ECONOMY - 0.5% OF GNI

Further information: *Australian Engagement with Developing Countries: Part 2: Official Sector Statistical Summary 2015-16.*



# AUSTRALIA AND MONGOLIA

## TOTAL AUSTRALIAN GOVERNMENT SUPPORT\* (2015-16)



## TWO-WAY GOODS AND SERVICES TRADE (2015)

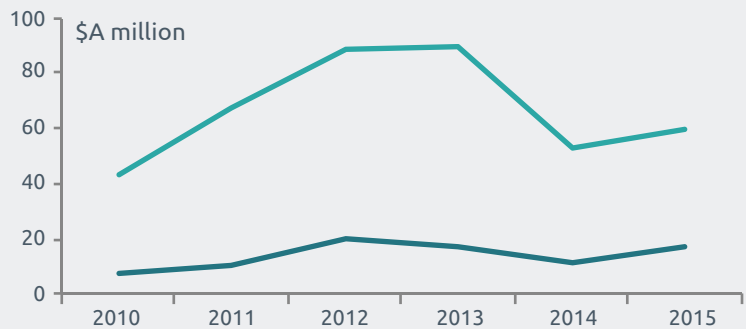
**\$77 MILLION**

## MIGRANT REMITTANCES FROM AUSTRALIA TO MONGOLIA

**US \$3 MILLION**

## TWO-WAY TRADE

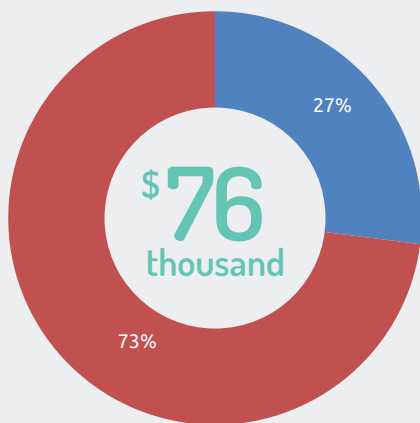
- imports to Australia from Mongolia
- exports from Australia to Mongolia



Sources: Department of Foreign Affairs and Trade – scholarships (2016), volunteers (2015-16); Department of Education – international students (2015); Australian Bureau of Statistics – trade and investment (2015), resident population by country of birth (Census 2011); Department of Immigration and Border Protection – visitors (2015-16); World Bank – remittances (2015)  
 \*Total Australian Government support comprises Official Development Assistance (aid) and Other Official flows (non-aid), based on OECD Development Assistance Committee guidelines.

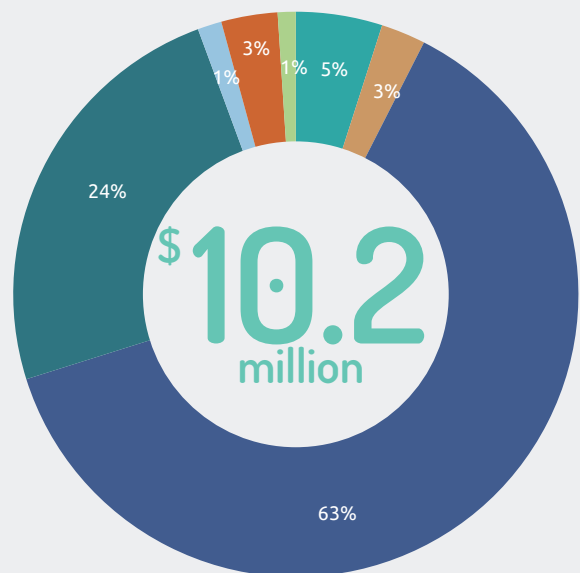
## Australian Government Expenditure (non-aid) 2015-16

- Teacher and student exchanges
- Security policy engagement



## Australian Aid to Mongolia, by Investment Priorities 2015-16

- Agriculture
- Building resilience
- Education
- Effective governance
- General development support
- Health
- Infrastructure and trade



## CONNECTING PEOPLE

- Australian Government-supported volunteers: 44
- Mongolian students in Australia: 1,059
- Mongolian recipients of Australia Awards: 2
- Australian visitors to Mongolia: 3,700
- Mongolian visitors to Australia: 2,800
- Resident Australian population born in Mongolia: 780
- Australian NGO Cooperation Program: \$0.4m

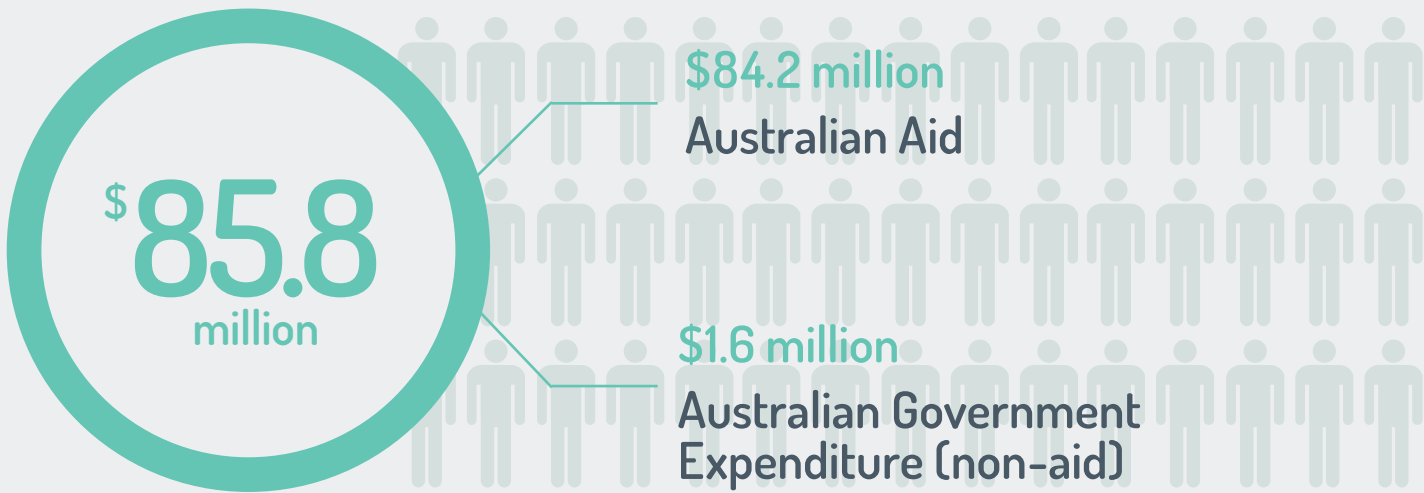
AUSTRALIAN SHARE OF TOTAL OFFICIAL DEVELOPMENT ASSISTANCE TO MONGOLIA - 3.9%  
 AUSTRALIAN AID COMPARED TO MONGOLIA'S ECONOMY - 0.1% OF GNI

Further information: *Australian Engagement with Developing Countries: Part 2: Official Sector Statistical Summary 2015-16.*



# AUSTRALIA AND MYANMAR

## TOTAL AUSTRALIAN GOVERNMENT SUPPORT\* (2015-16)



## TWO-WAY GOODS AND SERVICES TRADE (2015)

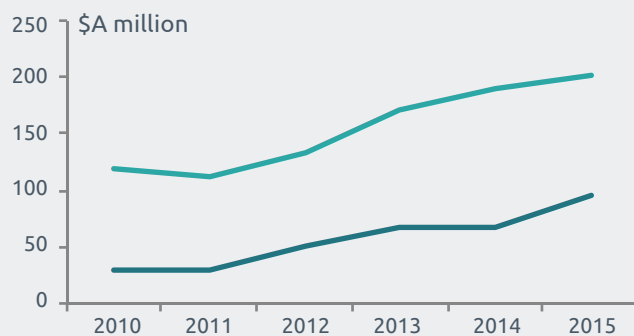
**\$297 MILLION**

## MIGRANT REMITTANCES FROM AUSTRALIA TO MYANMAR

**US \$34 MILLION**

## TWO-WAY TRADE

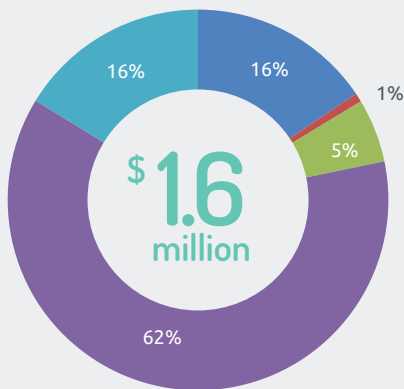
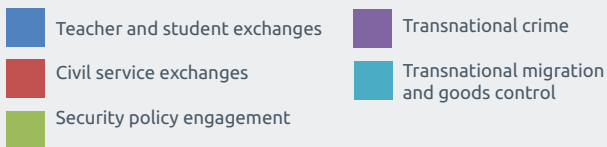
- imports to Australia from Myanmar
- exports from Australia to Myanmar



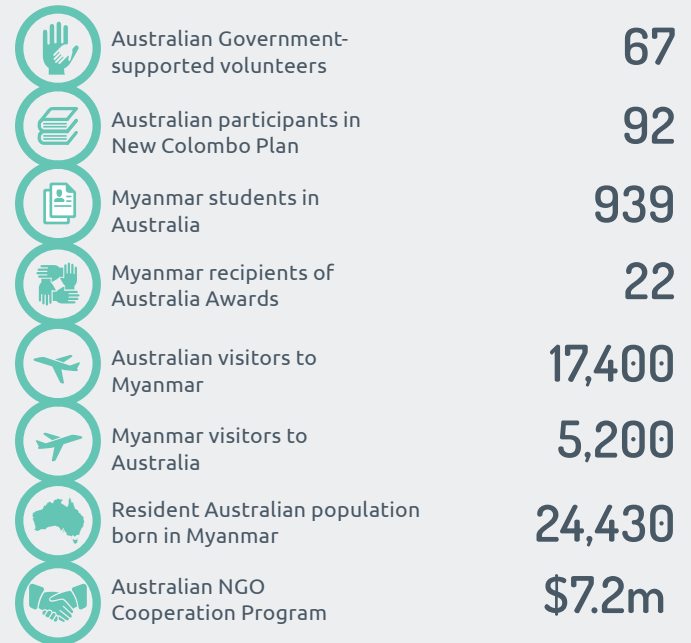
Sources: Department of Foreign Affairs and Trade – scholarships (2016), volunteers (2015-16); New Colombo Plan (2016); Department of Education – international students (2015); Australian Bureau of Statistics – trade and investment (2015), resident population by country of birth (Census 2011); Department of Immigration and Border Protection – visitors (2015-16); World Bank – remittances (2015)

\*Total Australian Government support comprises Official Development Assistance (aid) and Other Official flows (non-aid), based on OECD Development Assistance Committee guidelines.

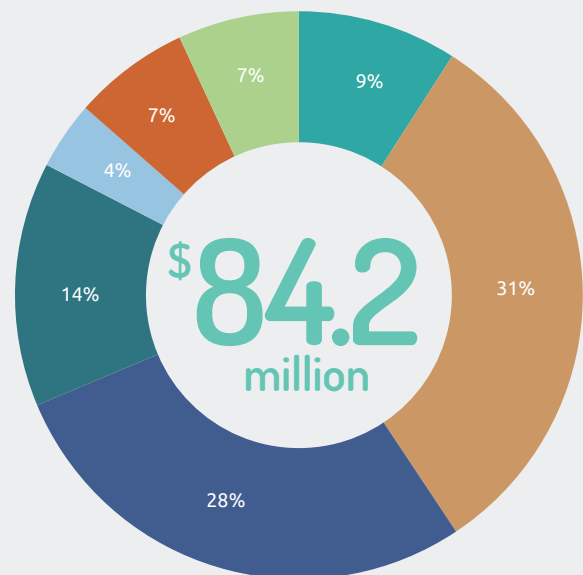
## Australian Government Expenditure (non-aid) 2015-16



## CONNECTING PEOPLE



## Australian Aid to Myanmar, by Investment Priorities 2015-16



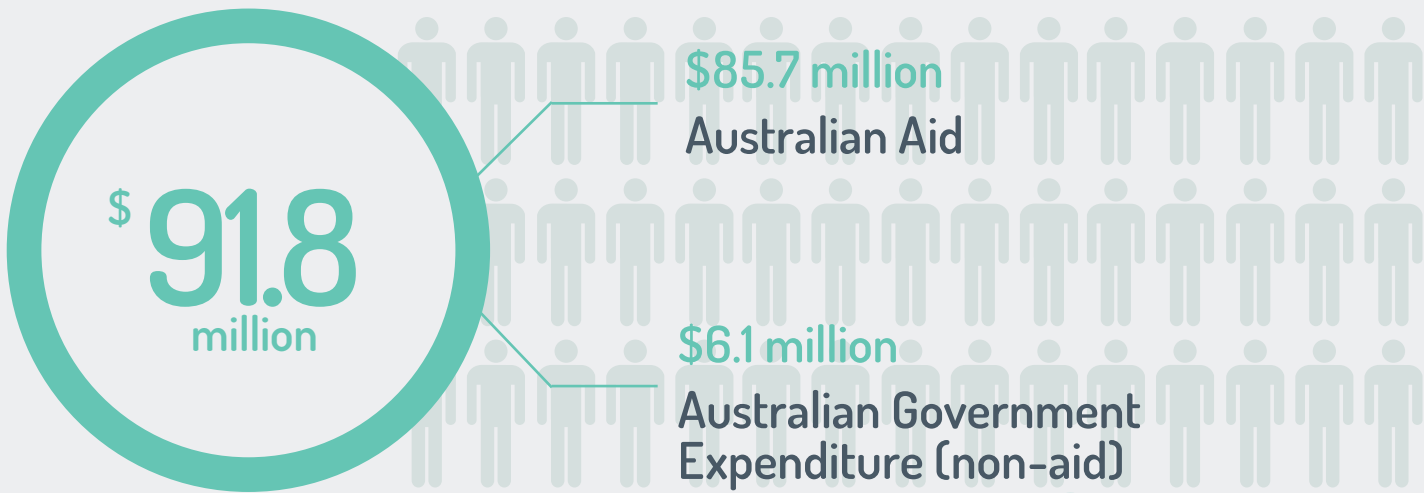
AUSTRALIAN SHARE OF TOTAL OFFICIAL DEVELOPMENT ASSISTANCE TO MYANMAR - 4.2%  
 AUSTRALIAN AID COMPARED TO MYANMAR'S ECONOMY - 0.1% OF GNI

Further information: *Australian Engagement with Developing Countries: Part 2: Official Sector Statistical Summary 2015-16.*



# AUSTRALIA AND THE PHILIPPINES

## TOTAL AUSTRALIAN GOVERNMENT SUPPORT\* (2015-16)



TWO-WAY GOODS AND SERVICES TRADE (2015)

**\$3.8 BILLION**

AUSTRALIAN INVESTMENT (2015)

**\$10 BILLION**

FILIPINO INVESTMENT (2015)

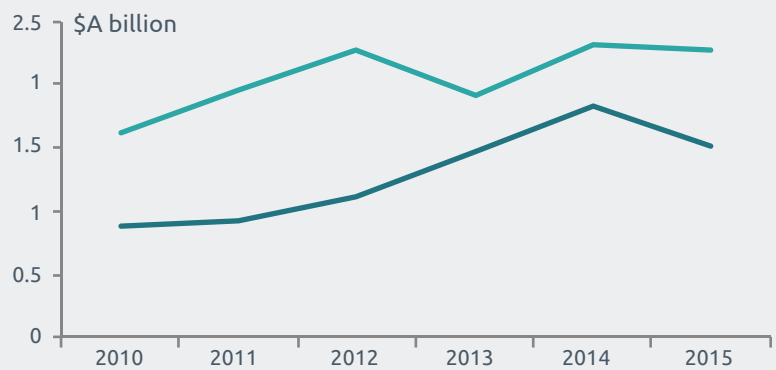
**\$473 MILLION**

MIGRANT REMITTANCES FROM AUSTRALIA TO THE PHILIPPINES

**US \$865 MILLION**

## TWO-WAY TRADE

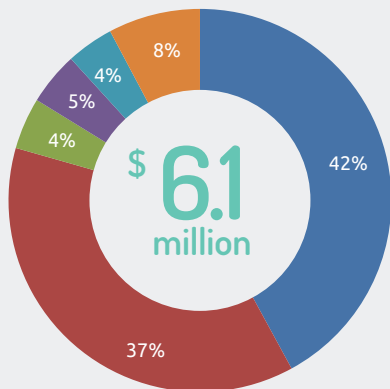
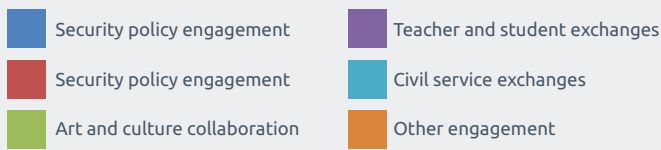
- imports to Australia from the Philippines
- exports from Australia to the Philippines



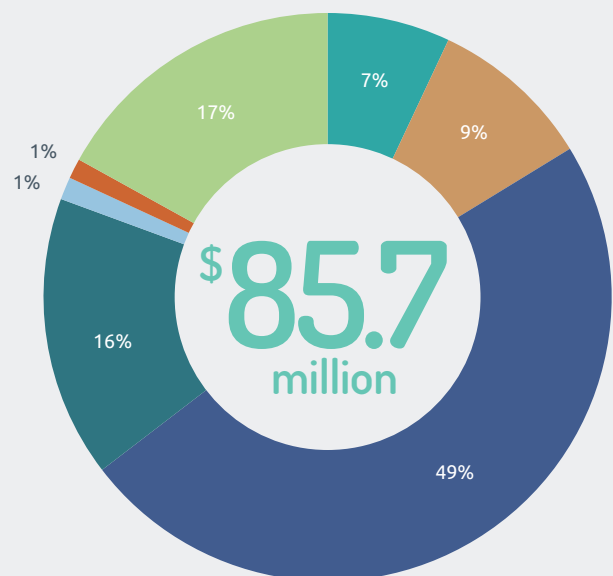
Sources: Department of Foreign Affairs and Trade – scholarships (2016), volunteers (2015-16); New Colombo Plan (2016); Department of Education – international students (2015); Australian Bureau of Statistics – trade and investment (2015), resident population by country of birth (Census 2011); Department of Immigration and Border Protection – visitors (2015-16); World Bank – remittances (2015)

\*Total Australian Government support comprises Official Development Assistance (aid) and Other Official flows (non-aid), based on OECD Development Assistance Committee guidelines.

## Australian Government Expenditure (non-aid) 2015-16

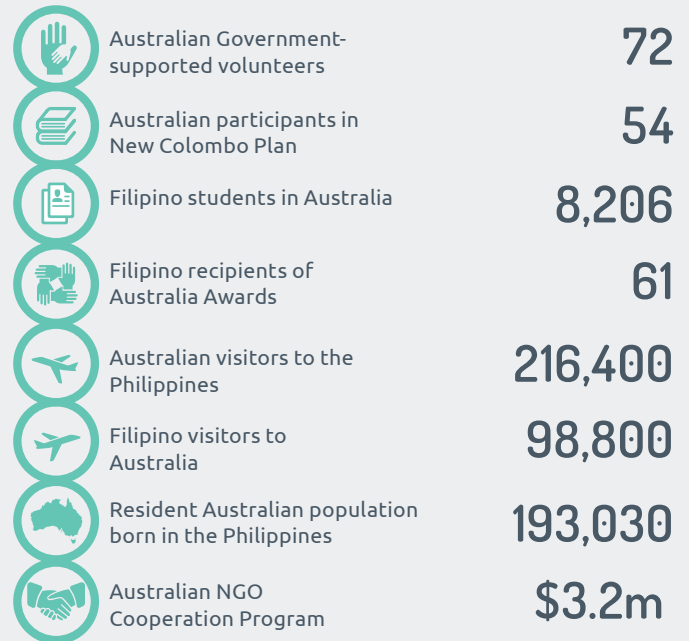


## Australian Aid to the Philippines, by Investment Priorities 2015-16



AUSTRALIAN SHARE OF TOTAL OFFICIAL DEVELOPMENT ASSISTANCE TO THE PHILIPPINES - 8.6%  
 AUSTRALIAN AID COMPARED TO THE PHILIPPINE'S ECONOMY - 0.04% OF GNI

## CONNECTING PEOPLE

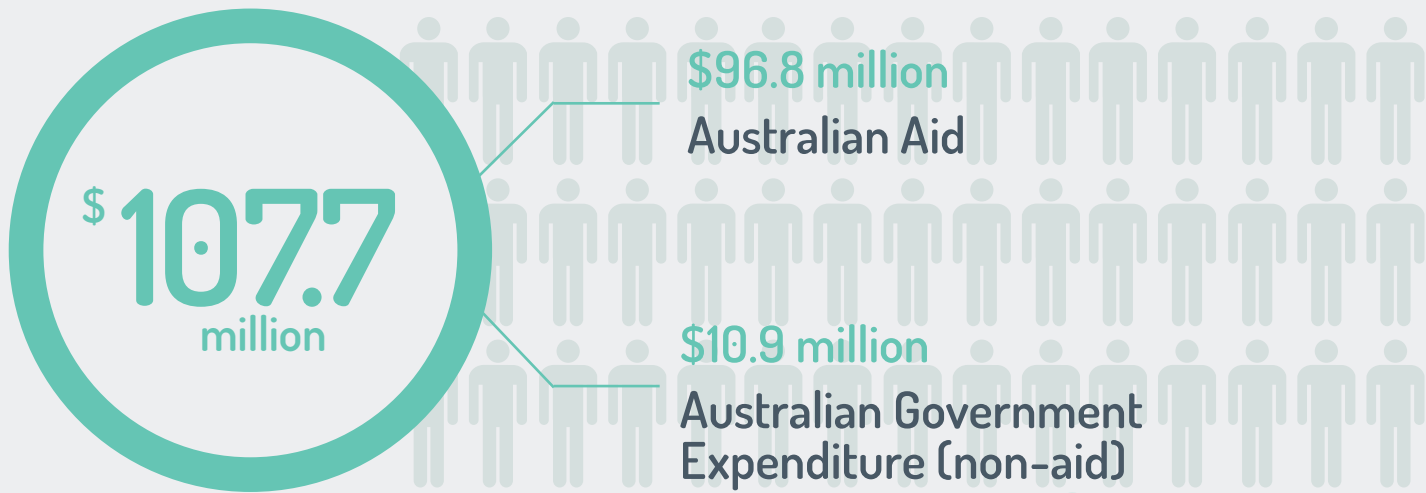


Further information: *Australian Engagement with Developing Countries: Part 2: Official Sector Statistical Summary 2015-16.*



# AUSTRALIA AND TIMOR-LESTE

## TOTAL AUSTRALIAN GOVERNMENT SUPPORT\* (2015-16)



TWO-WAY GOODS AND SERVICES TRADE (2015)

**\$215 MILLION**

JOINT DEVELOPMENT ARRANGEMENTS IN THE TIMOR SEA

**US\$12.0 BILLION**

SEASONAL WORKERS FROM TIMOR-LESTE

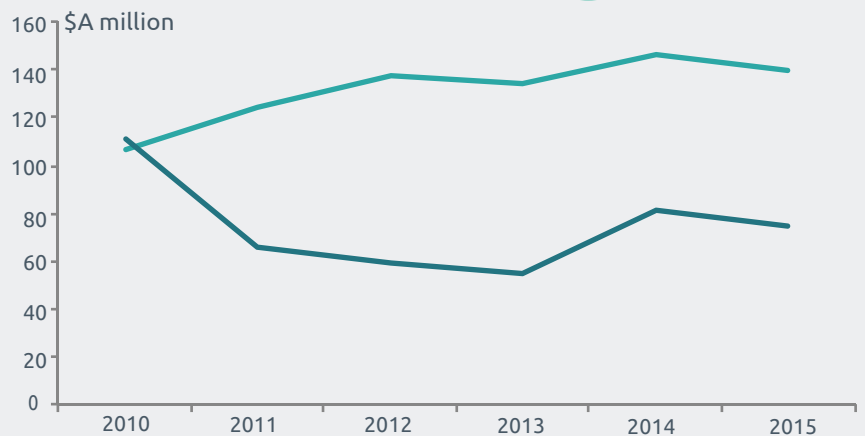
**224**

MIGRANT REMITTANCES FROM AUSTRALIA TO TIMOR-LESTE

**US \$26 MILLION**

## TWO-WAY TRADE

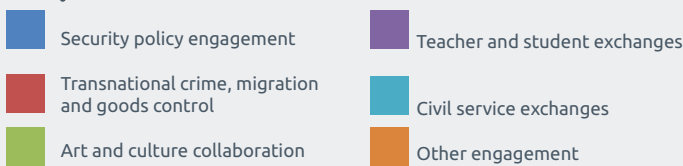
- imports to Australia from Timor-Leste
- exports from Australia to Timor-Leste



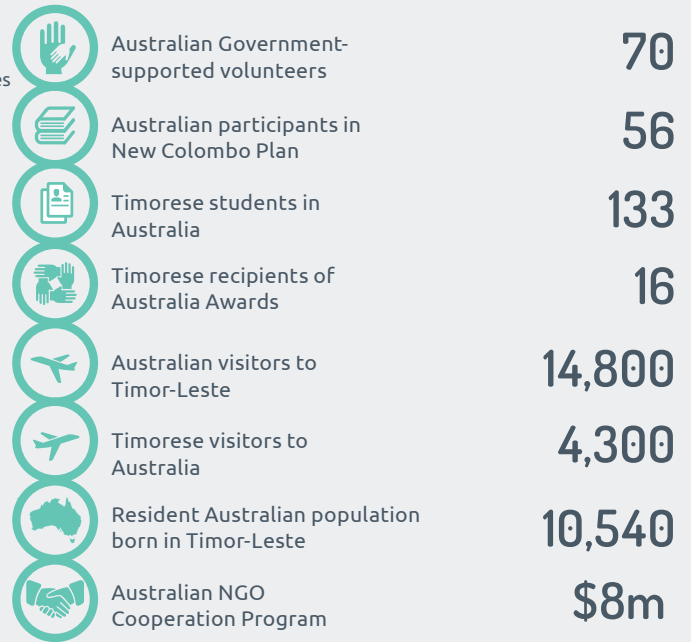
Sources: Department of Foreign Affairs and Trade – scholarships (2016), volunteers (2015-16); New Colombo Plan (2016); Department of Education – international students (2015); Australian Bureau of Statistics – trade and investment (2015), resident population by country of birth (Census 2011); Department of Immigration and Border Protection – visitors (2015-16); World Bank – remittances (2015)

\*Total Australian Government support comprises Official Development Assistance (aid) and Other Official flows (non-aid), based on OECD Development Assistance Committee guidelines.

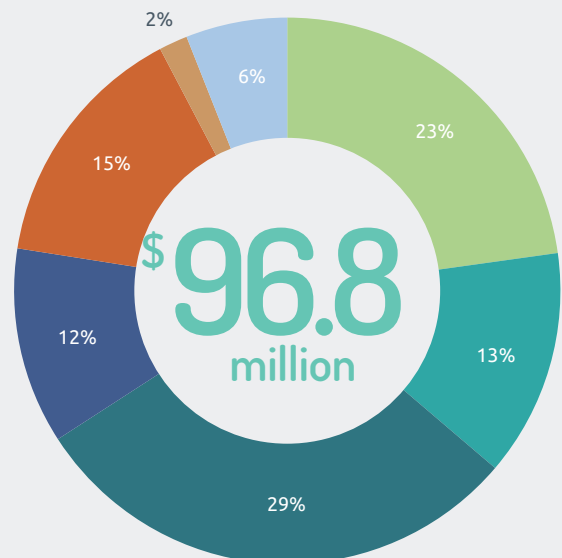
## Australian Government Expenditure (non-aid) 2015-16



## CONNECTING PEOPLE



## Australian Aid to Timor-Leste, by Investment Priorities 2015-16



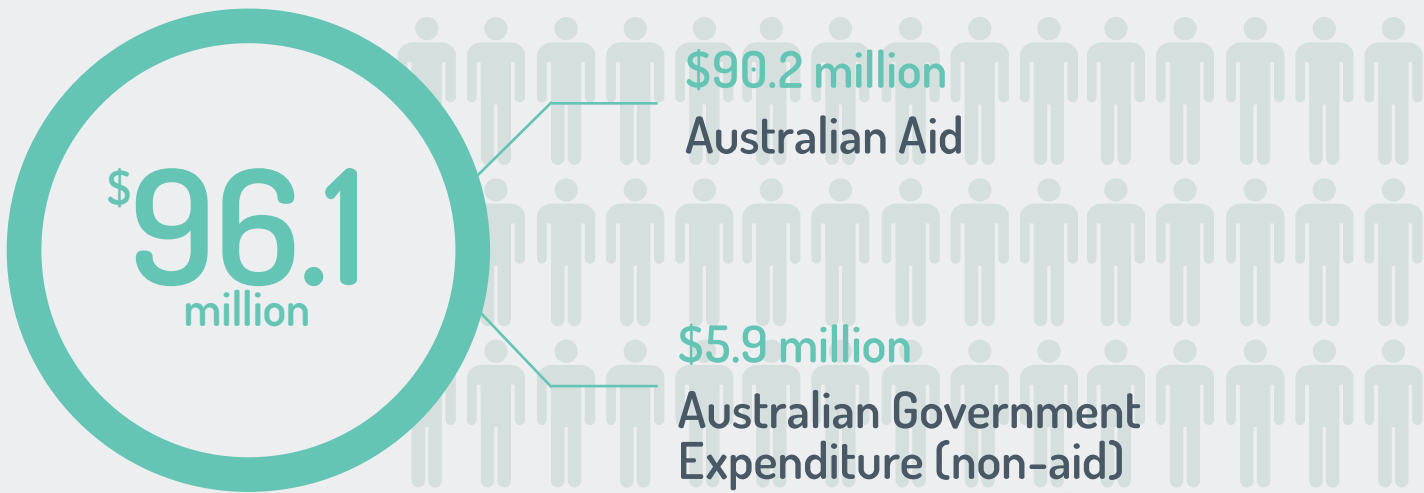
AUSTRALIAN SHARE OF TOTAL OFFICIAL DEVELOPMENT ASSISTANCE TO TIMOR-LESTE - 36.4%  
 AUSTRALIAN AID COMPARED TO TIMOR-LESTE'S ECONOMY - 2.8% OF GNI

Further information: *Australian Engagement with Developing Countries: Part 2: Official Sector Statistical Summary 2015-16.*



# AUSTRALIA AND VIETNAM

## TOTAL AUSTRALIAN GOVERNMENT SUPPORT\* (2015-16)



TWO-WAY GOODS AND SERVICES TRADE (2015)

**\$10.1 BILLION**

AUSTRALIAN INVESTMENT (2015)

**\$1.5 BILLION**

VIETNAMESE INVESTMENT (2015)

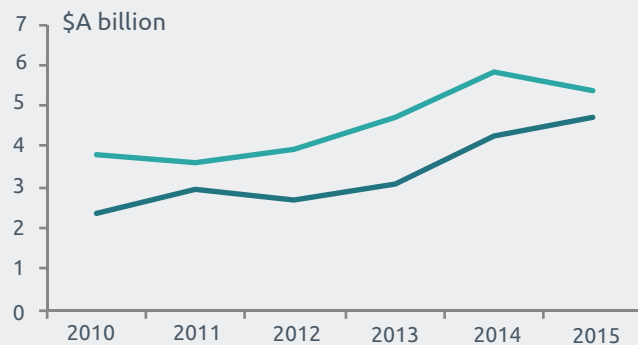
**\$468 MILLION**

MIGRANT REMITTANCES FROM AUSTRALIA TO VIETNAM

**US \$1.1 BILLION**

## TWO-WAY TRADE

- imports to Australia from Vietnam
- exports from Australia to Vietnam

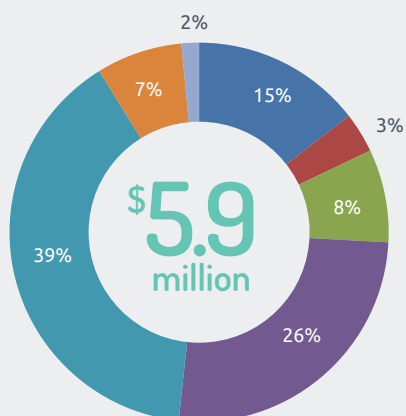
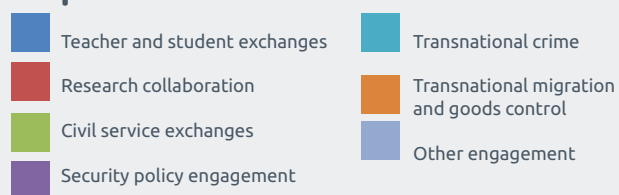


Sources: Department of Foreign Affairs and Trade – scholarships (2016), volunteers (2015-16); New Colombo Plan (2016); Department of Education – international students (2015); Australian Bureau of Statistics – trade and investment (2015), resident population by country of birth (Census 2011); Department of Immigration and Border Protection – visitors (2015-16); World Bank – remittances (2015)

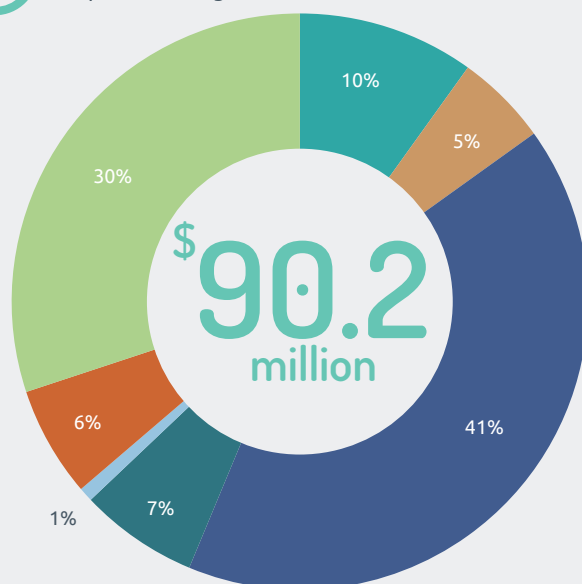
\*Total Australian Government support comprises Official Development Assistance (aid) and Other Official flows (non-aid), based on OECD Development Assistance Committee guidelines.



## Australian Government Expenditure (non-aid) 2015-16



## Australian Aid to Vietnam, by Investment Priorities 2015-16



## CONNECTING PEOPLE



AUSTRALIAN SHARE OF TOTAL OFFICIAL DEVELOPMENT ASSISTANCE TO VIETNAM - 2.6%  
 AUSTRALIAN AID COMPARED TO VIETNAM'S ECONOMY - 0.07% OF GNI

Further information: *Australian Engagement with Developing Countries: Part 2: Official Sector Statistical Summary 2015-16.*



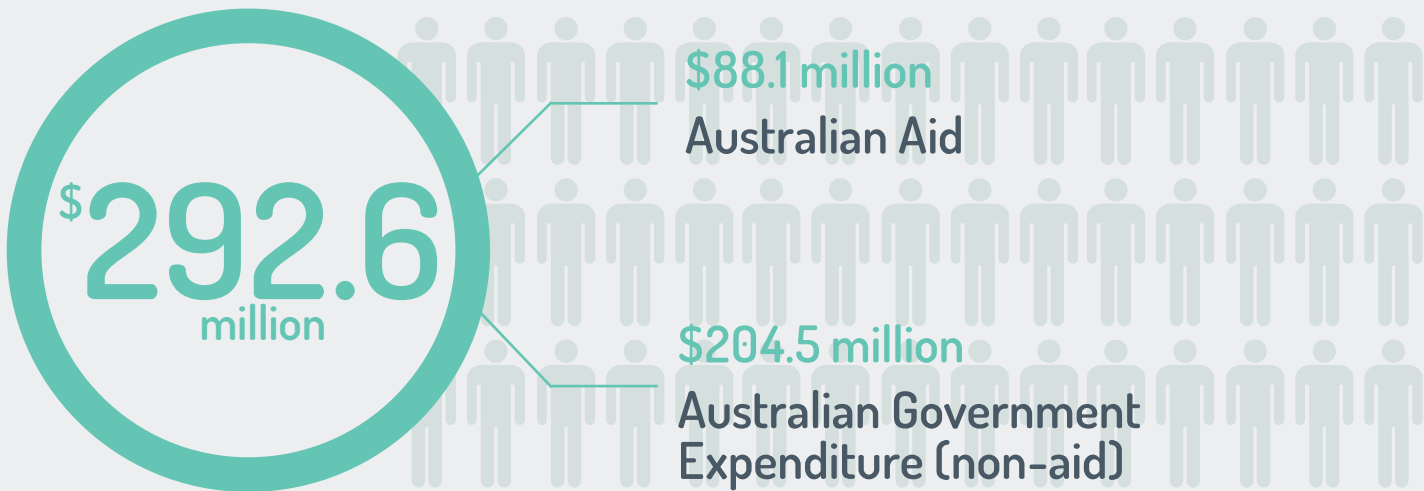
# SOUTH and WEST ASIA





# AUSTRALIA AND AFGHANISTAN

## TOTAL AUSTRALIAN GOVERNMENT SUPPORT\* (2015-16)



## TWO-WAY GOODS AND SERVICES TRADE (2015)

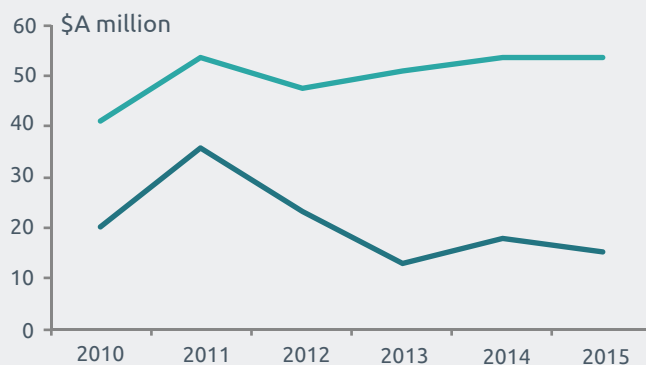
**\$69 MILLION**

## MIGRANT REMITTANCES FROM AUSTRALIA TO AFGHANISTAN

**US \$3 MILLION**

## TWO-WAY TRADE

- imports to Australia from Afghanistan
- exports from Australia to Afghanistan

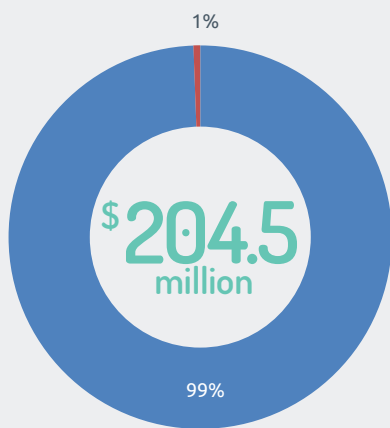


Sources: Department of Education – international students (2015); Australian Bureau of Statistics – trade and investment (2015), resident population by country of birth (Census 2011); Department of Immigration and Border Protection – visitors (2015-16); World Bank – remittances (2015)

\*Total Australian Government support comprises Official Development Assistance (aid) and Other Official flows (non-aid), based on OECD Development Assistance Committee guidelines.

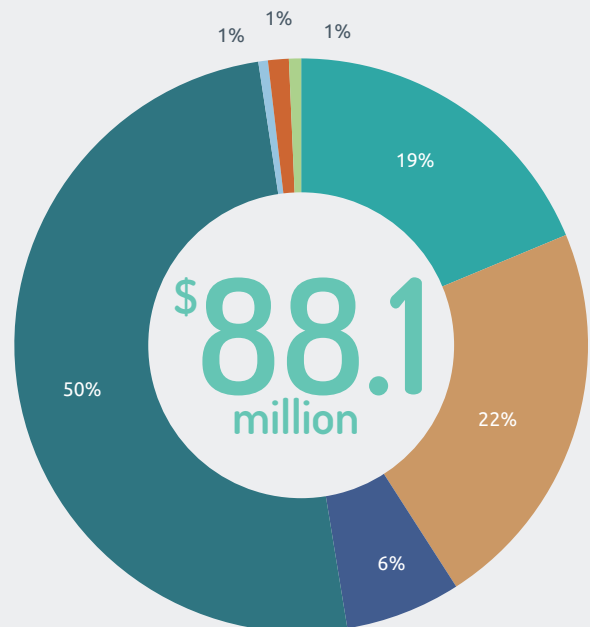
## Australian Government Expenditure (non-aid) 2015-16

- Support for peace and security
- Other engagement



## Australian Aid to Afghanistan, by Investment Priorities 2015-16

- Agriculture
- Building resilience
- Education
- Effective governance
- General development support
- Health
- Infrastructure and trade



AUSTRALIAN SHARE OF TOTAL OFFICIAL DEVELOPMENT ASSISTANCE TO AFGHANISTAN - 3.1%  
 AUSTRALIAN AID COMPARED TO AFGHANISTAN'S ECONOMY - 0.7% OF GNI

Further information: *Australian Engagement with Developing Countries: Part 2: Official Sector Statistical Summary 2015-16.*

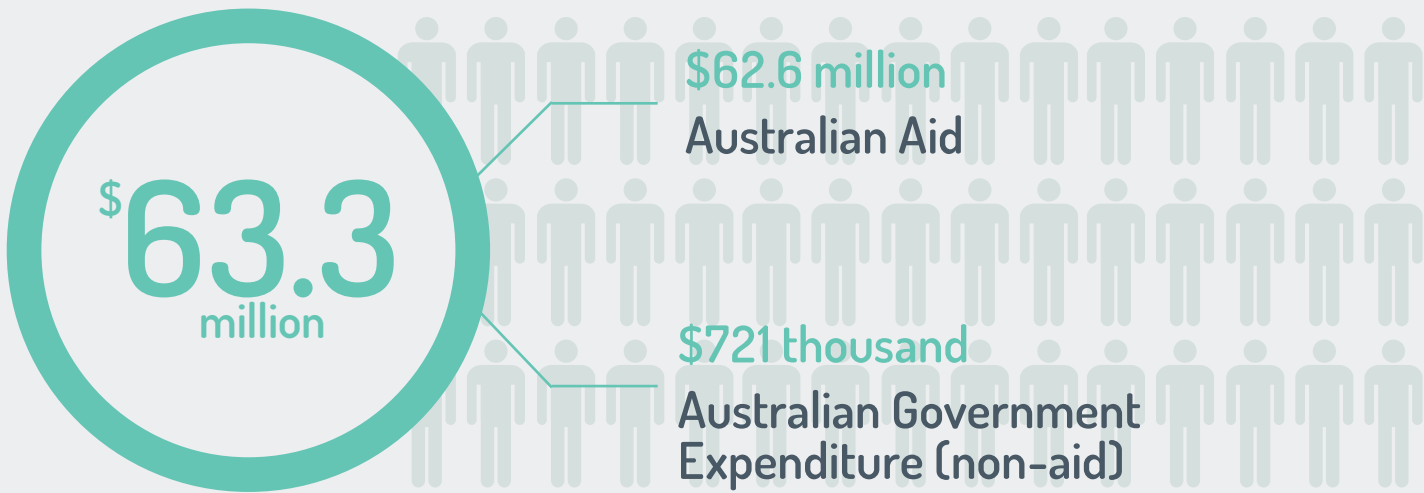
## CONNECTING PEOPLE





# AUSTRALIA AND BANGLADESH

## TOTAL AUSTRALIAN GOVERNMENT SUPPORT\* (2015-16)



TWO-WAY GOODS AND SERVICES TRADE (2015)

**\$1.9 BILLION**

AUSTRALIAN INVESTMENT (2015)

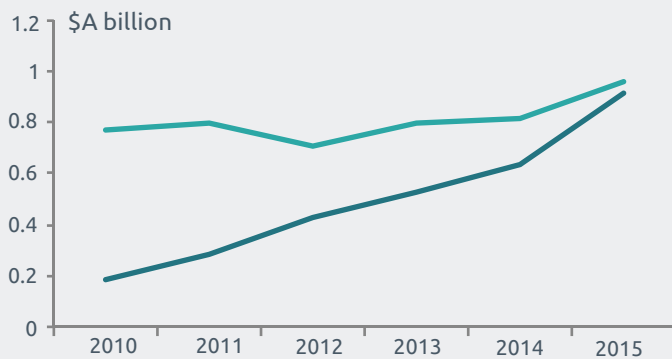
**\$53 MILLION**

MIGRANT REMITTANCES FROM AUSTRALIA TO BANGLADESH

**US \$70 MILLION**

## TWO-WAY TRADE

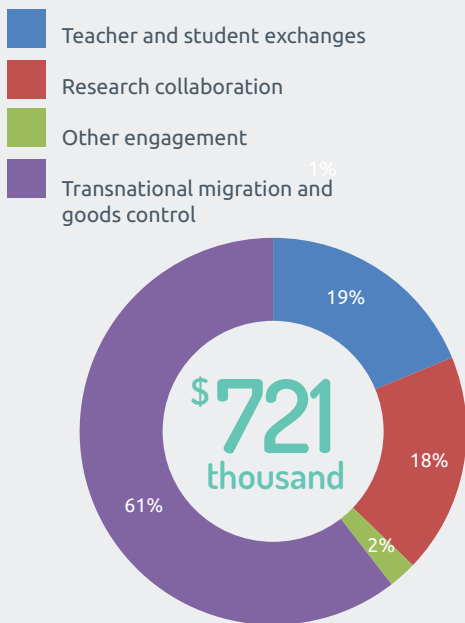
- imports to Australia from Bangladesh
- exports from Australia to Bangladesh



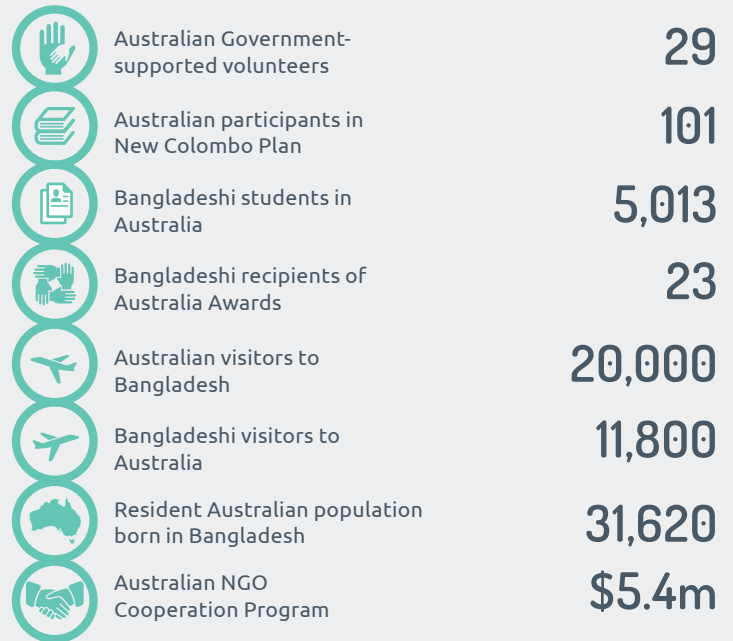
Sources: Department of Foreign Affairs and Trade – scholarships (2016), volunteers (2015-16); New Colombo Plan (2016); Department of Education – international students (2015); Australian Bureau of Statistics – trade and investment (2015), resident population by country of birth (Census 2011); Department of Immigration and Border Protection – visitors (2015-16); World Bank – remittances (2015)

\*Total Australian Government support comprises Official Development Assistance (aid) and Other Official flows (non-aid), based on OECD Development Assistance Committee guidelines.

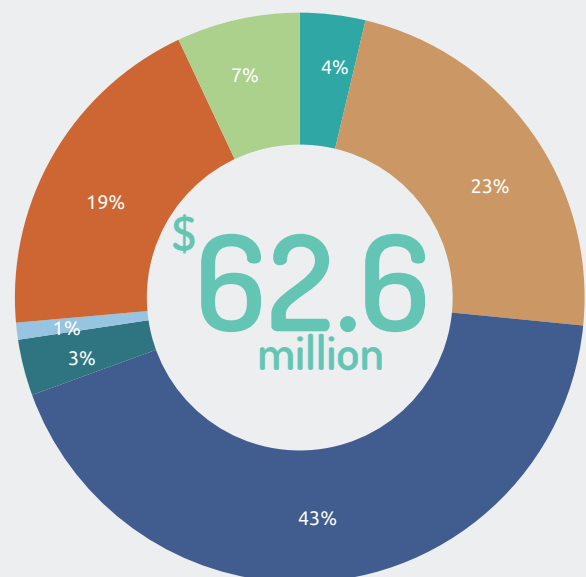
## Australian Government Expenditure (non-aid) 2015-16



## CONNECTING PEOPLE



## Australian Aid to Bangladesh, by Investment Priorities 2015-16



AUSTRALIAN SHARE OF TOTAL OFFICIAL DEVELOPMENT ASSISTANCE TO BANGLADESH - 2.7%  
 AUSTRALIAN AID COMPARED TO BANGLADESH'S ECONOMY - 0.05% OF GNI

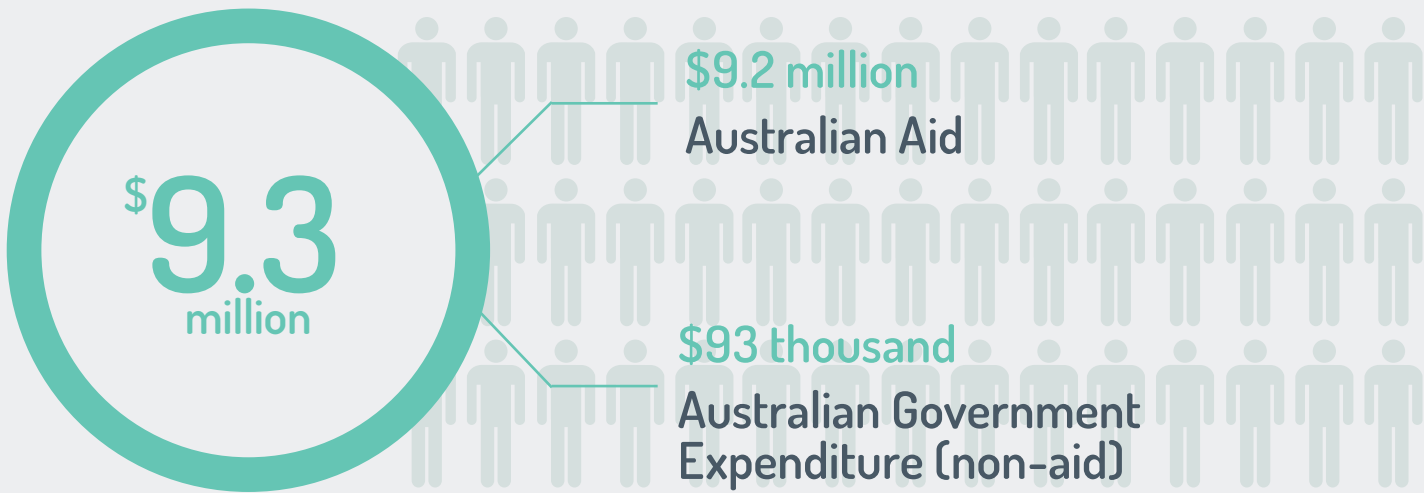
Further information: *Australian Engagement with Developing Countries: Part 2: Official Sector Statistical Summary 2015-16.*



# AUSTRALIA AND BHUTAN



## TOTAL AUSTRALIAN GOVERNMENT SUPPORT\* (2015-16)

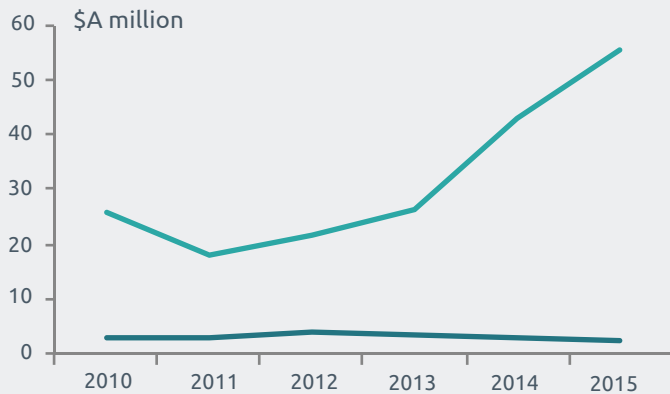


## TWO-WAY GOODS AND SERVICES TRADE (2015)

**\$58** MILLION

### TWO-WAY TRADE

- imports to Australia from Bhutan
- exports from Australia to Bhutan





Sources: Department of Foreign Affairs and Trade – scholarships (2016), volunteers (2015-16); New Colombo Plan (2016); Department of Education – international students (2015); Australian Bureau of Statistics – trade and investment (2015), resident population by country of birth (Census 2011); Department of Immigration and Border Protection – visitors (2015-16)  
 \*Total Australian Government support comprises Official Development Assistance (aid) and Other Official flows (non-aid), based on OECD Development Assistance Committee guidelines.

## Australian Government Expenditure (non-aid) 2015-16

Teacher and student exchanges

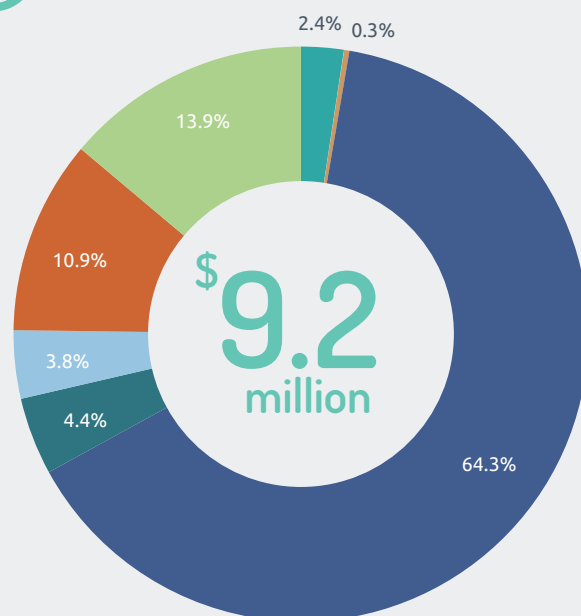


## CONNECTING PEOPLE

	Australian Government-supported volunteers	22
	Australian participants in New Colombo Plan	31
	Bhutanese students in Australia	1,089
	Bhutanese recipients of Australia Awards	21
	Australian visitors to Bhutan	1,200
	Bhutanese visitors to Australia	1,100
	Resident Australian population born in Bhutan	2,680
	Australian NGO Cooperation Program	\$0.1m

## Australian Aid to Bhutan, by Investment Priorities 2015-16

-  Agriculture
-  Building resilience
-  Education
-  Effective governance
-  General development support
-  Health
-  Infrastructure and trade



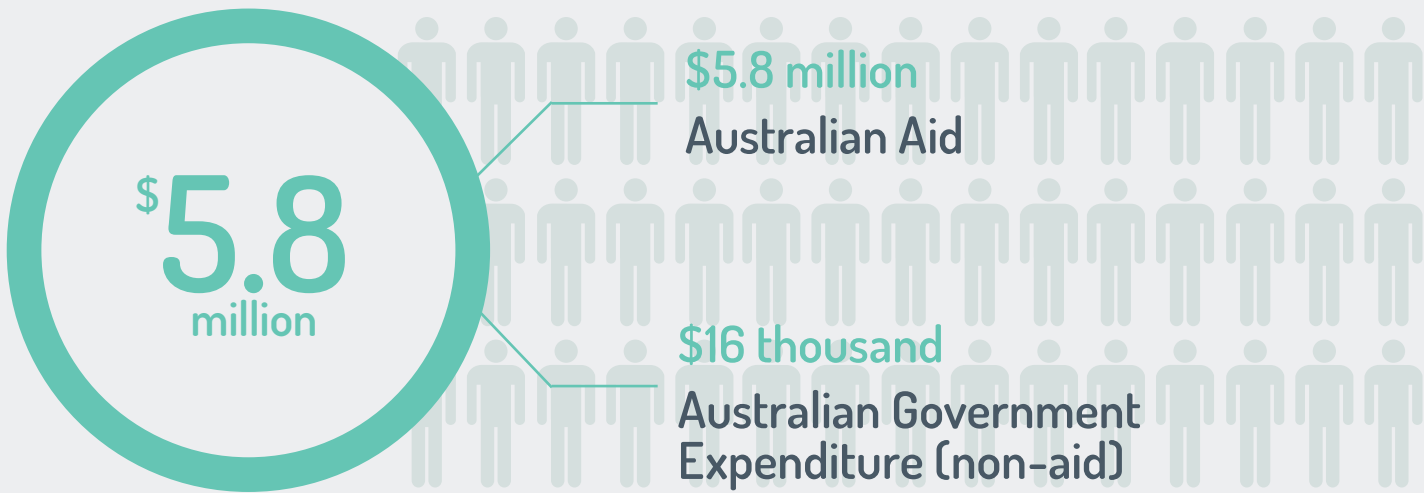
**AUSTRALIAN SHARE OF TOTAL OFFICIAL DEVELOPMENT ASSISTANCE TO BHUTAN - 7.6%**  
**AUSTRALIAN AID COMPARED TO BHUTAN'S ECONOMY - 0.6% OF GNI**

Further information: *Australian Engagement with Developing Countries: Part 2: Official Sector Statistical Summary 2015-16.*



# AUSTRALIA AND THE MALDIVES

## TOTAL AUSTRALIAN GOVERNMENT SUPPORT\* (2015-16)



## TWO-WAY GOODS AND SERVICES TRADE (2015)

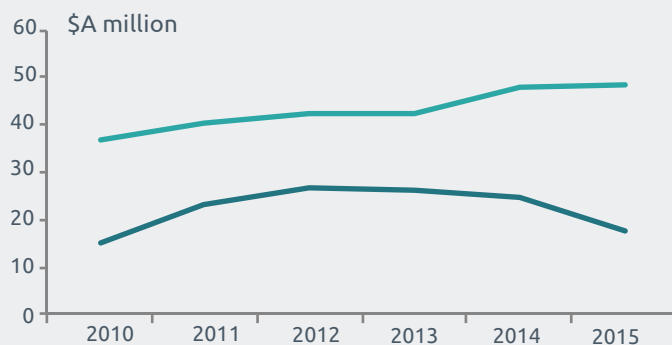
**\$66 MILLION**

## MIGRANT REMITTANCES FROM AUSTRALIA TO THE MALDIVES

**US \$1 MILLION**

## TWO-WAY TRADE

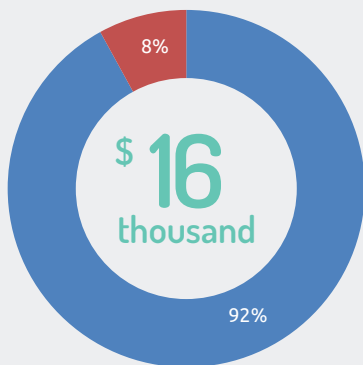
- imports to Australia from the Maldives
- exports from Australia to the Maldives



Sources: Department of Foreign Affairs and Trade – scholarships (2016), New Colombo Plan (2016); Department of Education – international students (2015); Australian Bureau of Statistics – trade and investment (2015), resident population by country of birth (Census 2011); Department of Immigration and Border Protection – visitors (2015-16); World Bank – remittances (2015)  
 \*Total Australian Government support comprises Official Development Assistance (aid) and Other Official flows (non-aid), based on OECD Development Assistance Committee guidelines.

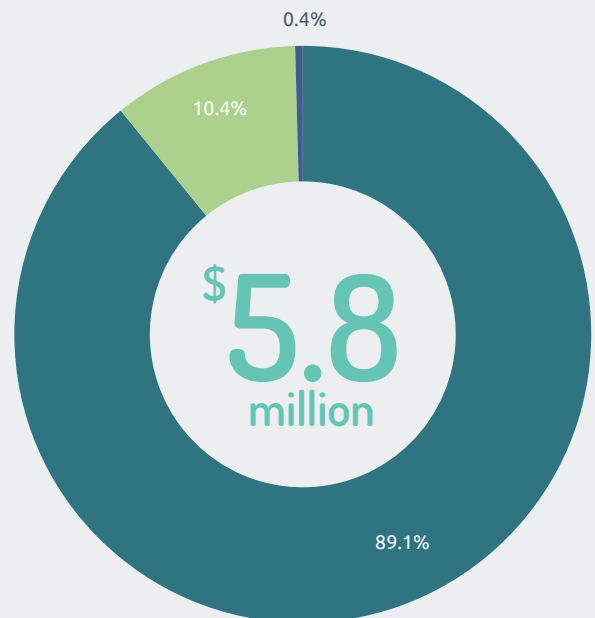
## Australian Government Expenditure (non-aid) 2015-16

- Teacher and student exchanges
- Transnational migration and goods control



## Australian Aid to the Maldives, by Investment Priorities 2015-16

- Education
- Effective governance
- Infrastructure and trade



## CONNECTING PEOPLE

	Australian participants in New Colombo Plan	1
	Maldivian students in Australia	158
	Maldivian recipients of Australia Awards	10
	Australian visitors to the Maldives	10,900
	Maldivian visitors to Australia	900
	Resident Australian population born in the Maldives	440
	Australian NGO Cooperation Program	\$0.1m

AUSTRALIAN SHARE OF TOTAL OFFICIAL DEVELOPMENT ASSISTANCE TO THE MALDIVES - 15%  
 AUSTRALIAN AID COMPARED TO THE MALDIVES' ECONOMY - 0.2% OF GNI

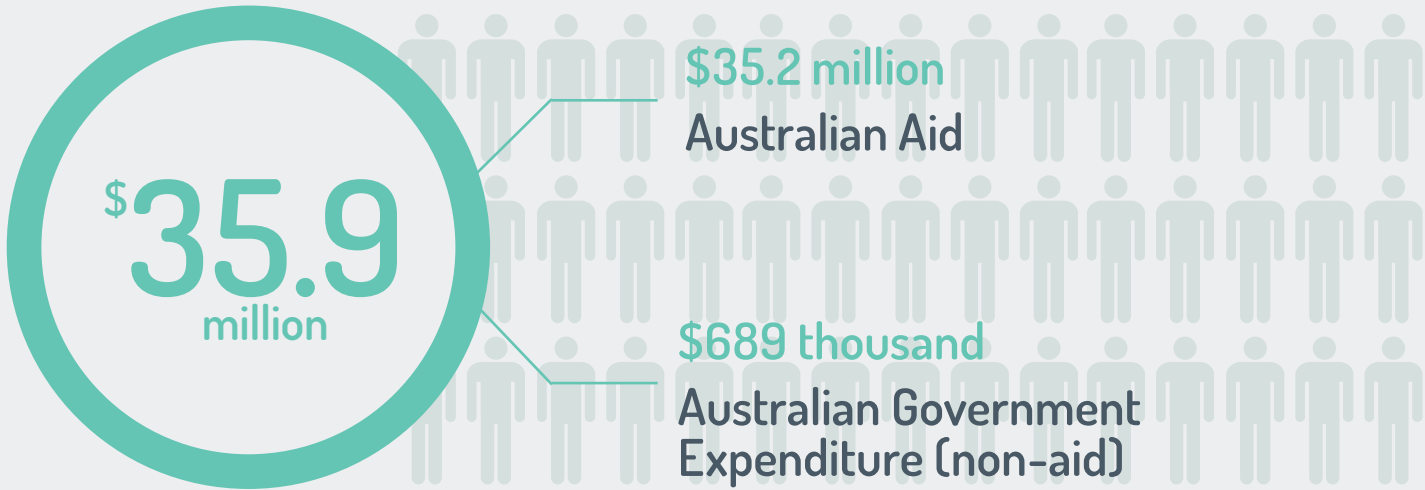
Further information: *Australian Engagement with Developing Countries: Part 2: Official Sector Statistical Summary 2015-16.*



# AUSTRALIA AND NEPAL



## TOTAL AUSTRALIAN GOVERNMENT SUPPORT\* (2015-16)



## TWO-WAY GOODS AND SERVICES TRADE (2015)

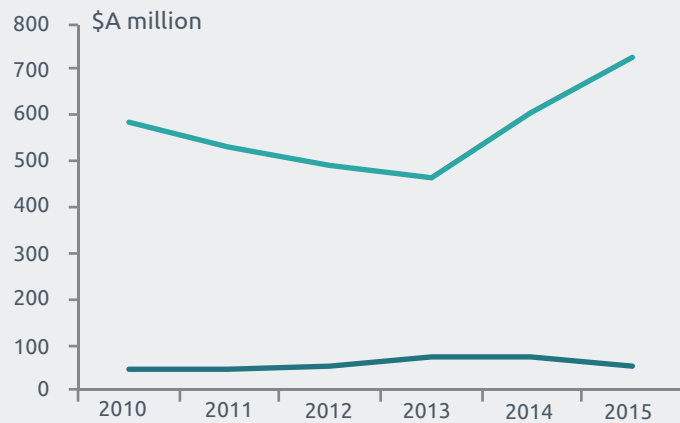
**\$785 MILLION**

## MIGRANT REMITTANCES FROM AUSTRALIA TO NEPAL

**US \$106 MILLION**

## TWO-WAY TRADE

- imports to Australia from Nepal
- exports from Australia to Nepal



Sources: Department of Foreign Affairs and Trade – scholarships (2016), volunteers (2015-16); New Colombo Plan (2016); Department of Education – international students (2015); Australian Bureau of Statistics – trade and investment (2015), resident population by country of birth (Census 2011); Department of Immigration and Border Protection – visitors (2015-16); World Bank – remittances (2015)

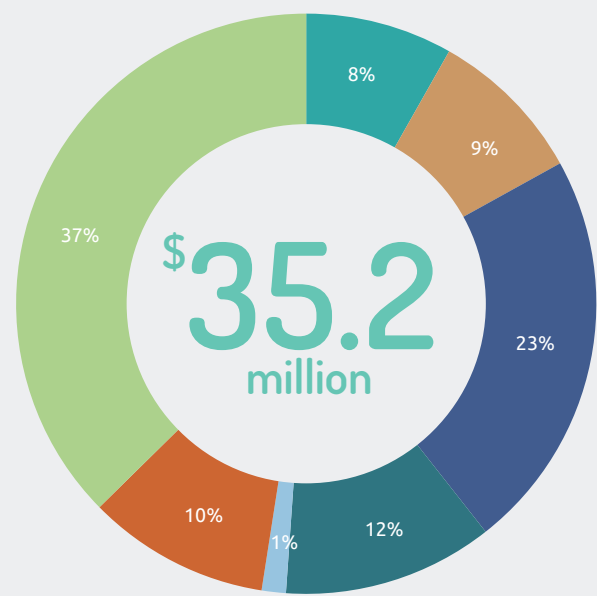
\*Total Australian Government support comprises Official Development Assistance (aid) and Other Official flows (non-aid), based on OECD Development Assistance Committee guidelines.

## Australian Government Expenditure (non-aid) 2015-16

Teacher and student exchanges



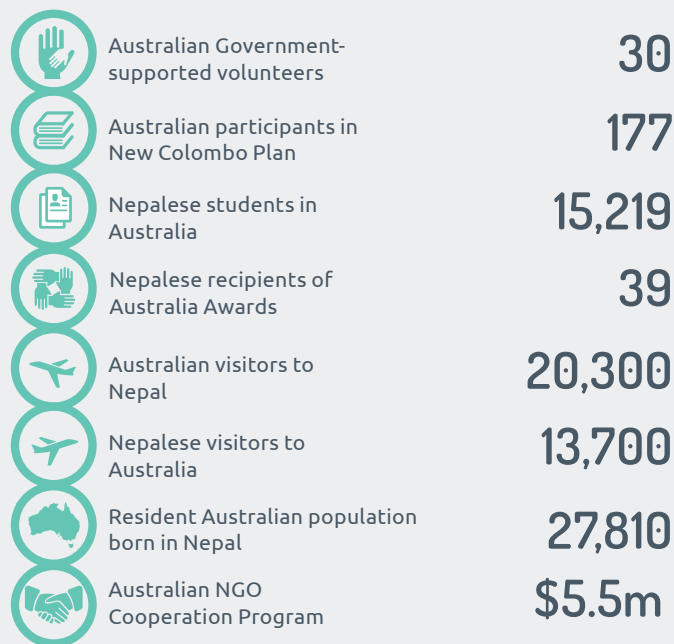
## Australian Aid to Nepal, by Investment Priorities 2015-16



**AUSTRALIAN SHARE OF TOTAL OFFICIAL DEVELOPMENT ASSISTANCE TO NEPAL - 1.3%**  
**AUSTRALIAN AID COMPARED TO NEPAL'S ECONOMY - 0.07% OF GNI**

Further information: *Australian Engagement with Developing Countries: Part 2: Official Sector Statistical Summary 2015-16.*

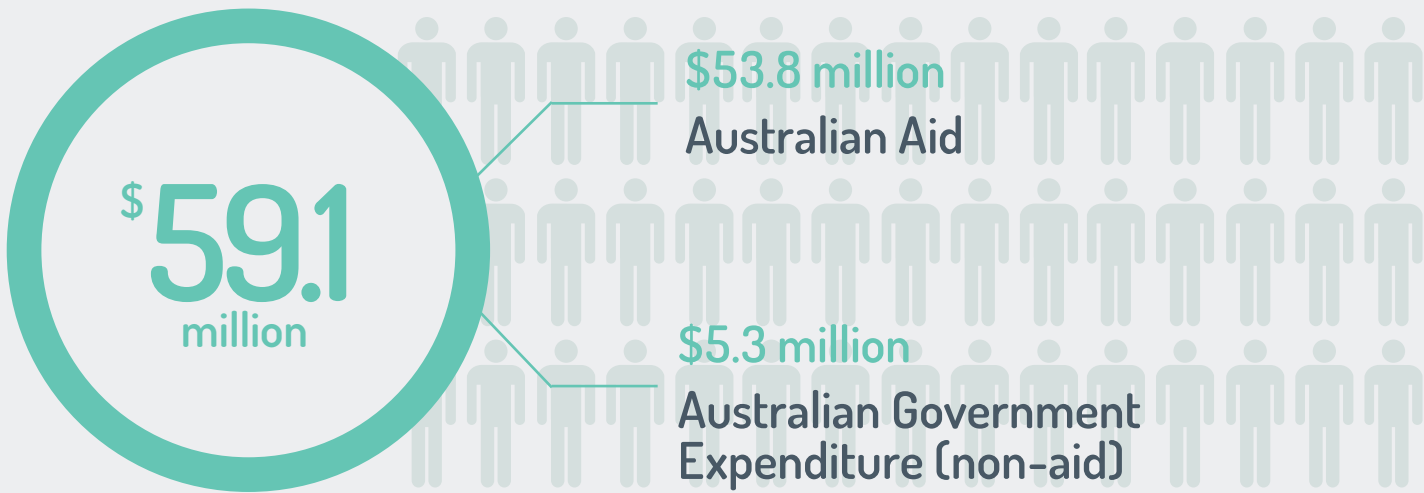
## CONNECTING PEOPLE





# AUSTRALIA AND PAKISTAN

## TOTAL AUSTRALIAN GOVERNMENT SUPPORT\* (2015-16)



## TWO-WAY GOODS AND SERVICES TRADE (2015)

**\$1.5 BILLION**

## PAKISTAN'S INVESTMENT (2015)

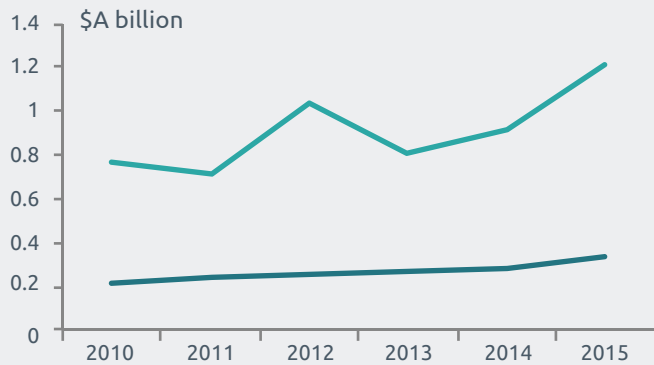
**\$37 MILLION**

## MIGRANT REMITTANCES FROM AUSTRALIA TO PAKISTAN

**US \$104 MILLION**

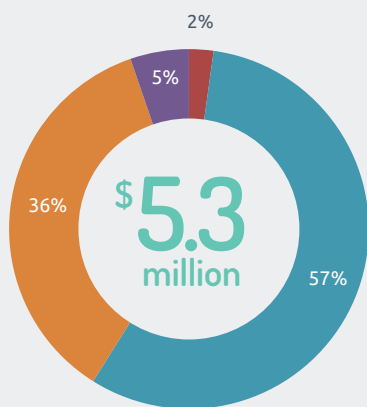
## TWO-WAY TRADE

- imports to Australia from Pakistan
- exports from Australia to Pakistan

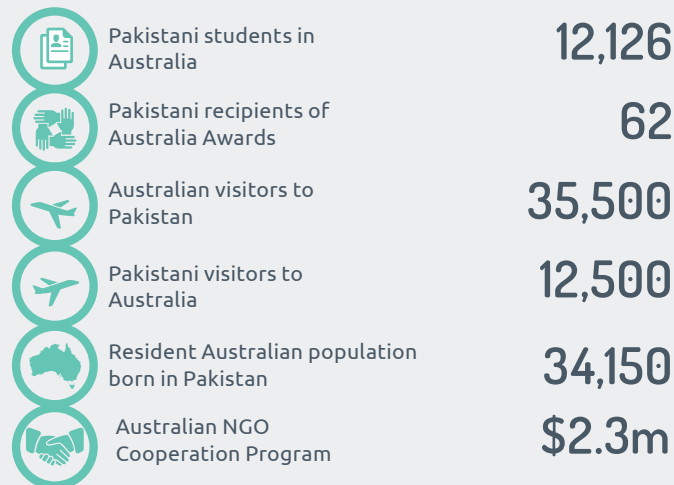


Sources: Department of Foreign Affairs and Trade – scholarships (2016); Department of Education – international students (2015); Australian Bureau of Statistics – trade and investment (2015), resident population by country of birth (Census 2011); Department of Immigration and Border Protection – visitors (2015-16); World Bank – remittances (2015)  
 \*Total Australian Government support comprises Official Development Assistance (aid) and Other Official flows (non-aid), based on OECD Development Assistance Committee guidelines.

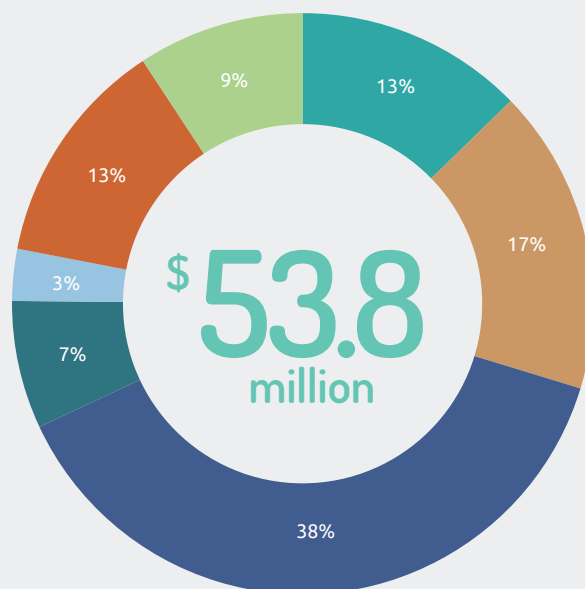
## Australian Government Expenditure (non-aid) 2015-16



## CONNECTING PEOPLE



## Australian Aid to Pakistan, by Investment Priorities 2015-16



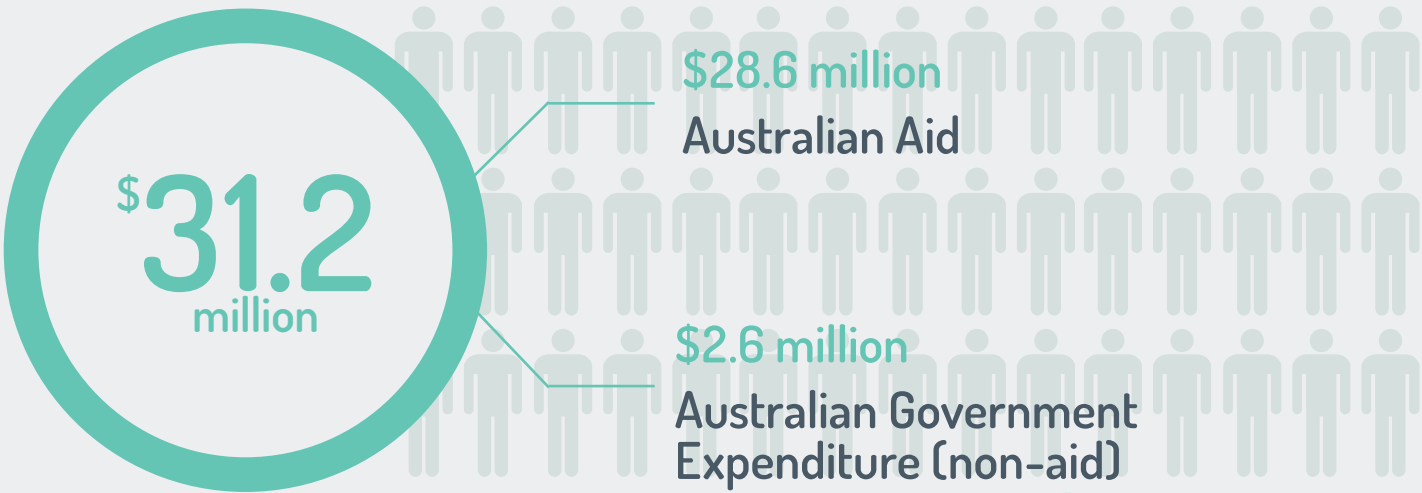
AUSTRALIAN SHARE OF TOTAL OFFICIAL DEVELOPMENT ASSISTANCE TO PAKISTAN - 1.7%  
 AUSTRALIAN AID COMPARED TO PAKISTAN'S ECONOMY - 0.03% OF GNI

Further information: *Australian Engagement with Developing Countries: Part 2: Official Sector Statistical Summary 2015-16.*



# AUSTRALIA AND SRI LANKA

## TOTAL AUSTRALIAN GOVERNMENT SUPPORT\* (2015-16)



TWO-WAY GOODS AND SERVICES TRADE (2015)

**\$951 MILLION**

AUSTRALIAN INVESTMENT (2015)

**\$47 MILLION**

SRI LANKAN INVESTMENT (2015)

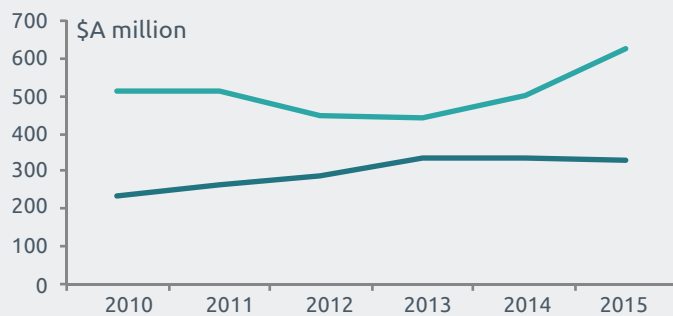
**\$133 MILLION**

MIGRANT REMITTANCES FROM AUSTRALIA TO SRI LANKA

**US \$380 MILLION**

## TWO-WAY TRADE

- imports to Australia from Sri Lanka
- exports from Australia to Sri Lanka



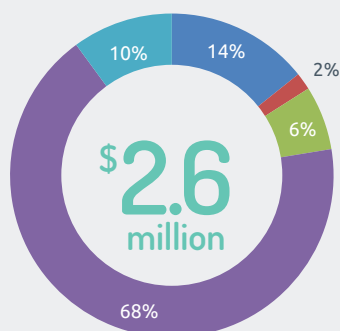
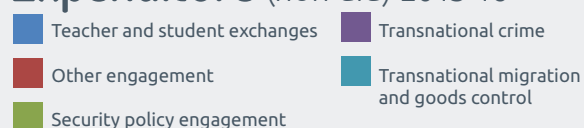
Sources: Department of Foreign Affairs and Trade – scholarships (2016), volunteers (2015-16); New Colombo Plan (2016); Department of Education – international students (2015); Australian Bureau of Statistics – trade and investment (2015), resident population by country of birth (Census 2011); Department of Immigration and Border Protection – visitors (2015-16); World Bank – remittances (2015)

\*Total Australian Government support comprises Official Development Assistance (aid) and Other Official flows (non-aid), based on OECD Development Assistance Committee guidelines.



## Australian Government

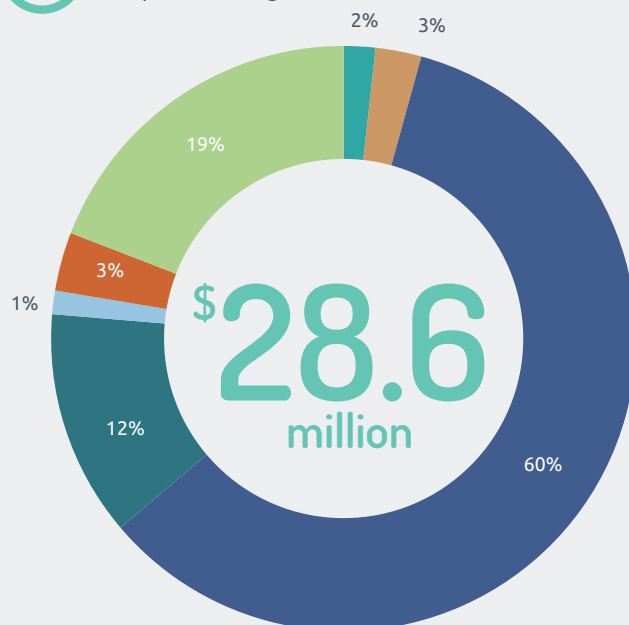
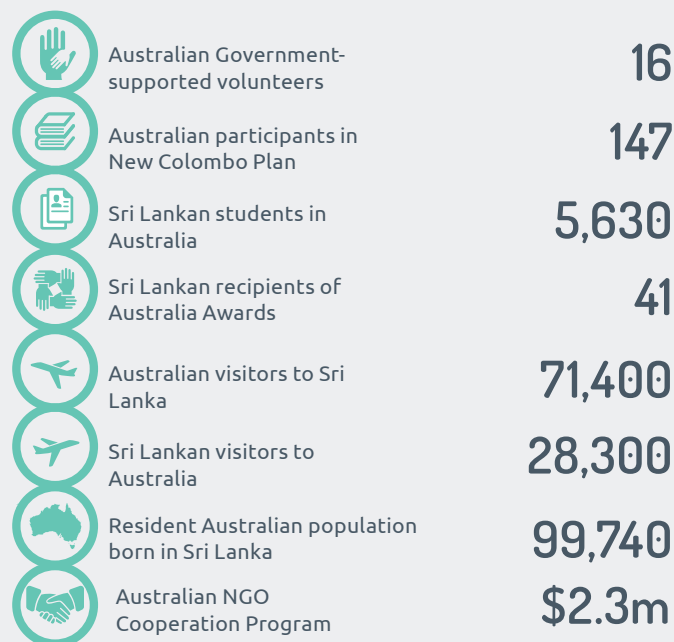
### Expenditure (non-aid) 2015-16



## Australian Aid to Sri Lanka, by Investment Priorities 2015-16



## CONNECTING PEOPLE



AUSTRALIAN SHARE OF TOTAL OFFICIAL DEVELOPMENT ASSISTANCE TO SRI LANKA - 5.4%  
 AUSTRALIAN AID COMPARED TO SRI LANKA'S ECONOMY - 0.07% OF GNI

Further information: *Australian Engagement with Developing Countries: Part 2: Official Sector Statistical Summary 2015-16.*

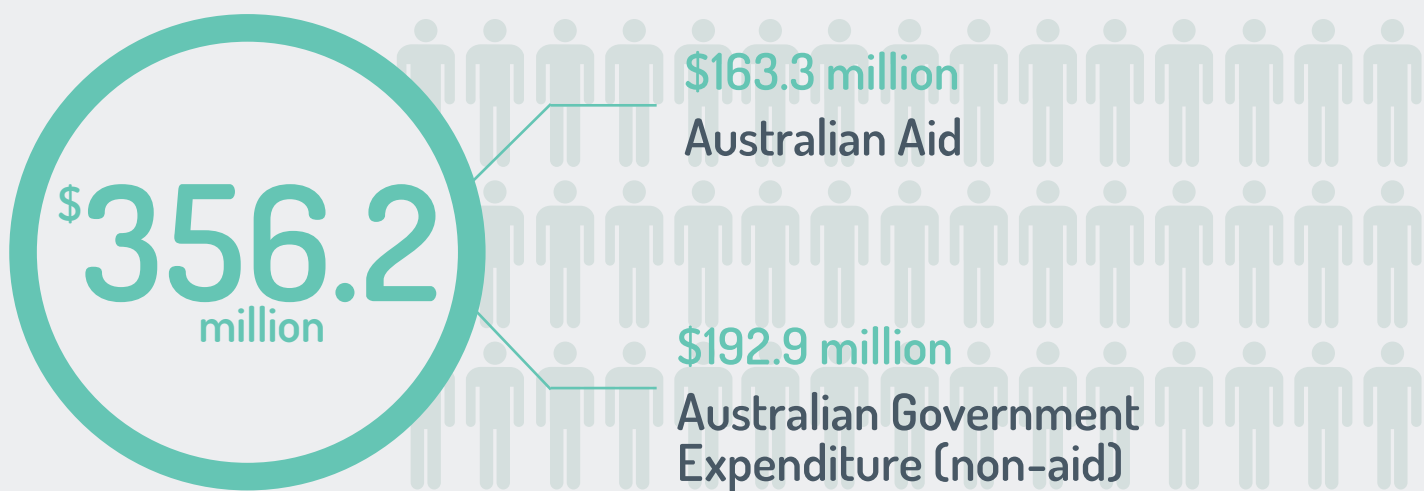


# SUB-SAHARAN AFRICA



# AUSTRALIA AND SUB-SAHARAN AFRICA

## TOTAL AUSTRALIAN GOVERNMENT SUPPORT\* (2015-16)



TWO-WAY GOODS AND SERVICES TRADE (2015)

**\$6.7 BILLION**

AUSTRALIAN INVESTMENT IN AFRICAN MINING SECTOR

**\$30 BILLION**

ASX-LISTED COMPANIES ACTIVE ACROSS THE CONTINENT

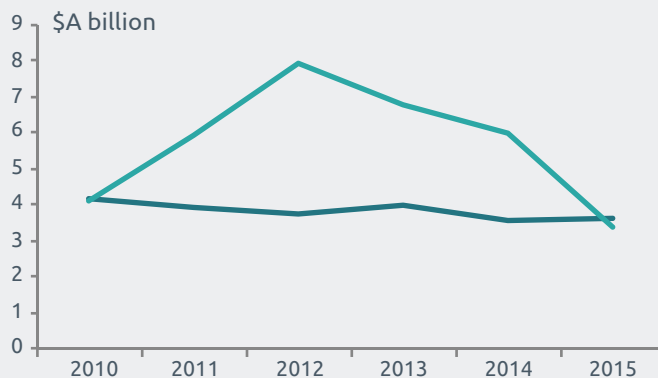
**200**

MIGRANT REMITTANCES FROM AUSTRALIA TO SUB-SAHARAN AFRICA

**US \$470 MILLION**

## TWO-WAY TRADE

- imports to Australia from Sub-Saharan Africa
- exports from Australia to Sub-Saharan Africa

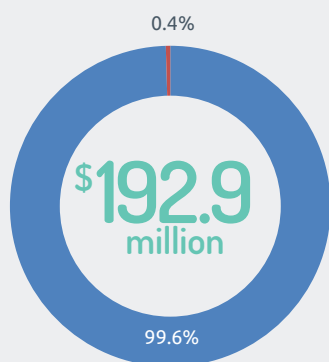


Sources: Department of Foreign Affairs and Trade – scholarships (2016), volunteers (2015-16); investment (DFAT estimate 2015 - 16); Department of Education – international students (2015); Australian Bureau of Statistics – trade (2015), resident population by country of birth (Census 2011); Department of Immigration and Border Protection – visitors (2015-16); World Bank – remittances (2015)

\*Total Australian Government support comprises Official Development Assistance (aid) and Other Official flows (non-aid), based on OECD Development Assistance Committee guidelines.

## Australian Government Expenditure (non-aid) 2015-16

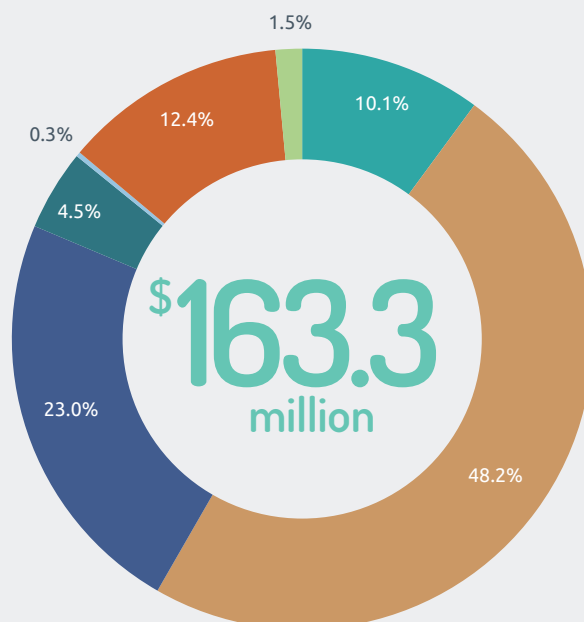
- Peacekeeping missions (non-ODA eligible)\*
- Other engagement



\*Australia's total peacekeeping contribution to Sub-Saharan Africa in 2015-16 was \$203.8 million, of which 7% is reportable as Official Development Assistance under OECD DAC guidelines.

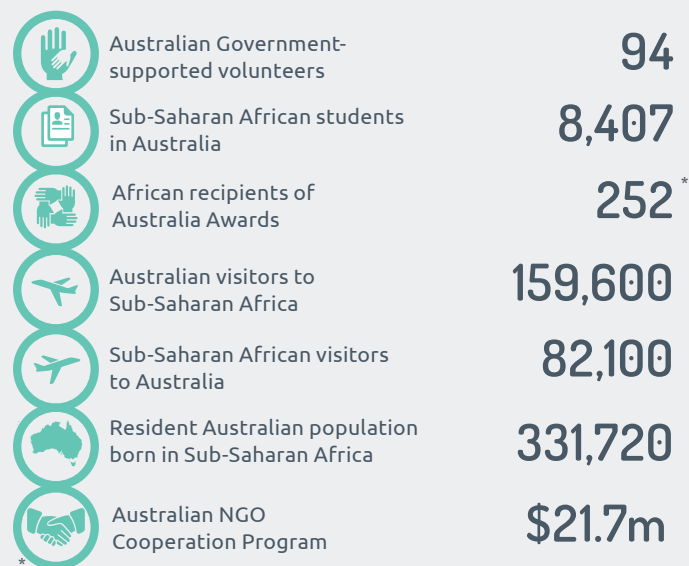
## Australian Aid to Sub-Saharan Africa, by Investment Priorities 2015-16

- Agriculture
- Building resilience
- Education
- Effective governance
- General development support
- Health
- Infrastructure and trade



Scholarship figures include all the countries of Africa.

## CONNECTING PEOPLE



Further information: *Australian Engagement with Developing Countries: Part 2: Official Sector Statistical Summary 2015-16.*



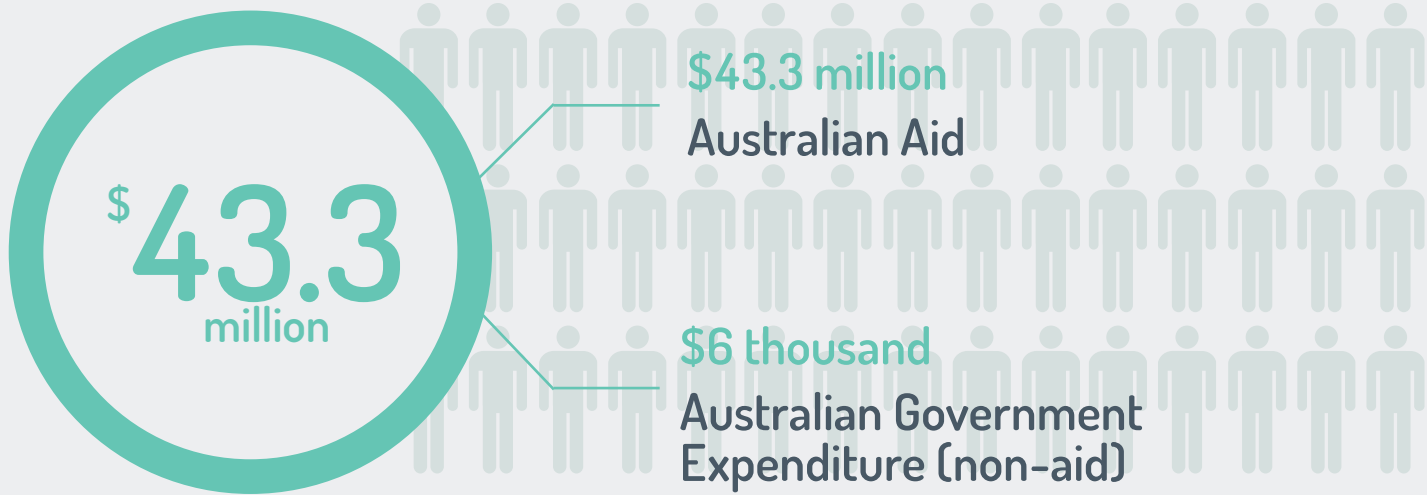
# PALESTINIAN TERRITORIES





# AUSTRALIA AND THE PALESTINIAN TERRITORIES

TOTAL AUSTRALIAN GOVERNMENT SUPPORT\* (2015-16)



MIGRANT REMITTANCES FROM AUSTRALIA TO PALESTINIAN TERRITORIES



MILLION

Sources: Department of Foreign Affairs and Trade – scholarships (2016); Department of Education – international students (2015); resident population by country of birth (Census 2011); World Bank – remittances (2015)  
 \*Total Australian Government support comprises Official Development Assistance (aid) and Other Official flows (non-aid), based on OECD Development Assistance Committee guidelines.

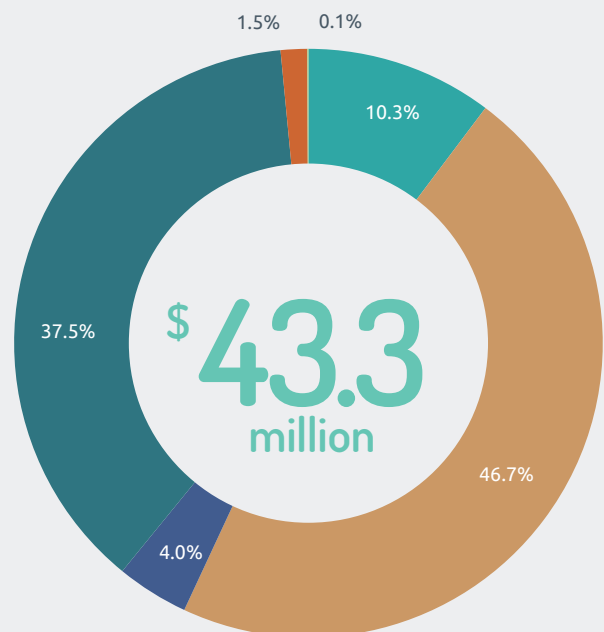
## Australian Government Expenditure (non-aid) 2015-16

■ Art and culture collaboration



## Australian Aid to the Palestinian Territories, by Investment Priorities 2015-16

- Agriculture
- Building resilience
- Education
- Effective governance
- Health
- Infrastructure and trade



## CONNECTING PEOPLE

	Palestinian students in Australia	35
	Palestinian recipients of Australia Awards	11
	Resident Australian population born in the Palestinian Territories	3,020
	Australian NGO Cooperation Program	\$1.5m

AUSTRALIAN SHARE OF TOTAL OFFICIAL DEVELOPMENT ASSISTANCE TO THE PALESTINIAN TERRITORIES - 2.5%  
 AUSTRALIAN AID COMPARED TO THE PALESTINIAN TERRITORIES' ECONOMY - 0.5% OF GNI

Further information: *Australian Engagement with Developing Countries: Part 2: Official Sector Statistical Summary 2015-16.*









