



SWAZILAND

Fact Sheet

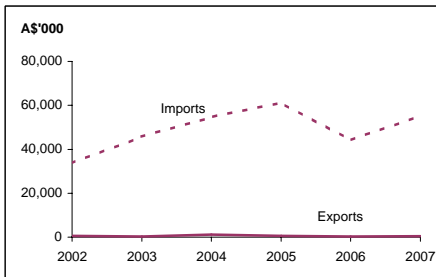
General information:

Fact sheets are updated biannually; May and September

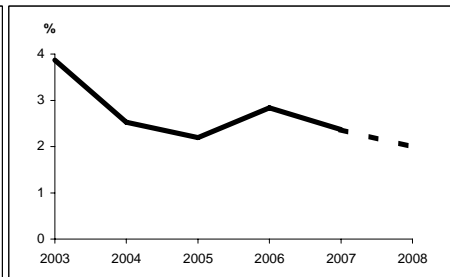
| | | | |
|----------------------------|---------------------------------------|----------------------------|---|
| Capital: | Mbabane | Head of State: | HM King Mswati III |
| Surface area: | 17 thousand sq km | | |
| Official languages: | Swazi, English | | |
| Population: | 1.2 million (2007) | Head of Government: | Prime Minister HE Dr Absalom Themba Dlamini |
| Exchange rate: | A\$1 = 6.9973 Emalangenani (Feb 2008) | | |

| <i>Recent economic indicators:</i> | 2003 | 2004 | 2005 | 2006 | 2007(a) | 2008(b) |
|--|-------|-------|-------|-------|---------|---------|
| GDP (US\$bn) (current prices) (c): | 1.8 | 2.4 | 2.6 | 2.8 | 2.9 | 3.2 |
| GDP (US\$bn) PPP (c)(d): | 4.4 | 4.8 | 5.0 | 5.4 | 5.6 | 5.9 |
| GDP per capita (US\$): | 1,684 | 2,155 | 2,319 | 2,431 | 2,523 | 2,742 |
| GDP per capita PPP (US\$) (d): | 4,035 | 4,322 | 4,480 | 4,671 | 4,836 | 4,964 |
| Real GDP growth (% change YOY) (c): | 3.9 | 2.5 | 2.2 | 2.8 | 2.4 | 2.0 |
| Current account balance (US\$m): | 124 | 52 | -81 | -103 | 36 | -45 |
| Current account balance (% GDP): | 6.8 | 2.2 | -3.1 | -3.7 | 1.2 | -1.4 |
| Goods & services exports (% GDP): | 105.6 | 95.4 | 86.1 | na | na | na |
| Inflation (% change YOY): | 7.4 | 3.4 | 4.8 | 5.3 | 8.2 | 9.8 |

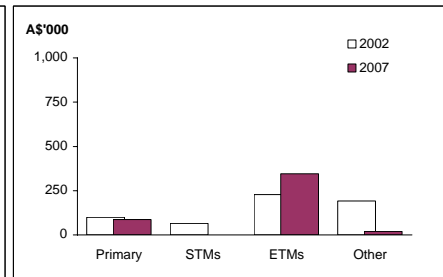
Australia's merchandise trade with Swaziland



Real GDP growth



Australia's merchandise exports to Swaziland



Australia's trade relationship with Swaziland (e):

Australian merchandise trade with Swaziland, 2007:

| | |
|--|--------|
| Exports to Swaziland (A\$'000): | 451 |
| Imports from Swaziland (A\$'000): | 55,250 |
| Total trade (exports + imports) (A\$'000): | 55,700 |

| <u>Total share:</u> | <u>Rank:</u> | <u>Growth (yoy):</u> |
|---------------------|--------------|----------------------|
| 0.0% | 192nd | 37.5% |
| 0.0% | 61st | 25.2% |
| 0.0% | 83rd | 25.3% |

Major Australian exports, 2007 (A\$'000):

| | |
|-------------------------------------|-----|
| Medicaments (incl veterinary) | 222 |
| Preserved fruit & preparations | 86 |
| Essential oils, perfumes & flavours | 68 |
| Lathes | 19 |

Major Australian imports, 2007 (A\$'000):

| | |
|--------------------------------|--------|
| Food preparations | 51,221 |
| Preserved fruit & preparations | 2,847 |
| Computer parts | 241 |
| Gaskets | 148 |

Australia's trade in services with Swaziland, 2007:

| | | <u>Total share:</u> |
|--|----|---------------------|
| Exports of services to Swaziland (A\$m): | na | na |
| Imports of services from Swaziland (A\$m): | na | na |

Swaziland's global merchandise trade relationships:

Swaziland's principal export destinations, 2007:

Swaziland's principal import sources, 2007:

Data not available.

Compiled by the Market Information and Analysis Section, DFAT, using the latest data from the ABS, the IMF and various international sources.

(a) All recent data subject to revision; (b) IMF forecast; (c) Fiscal year ending June 30; (d) PPP is purchasing power parity; (e) Total may not add due to rounding.
na Data not available.