



SAUDI ARABIA

Fact Sheet

General information:

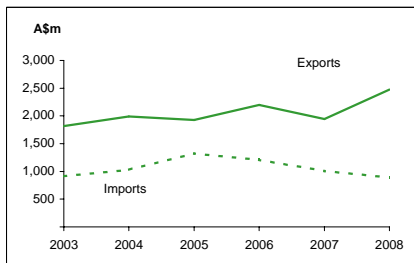
Fact sheets are updated biannually; May and September

Capital:	Riyadh	Head of State and Head of Government:	
Surface area:	2,150 thousand sq km		King Abdullah bin Abdulaziz Al-Saud
Official language:	Arabic		
Population:	24.9 million (2008)		
Exchange rate:	A\$1 = 2.4333 Riyals (Feb 2009)		

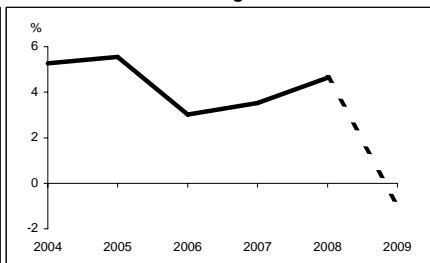
Recent economic indicators:

	2004	2005	2006	2007	2008(a)	2009(b)
GDP (US\$bn) (current prices):	250.7	315.8	356.6	381.9	481.6	374.0
GDP PPP (US\$bn) (c):	439.0	491.0	522.1	555.1	593.4	593.4
GDP per capita (US\$):	11,127	13,658	15,050	15,724	19,345	14,656
GDP per capita PPP (US\$) (c):	19,487	21,236	22,033	22,852	23,834	23,255
Real GDP growth (% change yoy):	5.3	5.6	3.0	3.5	4.6	-0.9
Current account balance (US\$m):	52,097	90,596	99,632	95,762	139,041	-6,802
Current account balance (% GDP):	20.8	28.7	27.9	25.1	28.9	-1.8
Goods & services exports (% GDP):	52.6	59.3	61.3	63.4	71.1	39.6
Inflation (% change yoy):	0.4	0.6	2.3	4.1	9.9	5.5

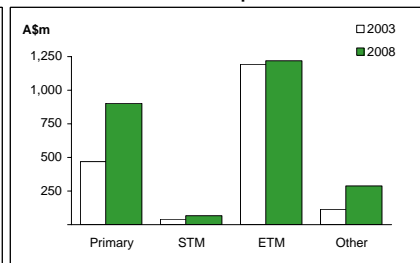
Australia's merchandise trade with Saudi Arabia



Real GDP growth



Australia's merchandise exports to Saudi Arabia



Australia's trade relationship with Saudi Arabia (d):

Australian merchandise trade with Saudi Arabia, 2008:

Exports to Saudi Arabia (A\$m):	2,477
Imports from Saudi Arabia (A\$m):	896
Total trade (exports + imports) (A\$m):	3,373

	Total share:	Rank:	Growth (yoy):
Exports to Saudi Arabia (A\$m):	1.1%	16th	27.3%
Imports from Saudi Arabia (A\$m):	0.4%	34th	-11.0%
Total trade (exports + imports) (A\$m):	0.8%	24th	14.2%

Major Australian exports, 2008* (A\$m):

Passenger motor vehicles	1,028
Barley	508
Meat (excl beef)	84
Live animals (excl seafood)	82

* Includes A\$280m of confidential items, 11% of total exports.

Major Australian imports, 2008* (A\$m):

Crude petroleum	303
Fertilisers (excl crude)	235
Liquefied propane & butane	167
Primary ethylene polymers	24

* Includes A\$135m of confidential items, 15% of total imports.

Australia's trade in services with Saudi Arabia, 2008:

		Total share:
Exports of services to Saudi Arabia (A\$m):	na	na
Imports of services from Saudi Arabia (A\$m):	na	na

Saudi Arabia's global merchandise trade relationships.

Saudi Arabia's principal export destinations, 2007:

1	Japan	26.8%
2	United States	17.5%
3	United Arab Emirates	3.6%
35	Australia	0.2%

Saudi Arabia's principal import sources, 2007:

1	United States	13.6%
2	China	9.7%
3	Germany	8.9%
11	Australia	2.2%

Compiled by the Market Information and Research Section, DFAT, using the latest data from the ABS, the IMF and various international sources.

(a) All recent data subject to revision; (b) IMF/EIU forecast; (c) PPP is purchasing power parity; (d) Total may not add due to rounding.

na Data not available.