

# THE PHILIPPINES

Fact Sheet

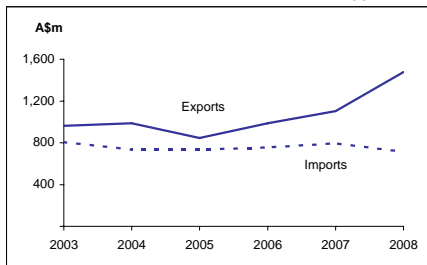
## General information:

Fact sheets are updated biannually; May and September

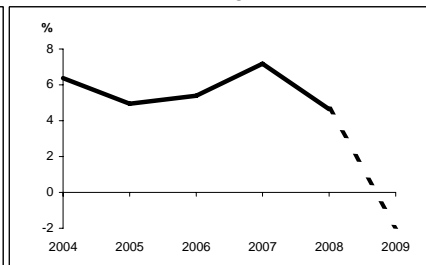
<b>Capital:</b>	Manila	<b>Head of State and Head of Government:</b>	
<b>Surface area:</b>	300 thousand sq km	<b>President HE Gloria Macapagal-Arroyo</b>	
<b>Official languages:</b>	Filipino (Tagalog), English		
<b>Population:</b>	90.3 million (2008)		
<b>Exchange rate:</b>	A\$1 = 30.8766 Pesos (Feb 2009)		

<i>Recent economic indicators:</i>	2004	2005	2006	2007	2008(a)	2009(b)
<b>GDP (US\$bn) (current prices):</b>	86.9	98.8	117.6	144.1	168.6	156.4
<b>GDP PPP (US\$bn) (c):</b>	230.9	250.2	272.3	299.7	320.4	323.4
<b>GDP per capita (US\$):</b>	1,040	1,159	1,352	1,626	1,866	1,698
<b>GDP per capita PPP (US\$) (c):</b>	2,764	2,935	3,130	3,383	3,546	3,509
<b>Real GDP growth (% change yoy):</b>	6.4	5.0	5.4	7.2	4.6	-1.9
<b>Current account balance (US\$m):</b>	1,628	1,984	5,347	7,119	4,227	3,543
<b>Current account balance (% GDP):</b>	1.9	2.0	4.5	4.9	2.5	2.3
<b>Goods &amp; services exports (% GDP):</b>	49.3	45.3	45.1	40.2	38.0	32.6
<b>Inflation (% change yoy):</b>	6.0	7.7	6.2	2.8	9.3	3.4

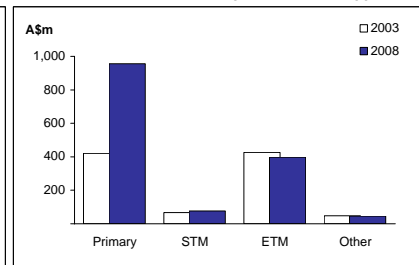
Australia's merchandise trade with the Philippines



Real GDP growth



Australia's merchandise exports to the Philippines



## Australia's trade relationship with the Philippines (d):

Australian merchandise trade with the Philippines, 2008:		<b>Total share:</b>	<b>Rank:</b>	<b>Growth (yoy):</b>
Exports to the Philippines (A\$m):	1,477	0.7%	26th	33.9%
Imports from the Philippines (A\$m):	713	0.3%	36th	-10.6%
Total trade (exports + imports) (A\$m):	2,190	0.5%	30th	15.2%

### Major Australian exports, 2008 (A\$m):

Copper ores & concentrates	212
Crude petroleum	154
Milk & cream	122
Medicaments (incl veterinary)	117

### Major Australian imports, 2008 (A\$m):

Crude petroleum	202
Electrical machinery & parts	36
Radio broadcast receivers	36
Telecom equipment & parts	33

### Australia's trade in services with the Philippines, 2008:

		<b>Total share:</b>
Exports of services to the Philippines (A\$m):	345	0.6%
Imports of services from the Philippines (A\$m):	369	0.7%

### Major Australian service exports, 2008 (A\$m):

Education-related travel	101
Personal travel excl education	77

### Major Australian service imports, 2008 (A\$m):

Personal travel excl education	225
Business-related travel	47

## The Philippines' global merchandise trade relationships.

### The Philippines' principal export destinations, 2008:

1	United States	16.6%
2	Japan	15.7%
3	China	11.2%
14	Australia	1.0%

### The Philippines' principal import sources, 2008:

1	United States	12.7%
2	Japan	11.6%
3	Singapore	10.5%
15	Australia	1.6%

Compiled by the Market Information and Research Section, DFAT, using the latest data from the ABS, the IMF and various international sources.

(a) All recent data subject to revision; (b) IMF/EIU forecast; (c) PPP is purchasing power parity; (d) Total may not add due to rounding.