

NEW CALEDONIA

Fact Sheet

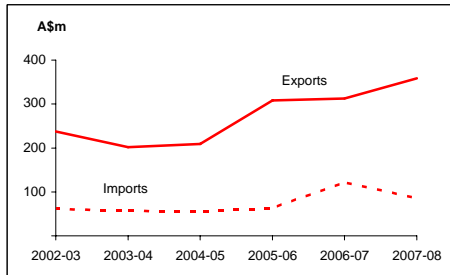
General information:

Fact sheets are updated biannually; May and September

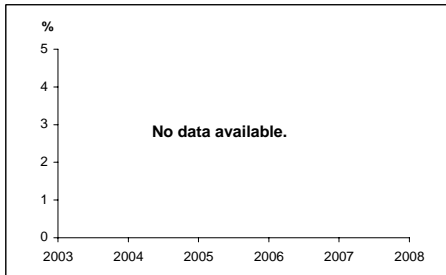
Capital:	Noumea	Head of State:	President HE Mr Nicolas Sarkozy
Surface area:	18.6 thousand sq km		
Official language:	French	Head of Government:	President Mr Philippe Gomès
Population:	240,390 (2007)		
Exchange rate:	A\$1 = 73.3 CFP Francs (2007)		

<i>Recent economic indicators:</i>	2003	2004	2005	2006	2007(a)	2008(b)
GDP (US\$bn) (current prices):	na	5.9	6.3	6.8	7.4	na
GDP PPP (US\$bn) (c):	na	na	na	na	na	na
GDP per capita (US\$):	na	na	26,764	28,331	30,638	na
GDP per capita PPP (US\$) (c):	na	na	na	na	na	na
Real GDP growth (% change yoy):	na	na	na	na	na	na
Current account balance (US\$m):	na	na	na	na	na	na
Current account balance (% GDP):	na	na	na	na	na	na
Goods exports (US\$m):	na	na	17.4	21.5	32.0	na
Inflation (% change yoy):	1.0	0.6	2.6	1.4	1.8	na

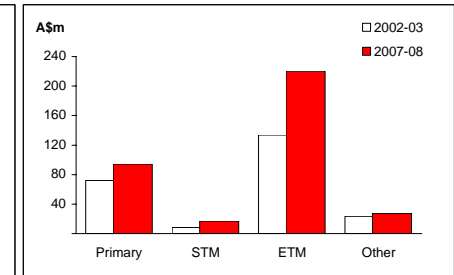
Australia's merchandise trade with New Caledonia



Real GDP growth



Australia's merchandise exports to New Caledonia



Australia's trade relationship with New Caledonia (d):

Australian merchandise trade with New Caledonia, 2007-08:		Total share:	Rank:	Growth (yoy):
Exports to New Caledonia (A\$m):	359	0.2%	39th	14.8%
Imports from New Caledonia (A\$m):	85	0.0%	58th	-30.1%
Total trade (exports + imports) (A\$m):	444	0.1%	47th	2.2%

Major Australian exports, 2007-08 (A\$m):

Civil engineering equipment & parts	26
Coal	22
Prefabricated buildings	18
Wheat	11

Major Australian imports, 2007-08 (A\$m):

Iron ore	79
Crustaceans	1
Non-ferrous waste & scrap	1

Australia's trade in services with New Caledonia, 2007-08:

		Total share:
Exports of services to New Caledonia (A\$m):	na	na
Imports of services from New Caledonia (A\$m):	na	na

New Caledonia's global merchandise trade relationships:

New Caledonia's principal export destinations, 2007:

1	Japan	24.1%
2	France	15.8%
3	China	12.1%
6	Australia	5.2%

New Caledonia's principal import sources, 2007:

1	France	26.6%
2	Singapore	13.6%
3	Australia	10.7%

Compiled by the Market Information and Analysis Section, DFAT, using the latest data from the ABS, the IMF and various international sources.

(a) All recent data subject to revision; (b) EIU forecast; (c) PPP is purchasing power parity; (d) Total may not add due to rounding.

na Data not available.