



MALAYSIA

Fact Sheet

General information:

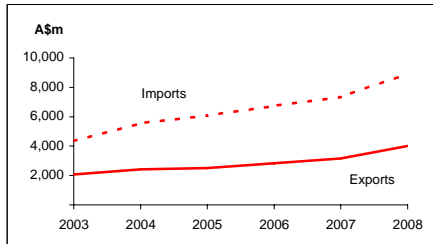
Fact sheets are updated biannually; May and September

Capital:	Kuala Lumpur
Surface area:	330 thousand sq km
Official language:	Malay
Population:	27.3 million (2008)
Exchange rate:	A\$1 = 2.3610 Ringgit (Feb 2009)

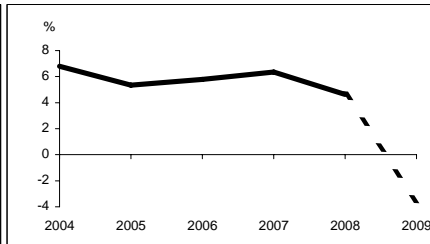
Head of State:	HM The Yang Di-Pertuan Agong XIII Al-Wathiqu Billah Tuanku Mizan Zainal Abidin Ibni Al-Marhum Sultan Mahmud Al-Muktafi Billah Shah
Head of Government:	Prime Minister YAB Datuk Seri Mohd Najib bin Abdul Razak

<i>Recent economic indicators:</i>	2004	2005	2006	2007	2008(a)	2009(b)
GDP (US\$bn) (current prices):	124.8	138.0	156.9	186.7	222.2	212.5
GDP PPP (US\$bn) (c):	277.6	301.3	329.0	359.3	384.1	374.1
GDP per capita (US\$):	4,898	5,319	5,943	6,956	8,141	7,654
GDP per capita PPP (US\$) (c):	10,902	11,610	12,465	13,385	14,072	13,477
Real GDP growth (% change yoy):	6.8	5.3	5.8	6.3	4.6	-3.5
Current account balance (US\$m):	15,080	20,703	26,186	28,699	38,760	27,344
Current account balance (% GDP):	12.1	15.0	16.7	15.4	17.4	12.9
Goods & services exports (% GDP):	115.4	116.9	116.5	109.6	103.5	84.0
Inflation (% change yoy):	1.4	3.0	3.6	2.0	5.4	0.9

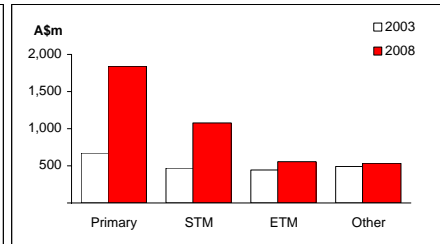
Australia's merchandise trade with Malaysia



Real GDP growth



Australia's merchandise exports to Malaysia



Australia's trade relationship with Malaysia (d):

Australian merchandise trade with Malaysia, 2008:

Exports to Malaysia (A\$m):	4,003
Imports from Malaysia (A\$m):	8,938
Total trade (exports + imports) (A\$m):	12,941

Total share:	Rank:	Growth (yoy):
1.8%	12th	27.1%
4.0%	8th	21.9%
2.9%	11th	23.4%

Major Australian exports, 2008* (A\$m):

Coal	435
Crude petroleum	396
Aluminium	372
Copper	372

Major Australian imports, 2008 (A\$m):

Crude petroleum	3,196
Computers	895
Monitors, projectors & TVs	744
Telecom equipment & parts	311

*Includes A\$490m of confidential items, mainly wheat and sugar, 12% of total exports.

Australia's trade in services with Malaysia, 2008:

Exports of services to Malaysia (A\$m):	1,495
Imports of services from Malaysia (A\$m):	1,009

Total share:

2.8%
1.9%

Major Australian service exports, 2008 (A\$m):

Education-related travel	753
Personal travel excl education	318

Major Australian service imports, 2008 (A\$m):

Transportation	470
Personal travel excl education	327

Malaysia's global merchandise trade relationships:

Malaysia's principal export destinations, 2008:

1	Singapore	14.7%
2	United States	12.5%
3	Japan	10.8%
9	Australia	3.7%

Malaysia's principal import sources, 2008:

1	China	12.8%
2	Japan	12.5%
3	Singapore	10.9%
10	Australia	2.2%

Compiled by the Market Information and Research Section, DFAT, using the latest data from the ABS, the IMF and various international sources.

(a) All recent data subject to revision; (b) IMF/EIU forecast; (c) PPP is purchasing power parity; (d) Total may not add due to rounding.