



# LUXEMBOURG

Fact Sheet

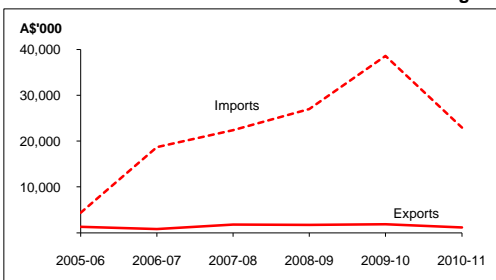
## General information:

Fact sheets are updated biannually; June and December

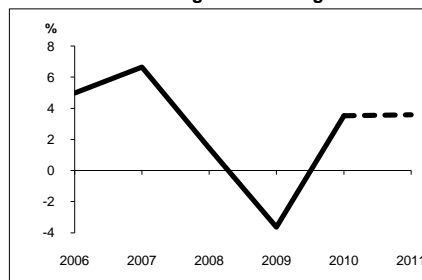
<b>Capital:</b>	Luxembourg	<b>Head of State:</b>	HRH The Grand Duke Henri of Luxembourg
<b>Surface area:</b>	2.6 thousand sq km	<b>Head of Government:</b>	Prime Minister HE Mr Jean-Claude Juncker
<b>Official languages:</b>	French, German, Letzebuergesch		
<b>Population:</b>	0.5 million (2010)		
<b>Exchange rate:</b>	A\$1 = 0.7554 Euros (Jul 2011)		

<b>Recent economic indicators:</b>	2006	2007	2008	2009	2010(a)	2011(b)
<b>GDP (US\$bn) (current prices):</b>	42.6	51.4	58.3	53.0	55.2	62.9
<b>GDP PPP (US\$bn) (c):</b>	35.6	39.0	40.5	39.4	41.3	43.7
<b>GDP per capita (US\$):</b>	90,199	107,098	119,534	106,631	108,952	122,272
<b>GDP per capita PPP (US\$) (c):</b>	75,337	81,359	82,927	79,258	81,466	84,829
<b>Real GDP growth (% change yoy):</b>	5.0	6.6	1.4	-3.6	3.5	3.6
<b>Current account balance (US\$m):</b>	4,415	5,186	3,071	3,638	4,319	6,155
<b>Current account balance (% GDP):</b>	10.4	10.1	5.3	6.9	7.8	9.8
<b>Goods &amp; services exports (% GDP):</b>	157.8	162.4	156.1	141.6	152.8	na
<b>Inflation (% change yoy):</b>	2.7	2.3	3.4	0.4	2.3	3.6

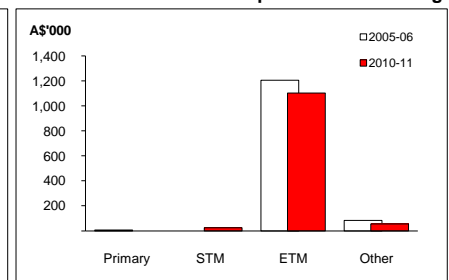
Australia's merchandise trade with Luxembourg



Luxembourg's Real GDP growth



Australia's merchandise exports to Luxembourg



## Australia's trade and investment relationship with Luxembourg (d):

### Australian merchandise trade with Luxembourg, 2010-11:

Exports to Luxembourg (A\$'000):	1,183
Imports from Luxembourg (A\$'000):	22,927
Total trade (exports + imports) (A\$'000):	24,111

<b>Total share:</b>	<b>Rank:</b>	<b>Growth (yoy):</b>
0.0%	175th	-36.3%
0.0%	80th	-40.6%
0.0%	115th	-40.4%

### Major Australian exports, 2010-11 (A\$'000):

Measuring & analysing instruments	459
Medical instruments (incl veterinary)	198
Internal combustion piston engines	150
Optical instruments	70

### Major Australian imports, 2010-11 (A\$'000):

Plastic articles	4,862
Rubber tyres, treads & tubes	3,657
Measuring & analysing instruments	2,242
Refined petroleum	1,603

### Australia's trade in services with Luxembourg, 2010-11:

Exports of services to Luxembourg (A\$m):	na	<b>Total share:</b>	na
Imports of services from Luxembourg (A\$m):	na		na

### Australia's investment relationship with Luxembourg, 2010 (e):

Australia's investment in Luxembourg (A\$m):	11,044	<b>Total:</b>	11,044	<b>FDI:</b>	np
Luxembourg's investment in Australia (A\$m):	17,712		17,712		1,649

## Luxembourg's global merchandise trade relationships:

### Luxembourg's principal export destinations, 2010:

1	Germany	28.3%
2	France	16.1%
3	Belgium	12.6%
39	Australia	0.2%

### Luxembourg's principal import sources, 2010:

1	Germany	25.4%
2	Belgium	24.0%
3	France	14.4%
62	Australia	0.0%

Compiled by the Market Information and Research Section, DFAT, using the latest data from the ABS, the IMF and various international sources.

(a) All recent data subject to revision; (b) IMF forecast; (c) PPP is purchasing power parity; (d) Total may not add due to rounding; (e) Stock, as at 31 December. Released annually by the ABS. na Data not available. np Data not published. .. Data not meaningful.