



LITHUANIA

Fact Sheet

General information:

Fact sheets are updated biannually; June and December

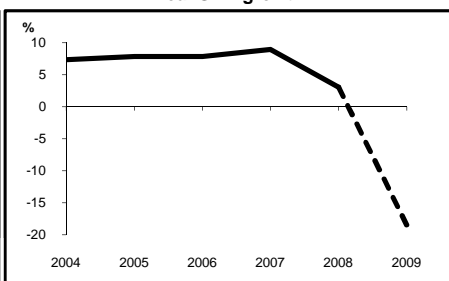
Capital:	Vilnius	Head of State:	
Surface area:	65 thousand sq km	President HE Ms Dalia Grybauskaite	
Official language:	Lithuanian		
Population:	3.3 million (2009)	Head of Government:	
Exchange rate:	A\$1 = 2.0192 Litai (Aug 2009)	Prime Minister Mr Andrius Kubilius	

Recent economic indicators:	2004	2005	2006	2007	2008(a)	2009(b)
GDP (US\$bn) (current prices):	22.5	26.0	30.1	38.9	47.3	36.0
GDP PPP (US\$bn) (c):	43.4	48.5	54.1	60.6	63.7	52.7
GDP per capita (US\$):	6,563	7,608	8,863	11,520	14,086	10,775
GDP per capita PPP (US\$) (c):	12,623	14,218	15,927	17,943	18,977	15,803
Real GDP growth (% change yoy):	7.4	7.8	7.8	8.9	3.0	-18.5
Current account balance (US\$m):	-1,724	-1,831	-3,218	-5,692	-5,475	362
Current account balance (% GDP):	-7.6	-7.1	-10.7	-14.6	-11.6	1.0
Goods & services exports (% GDP):	52.1	57.3	59.1	54.5	60.3	57.3
Inflation (% change yoy):	1.2	2.7	3.8	5.8	11.1	3.5

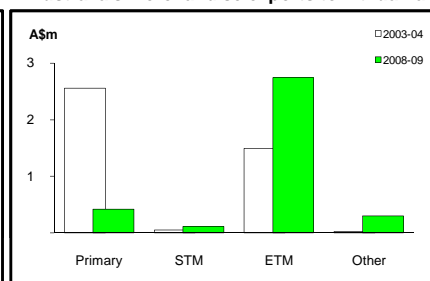
Australia's merchandise trade with Lithuania



Real GDP growth



Australia's merchandise exports to Lithuania



Australia's trade and investment relationship with Lithuania (d):

Australian merchandise trade with Lithuania, 2008-09:

Exports to Lithuania (A\$m):	4	Total share:	0.0%	Rank:	150th	Growth (yoy):	-47.8%
Imports from Lithuania (A\$m):	39		0.0%		69th		43.4%
Total trade (exports + imports) (A\$m):	42		0.0%		92nd		24.9%

Major Australian exports, 2008-09 (A\$m):

Specialised machinery & parts	1
-------------------------------	---

Major Australian imports, 2008-09 (A\$m):

Furniture, mattresses & cushions	14
Rubber tyres, treads & tubes	14
Builders' joinery & carpentry of wood	2
Wood, simply worked	2

Australia's trade in services with Lithuania, 2008-09:

Exports of services to Lithuania (A\$m):	na	Total share:	na
Imports of services from Lithuania (A\$m):	na		na

Australia's investment relationship with Lithuania, 2008 (e):

Australia's investment in Lithuania (A\$m):	na	Total:	na	FDI:	na
Lithuania's investment in Australia (A\$m):	na		na		na

Lithuania's global merchandise trade relationships:

Lithuania's principal export destinations, 2008:

1	Russian Federation	16.0%
2	Latvia	11.6%
3	Germany	7.2%
54	Australia	0.1%

Lithuania's principal import sources, 2008:

1	Russian Federation	30.2%
2	Germany	11.7%
3	Poland	10.0%
68	Australia	0.0%

Compiled by the Market Information and Research Section, DFAT, using the latest data from the ABS, the IMF and various international sources.

(a) All recent data subject to revision; (b) IMF/EIU forecast; (c) PPP is purchasing power parity; (d) Total may not add due to rounding; (e) Stock, as at 31 December. Released annually by the ABS. na Data not available.