

LIBYA

Fact Sheet

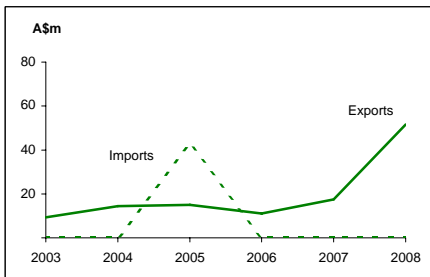
General information:

Fact sheets are updated biannually; May and September

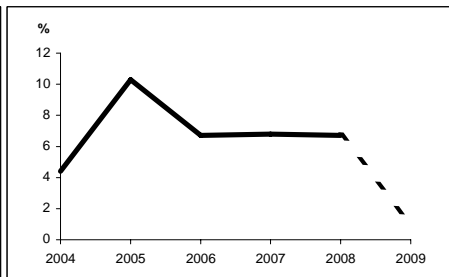
Capital:	Tripoli	Head of State:	Colonel Muammar Al-Qaddafi
Surface area:	1,760 thousand sq km		
Official language:	Arabic		
Population:	6.2 million (2008)	Head of Government:	Dr Al Baghdadi Ali Al-Mahmodi
Exchange rate:	A\$1 = 0.8692 Dinars (Dec 2008)		

<i>Recent economic indicators:</i>	2004	2005	2006	2007	2008(a)	2009(b)
GDP (US\$bn) (current prices):	33.3	45.5	55.1	69.9	100.1	62.9
GDP PPP (US\$bn) (c):	62.6	68.5	75.5	82.8	90.3	92.1
GDP per capita (US\$):	5,800	7,764	9,225	11,475	16,115	9,937
GDP per capita PPP (US\$) (c):	10,904	11,703	12,640	13,593	14,533	14,540
Real GDP growth (% change yoy):	4.4	10.3	6.7	6.8	6.7	1.1
Current account balance (US\$m):	7,410	17,454	25,232	23,622	39,217	5,238
Current account balance (% GDP):	22.3	38.4	45.8	33.8	39.2	8.3
Goods & services exports (% GDP):	53.7	64.6	68.9	67.4	86.6	54.2
Inflation (% change yoy):	1.0	2.9	1.4	6.2	10.4	6.5

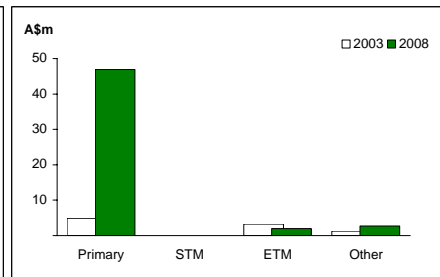
Australia's merchandise trade with Libya



Real GDP growth



Australia's merchandise exports to Libya



Australia's trade relationship with Libya (d):

Australian merchandise trade with Libya, 2008:		Total share:	Rank:	Growth (yoy):
Exports to Libya (A\$m):	52	0.0%	70th	194.7%
Imports from Libya (A\$m):	0	0.0%	198th	33.3%
Total trade (exports + imports) (A\$m):	52	0.0%	88th	194.6%

Major Australian exports, 2008 (A\$m):

Meat (excl beef)	23
Live animals (excl seafood)	21
Milk & cream	1
Fruit, prepared or preserved	1

Major Australian imports, 2008 (A\$m):

No significant imports were recorded.

Australia's trade in services with Libya, 2008:

		Total share:
Exports of services to Libya (A\$m):	na	na
Imports of services from Libya (A\$m):	na	na

Libya's global merchandise trade relationships:

Libya's principal export destinations, 2008:

1	Italy	40.4%
2	Germany	12.8%
3	France	7.9%
	Australia	na

Libya's principal import sources, 2008:

1	Italy	22.7%
2	Germany	8.8%
3	China	8.5%
39	Australia	0.3%

Compiled by the Market Information and Research Section, DFAT, using the latest data from the ABS, the IMF and various international sources.

(a) All recent data subject to revision; (b) IMF/EIU forecast; (c) PPP is purchasing power parity; (d) Total may not add due to rounding.

na Data not available.