



ISRAEL

Fact Sheet

General information:

Fact sheets are updated biannually; June and December

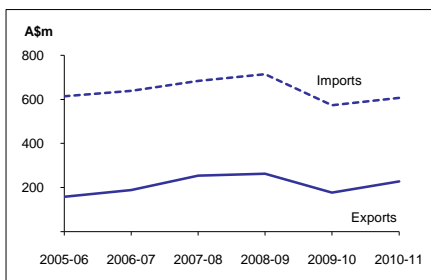
Surface area:	22 thousand sq km
Official languages:	Hebrew, Arabic
Population:	7.4 million (2010)
Exchange rate:	A\$1 = 3.6820 New Sheqalim (Jul 2011)

Head of State:
President HE Mr Shimon Peres

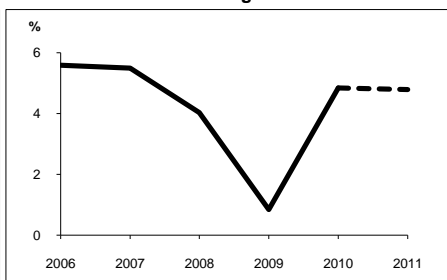
Head of Government:
Prime Minister Mr Benjamin Netanyahu

<i>Recent economic indicators:</i>	2006	2007	2008	2009	2010(a)	2011(b)
GDP (US\$bn) (current prices):	145.5	167.1	201.7	194.9	217.4	245.3
GDP PPP (US\$bn) (c):	176.3	191.4	203.5	207.4	220.0	235.4
GDP per capita (US\$):	21,359	24,008	28,347	26,802	29,264	32,298
GDP per capita PPP (US\$) (c):	25,887	27,497	28,610	28,526	29,602	31,005
Real GDP growth (% change yoy):	5.6	5.5	4.0	0.8	4.8	4.8
Current account balance (US\$m):	7,387	4,882	1,527	7,063	6,385	729
Current account balance (% GDP):	5.1	2.9	0.8	3.6	2.9	0.3
Goods & services exports (% GDP):	43.0	42.7	40.4	34.8	37.0	37.6
Inflation (% change yoy):	2.1	0.5	4.6	3.3	2.7	3.4

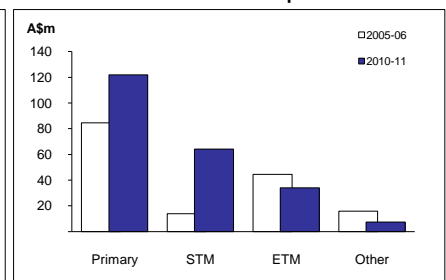
Australia's merchandise trade with Israel



Real GDP growth



Australia's merchandise exports to Israel



Australia's trade and investment relationship with Israel (d):

Australian merchandise trade with Israel, 2010-11:		Total share:	Rank:	Growth (yoy):
Exports to Israel (A\$m):	227	0.1%	46th	28.9%
Imports from Israel (A\$m):	608	0.3%	40th	6.1%
Total trade (exports + imports) (A\$m):	835	0.2%	42nd	11.4%

Major Australian exports, 2010-11 (A\$m):

Coal	57
Aluminium	43
Live animals (excl seafood)	42
Pearls & gems	18

Major Australian imports, 2010-11 (A\$m):

Pearls & gems	69
Mineral manufactures	62
Telecom equipment & parts	45
Fertilisers (excl crude)	39

Australia's trade in services with Israel, 2010-11:

		Total share:
Exports of services to Israel (A\$m):	na	na
Imports of services from Israel (A\$m):	na	na

Australia's investment relationship with Israel, 2010 (e):

	Total:	FDI:
Australia's investment in Israel (A\$m):	509	np
Israel's investment in Australia (A\$m):	138	np

Israel's global merchandise trade relationships:

Israel's principal export destinations, 2010:

1	United States	31.7%
2	Hong Kong, SAR of China	6.7%
3	Belgium	5.3%
22	Australia	0.9%

Israel's principal import sources, 2010:

1	United States	11.3%
2	China	8.0%
3	Germany	6.2%
39	Australia	0.2%

Compiled by the Market Information and Research Section, DFAT, using the latest data from the ABS, the IMF and various international sources.

(a) All recent data subject to revision; (b) IMF/EIU forecast; (c) PPP is purchasing power parity; (d) Total may not add due to rounding; (e) Stock, as at 31 December.

Released annually by the ABS. na Data not available. np Data not published. .. Data not meaningful.