



INDIA

Fact Sheet

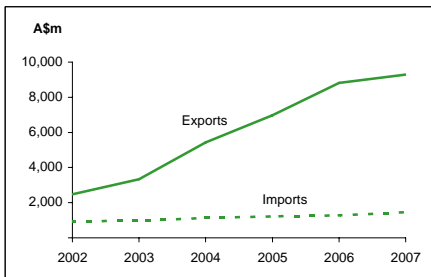
General information:

Fact sheets are updated biannually; May and September

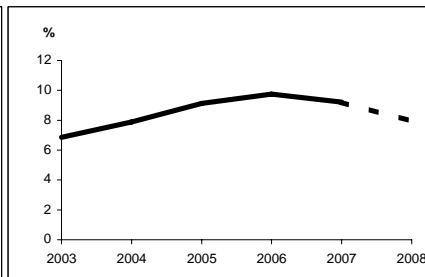
Capital:	New Delhi	Head of State:	
Surface area:	3,287 thousand sq km	Head of Government:	Prime Minister The Hon Dr Manmohan Singh
Official languages:	Hindi, English		
Population:	1,124.0 million (2007)		
Exchange rate:	A\$1 = 36.2758 Rupees (Feb 2008)		

<i>Recent economic indicators:</i>	2003	2004	2005	2006	2007(a)	2008(b)
GDP (US\$bn) (current prices) (c):	573.2	669.4	783.1	877.2	1,098.9	1,232.9
GDP PPP (US\$bn) (d):	1,876.6	2,096.2	2,354.4	2,665.5	2,988.9	3,289.8
GDP per capita (US\$):	542	623	717	792	978	1,082
GDP per capita PPP (US\$) (d):	1,774	1,950	2,157	2,406	2,659	2,886
Real GDP growth (% change YOY) (c):	6.9	7.9	9.1	9.7	9.2	7.9
Current account balance (US\$m):	8,773	781	-10,285	-9,800	-19,345	-37,865
Current account balance (% GDP):	1.5	0.1	-1.3	-1.1	-1.8	-3.1
Goods & services exports (% GDP):	14.8	17.4	20.2	22.7	21.2	20.6
Inflation (% change YOY):	3.8	3.8	4.2	6.2	6.4	5.2

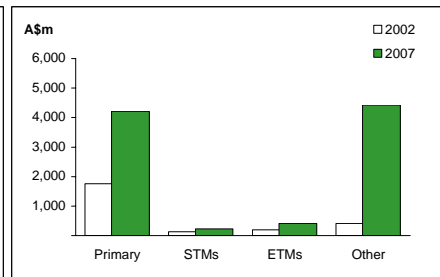
Australia's merchandise trade with India



Real GDP growth



Australia's merchandise exports to India



Australia's trade relationship with India (e):

Australian merchandise trade with India, 2007:		Total share:	Rank:	Growth (yoy):
Exports to India (A\$m):	9,288	5.5%	6th	5.4%
Imports from India (A\$m):	1,459	0.8%	24th	14.0%
Total trade (exports + imports) (A\$m):	10,746	3.0%	10th	6.5%

Major Australian exports, 2007 (A\$m):

Non-monetary gold	4,167
Coal	2,396
Copper ores	1,113
Wool	151

Major Australian imports, 2007 (A\$m):

Pearls & gems	108
Rotating electric plant	88
Jewellery	63
Medicaments (incl veterinary)	38

Australia's trade in services with India, 2007:

Exports of services to India (A\$m):	2,062	Total share: 4.3%
Imports of services from India (A\$m):	459	1.0%

Major Australian service exports, 2007 (A\$m):

Education-related travel	1,621
Personal travel excl education	144

Major Australian service imports, 2007 (A\$m):

Personal travel excl education	255
Computer & information services	77

India's global merchandise trade relationships:

India's principal export destinations, 2006:

1	United States	15.4%
2	United Arab Emirates	9.5%
3	China	6.4%
32	Australia	0.7%

India's principal import sources, 2006:

1	China	9.0%
2	Saudi Arabia	6.2%
3	United States	5.7%
8	Australia	3.7%

Compiled by the Market Information and Analysis Section, DFAT, using the latest data from the ABS, the IMF and various international sources.

(a) All recent data subject to revision; (b) IMF/EIU forecast; (c) Year beginning April 1st; (d) PPP is purchasing power parity; (e) Total may not add due to rounding.