



DEMOCRATIC PEOPLE'S REPUBLIC OF KOREA

Fact Sheet

General information:

Fact sheets are updated biannually; May and September

Capital:	P'yongyang	Head of State:	
Surface area:	121 thousand sq km	President of the Presidium of the Supreme People's Assembly:	HE Mr Kim Yong-nam
Official language:	Korean	Head of Government:	Prime Minister
Population:	23.2 million (2007)		HE Mr Kim Yong-il
Exchange rate:	A\$1 = 124.0185 NK Won (2008)		

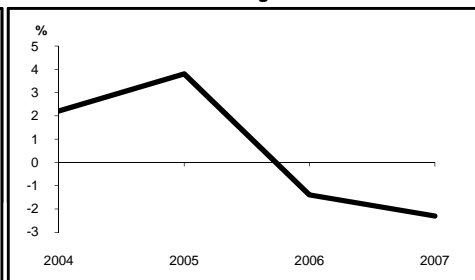
Recent economic indicators:

	2004	2005	2006	2007	2008(a)	2009(b)
GDP (US\$bn) (current prices):	20.7	24.2	25.5	na	na	na
GDP PPP (US\$bn) (c):	na	na	na	na	na	na
GDP per capita (US\$):	912	1,055	1,104	na	na	na
GDP per capita PPP (US\$) (c):	na	na	na	na	na	na
Real GDP growth (% change yoy):	2.2	3.8	-1.4	-2.3	na	na
Current account balance (US\$m):	na	na	na	na	na	na
Current account balance (% GDP):	na	na	na	na	na	na
Goods exports (% GDP):	6.2	5.5	5.8	na	na	na
Inflation (% change yoy):	na	na	na	na	na	na

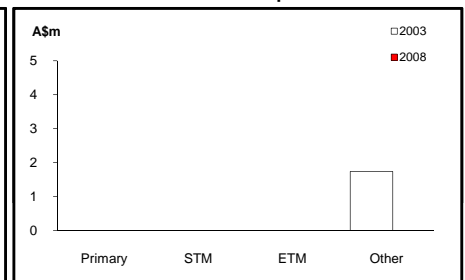
Australia's merchandise trade with DPR Korea



Real GDP growth



Australia's merchandise exports to DPR Korea



Australia's trade and investment relationship with DPR Korea (d):

Australian merchandise trade with DPR Korea, 2008:

		Total share:	Rank:	Growth (yoy):
Exports to DPR Korea (A\$m):	0	na	na	nm
Imports from DPR Korea (A\$m):	8	0.0%	100th	-14.5%
Total trade (exports + imports) (A\$m):	8	0.0%	150th	-14.5%

Major Australian exports, 2008 (A\$m):

No export trade was recorded.

Major Australian imports, 2008 (A\$m):

Medical electrodiagnostic apparatus	1
Hydrocarbons & derivatives	1
Synthetic rubber	1
Primary polyacetals	1

Australia's trade in services with DPR Korea, 2008:

		Total share:
Exports of services to DPR Korea (A\$m):	na	na
Imports of services from DPR Korea (A\$m):	na	na

Australia's investment relationship with DPR Korea, 2008 (e):

	Total:	FDI:
Australia's investment in DPR Korea (A\$m):	np	na
DPR Korea's investment in Australia (A\$m):	np	na

DPR Korea's global merchandise trade relationships:

DPR Korea's principal export destinations, 2008:

1	China	33.4%
2	Venezuela, Bolivarian Rep	15.2%
3	Brazil	6.0%
28	Australia	0.3%

DPR Korea's principal import sources, 2008:

1	China	46.5%
2	Algeria	13.4%
3	Russian Federation	3.9%
	Australia	na

Compiled by the Market Information and Research Section, DFAT, using the latest data from the ABS, the IMF and various international sources.

(a) All recent data subject to revision; (b) EIU forecast; (c) PPP is purchasing power parity; (d) Total may not add due to rounding; (e) Stock, as at 31 December. Released annually by the ABS. na Data not available. nm Data not meaningful. np Data not published.