

CHILE

Fact Sheet

General information:

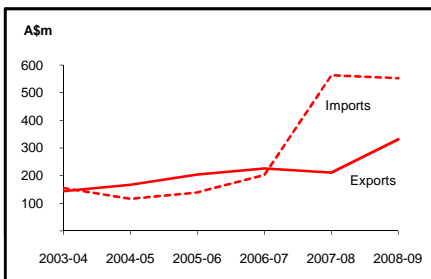
Fact sheets are updated biannually; June and December

Capital:	Santiago
Surface area:	757 thousand sq km
Official language:	Spanish
Population:	17.0 million (2009)
Exchange rate:	A\$1 = 456.3167 Pesos (Aug 2009)

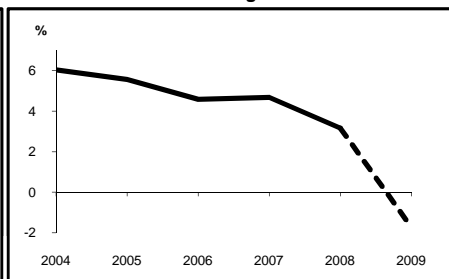
Head of State and Head of Government:
President HE Ms Michelle Bachelet Jeria

<i>Recent economic indicators:</i>	2004	2005	2006	2007	2008(a)	2009(b)
GDP (US\$bn) (current prices):	95.7	118.3	146.8	163.9	169.5	150.4
GDP PPP (US\$bn) (c):	183.2	198.6	214.5	231.0	243.4	242.9
GDP per capita (US\$):	5,982	7,288	8,942	9,881	10,117	8,853
GDP per capita PPP (US\$) (c):	11,455	12,241	13,067	13,926	14,529	14,299
Real GDP growth (% change yoy):	6.0	5.6	4.6	4.7	3.2	-1.7
Current account balance (US\$m):	2,075	1,449	7,154	7,189	-3,439	1,056
Current account balance (% GDP):	2.2	1.2	4.9	4.4	-2.0	0.7
Goods & services exports (% GDP):	40.3	40.9	45.3	46.8	45.6	41.1
Inflation (% change yoy):	1.1	3.1	3.4	4.4	8.7	2.0

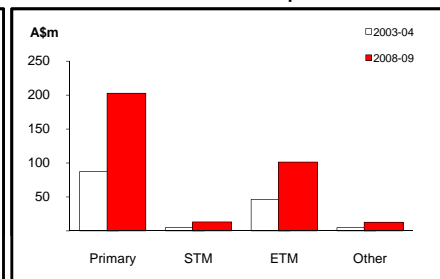
Australia's merchandise trade with Chile



Real GDP growth



Australia's merchandise exports to Chile



Australia's trade and investment relationship with Chile (d):

Australian merchandise trade with Chile, 2008-09:

Exports to Chile (A\$m):	330	Total share:	0.1%	Rank:	43rd	Growth (yoy):	57.4%
Imports from Chile (A\$m):	552		0.3%		37th		-1.9%
Total trade (exports + imports) (A\$m):	883		0.2%		39th		14.2%

Major Australian exports, 2008-09 (A\$m):

Coal	136
Beef	57
Civil engineering equipment & parts	18
Specialised machinery & parts	10

Major Australian imports, 2008-09 (A\$m):

Copper	295
Lead ores & concentrates	53
Pulp & waste paper	40
Wood, simply worked	20

Australia's trade in services with Chile, 2008-09:

Exports of services to Chile (A\$m):	170	Total share:	0.3%
Imports of services from Chile (A\$m):	243		0.4%

Major Australian service exports, 2008-09 (A\$m):

Business & professional	97
Education-related travel	37

Major Australian service imports, 2008-09 (A\$m):

Transportation	107
Business & professional	94

Australia's investment relationship with Chile, 2008 (e):

Australia's investment in Chile (A\$m):	2,029	Total:	1,057
Chile's investment in Australia (A\$m):	np		na

Chile's global merchandise trade relationships:

Chile's principal export destinations, 2008:

1	China	14.2%
2	United States	11.2%
3	Japan	10.4%
23	Australia	0.7%

Chile's principal import sources, 2008:

1	United States	19.4%
2	China	12.0%
3	Brazil	9.3%
23	Australia	0.5%

Compiled by the Market Information and Research Section, DFAT, using the latest data from the ABS, the IMF and various international sources.

(a) All recent data subject to revision; (b) IMF forecast; (c) PPP is purchasing power parity; (d) Total may not add due to rounding; (e) Stock, as at 31 December. Released annually by the ABS. na Data not available. np Data not published.