



BOTSWANA

Fact Sheet

General information:

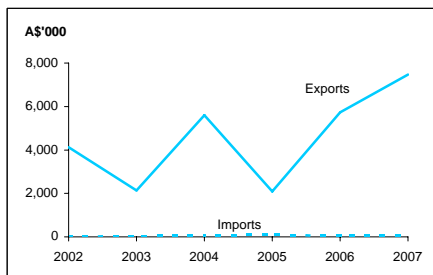
Fact sheets are updated biannually; May and September

Capital:	Gaborone	Head of State and Head of Government:
Surface area:	582 thousand sq km	President HE Mr Seretse Ian Khama
Official language:	English	
Population:	1.6 million (2007)	
Exchange rate:	A\$1 = 5.8876 Pula (Feb 2008)	

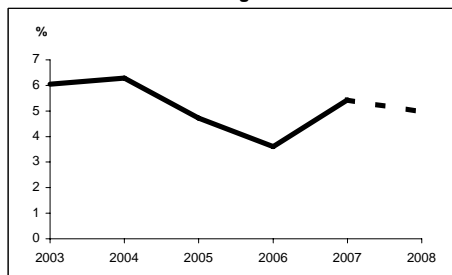
Recent economic indicators:

	2003	2004	2005	2006	2007(a)	2008(b)
GDP (US\$bn) (current prices):	8.3	9.8	10.6	11.0	12.3	13.4
GDP PPP (US\$bn) (c):	18.9	20.6	22.2	23.7	25.7	27.5
GDP per capita (US\$):	5,220	6,189	6,703	7,021	7,888	8,691
GDP per capita PPP (US\$) (c):	11,870	12,958	14,014	15,073	16,450	17,779
Real GDP growth (% change YOY):	6.0	6.3	4.7	3.6	5.4	5.0
Current account balance (US\$m):	464	288	1,621	1,947	2,074	1,159
Current account balance (% GDP):	5.6	2.9	15.3	17.6	16.8	8.6
Goods & services exports (% GDP):	44.1	45.5	49.9	47.9	na	na
Inflation (% change YOY):	9.2	7.0	8.6	11.6	7.1	8.0

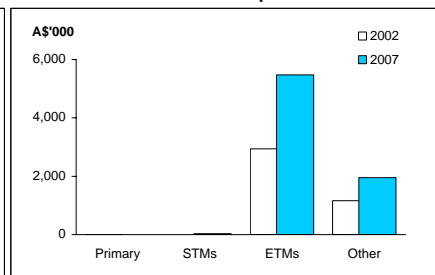
Australia's merchandise trade with Botswana



Real GDP growth



Australia's merchandise exports to Botswana



Australia's trade relationship with Botswana (d):

Australian merchandise trade with Botswana, 2007:

Exports to Botswana (A\$'000):	7,467
Imports from Botswana (A\$'000):	49
Total trade (exports + imports) (A\$'000):	7,516

Total share:	Rank:	Growth (yoy):
0.0%	128th	30.2%
0.0%	186th	25.6%
0.0%	151st	30.2%

Major Australian exports, 2007* (A\$'000):

Aircraft & parts	2,724
Heating & cooling equipment	712
Computers	468
Measuring & controlling instruments	365

Major Australian imports, 2007 (A\$'000):

Telecommunications equipment	24
Blankets & travelling rugs	21
Measuring & controlling instruments	4

*Includes A\$2.0m of confidential items and special transactions, 26% of total exports.

Australia's trade in services with Botswana, 2007:

		Total share:
Exports of services to Botswana (A\$m):	na	na
Imports of services from Botswana (A\$m):	na	na

Botswana's global merchandise trade relationships:

Botswana's principal export destinations, 2007:

1	United Kingdom	65.0%
2	South Africa	10.2%
3	Norway	8.1%
35	Australia	0.0%

Botswana's principal import sources, 2007:

1	South Africa	83.5%
2	China	1.8%
3	Belgium	1.6%
14	Australia	0.4%

Compiled by the Market Information and Analysis Section, DFAT, using the latest data from the ABS, the IMF and various international sources.

(a) All recent data subject to revision; (b) IMF forecast; (c) PPP is purchasing power parity; (d) Total may not add due to rounding.

na Data not available.