



BELGIUM

Fact Sheet

General information:

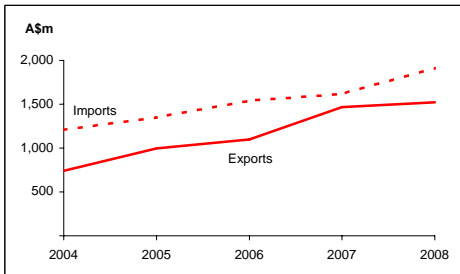
Fact sheets are updated biannually; May and September

Capital:	Brussels
Surface area:	33 thousand sq km
Official languages:	Dutch, French, German
Population:	10.8 million (2008)
Exchange rate:	A\$1 = 0.5076 Euros (Feb 2009)

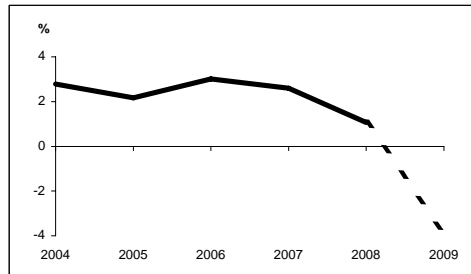
Head of State:	HM King Albert II
Head of Government:	Prime Minister Mr Herman Van Rompuy

<i>Recent economic indicators:</i>	2004	2005	2006	2007	2008(a)	2009(b)
GDP (US\$bn) (current prices):	359.3	377.0	400.3	459.0	506.4	433.5
GDP PPP (US\$bn) (c):	319.1	336.7	358.0	377.2	389.5	378.1
GDP per capita (US\$):	34,397	35,866	37,818	43,033	47,108	40,019
GDP per capita PPP (US\$) (c):	30,546	32,033	33,824	35,363	36,235	34,905
Real GDP growth (% change yoy):	2.8	2.2	3.0	2.6	1.1	-3.8
Current account balance (US\$m):	12,625	9,790	10,588	7,772	-12,891	-10,599
Current account balance (% GDP):	3.5	2.6	2.6	1.7	-2.5	-2.4
Goods & services exports (% GDP):	83.0	84.8	85.6	88.4	91.7	78.5
Inflation (% change yoy):	1.9	2.5	2.3	1.8	4.5	0.5

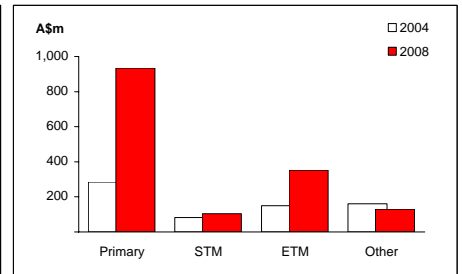
Australia's merchandise trade with Belgium



Real GDP growth



Australia's merchandise exports to Belgium



Australia's trade relationship with Belgium (d):

Australian merchandise trade with Belgium, 2008:		<u>Total share:</u>	<u>Rank:</u>	<u>Growth (yoy):</u>
Exports to Belgium (A\$m):	1,520	0.7%	25th	3.5%
Imports from Belgium (A\$m):	1,912	0.8%	23rd	18.2%
Total trade (exports + imports) (A\$m):	3,433	0.8%	23rd	11.2%

Major Australian exports, 2008 (A\$m):

Coal	666
Nickel	205
Intermediate products of cobalt metallurgy	75
Lead ores & concentrates	70

Major Australian imports, 2008 (A\$m):

Passenger motor vehicles	439
Medicaments (incl veterinary)	202
Pharm products (excl medicaments)	113
Pearls & gems	69

Australia's trade in services with Belgium, 2008 (e):

		<u>Total share:</u>
Exports of services to Belgium (A\$m):	163	0.3%
Imports of services from Belgium (A\$m):	61	0.1%

Major Australian service exports, 2008 (A\$m) (e):

Transportation	58
Personal travel excl education	43

Major Australian service imports, 2008 (A\$m) (e):

Personal travel excl education	17
Business-related travel	7

Belgium's global merchandise trade relationships:

Belgium's principal export destinations, 2008:

1	Germany	20.3%
2	France	17.2%
3	Netherlands	12.3%
31	Australia	0.4%

Belgium's principal import sources, 2008:

1	Netherlands	19.5%
2	Germany	17.3%
3	France	11.0%
34	Australia	0.4%

Compiled by the Market Information and Research Section, DFAT, using the latest data from the ABS, the IMF and various international sources.

(a) All recent data subject to revision; (b) IMF/EIU forecast; (c) PPP is purchasing power parity; (d) Total may not add due to rounding; (e) Includes Luxembourg.