

# BANGLADESH

Fact Sheet

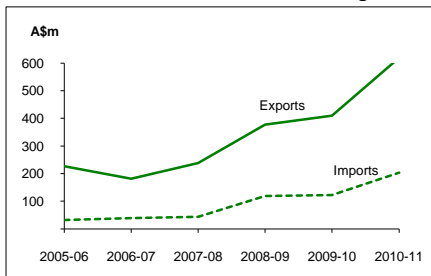
## General information:

Fact sheets are updated biannually; June and December

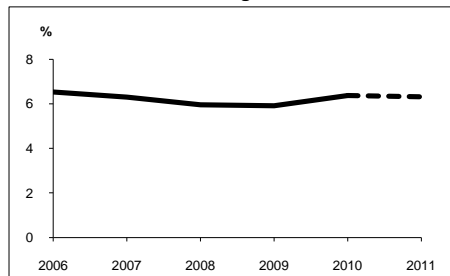
<b>Capital:</b>	Dhaka	<b>Head of State:</b>	
<b>Surface area:</b>	144 thousand sq km	<b>Hon President</b>	HE Zillur Rahman
<b>Official language:</b>	Bengali	<b>Head of Government:</b>	
<b>Population:</b>	164.4 million (2010)	<b>Prime Minister</b>	Sheikh Hasina
<b>Exchange rate:</b>	A\$1 = 80.1869 Taka (Jul 2011)		

Recent economic indicators:	2006	2007	2008	2009	2010(a)	2011(b)
<b>GDP (US\$bn) (current prices):</b>	65.2	74.0	84.5	94.9	105.6	115.0
<b>GDP PPP (US\$bn) (c):</b>	191.0	208.9	226.2	242.1	260.5	282.9
<b>GDP per capita (US\$):</b>	419	469	528	585	642	690
<b>GDP per capita PPP (US\$) (c):</b>	1,228	1,324	1,414	1,493	1,585	1,697
<b>Real GDP growth (% change yoy):</b>	6.5	6.3	6.0	5.9	6.4	6.3
<b>Current account balance (US\$m):</b>	764	829	1,619	3,137	2,368	114
<b>Current account balance (% GDP):</b>	1.2	1.1	1.9	3.3	2.2	0.1
<b>Goods and services exports (% GDP):</b>	19.8	19.1	20.7	18.0	20.5	19.9
<b>Inflation (% change yoy):</b>	6.8	9.1	8.9	5.4	8.1	10.1

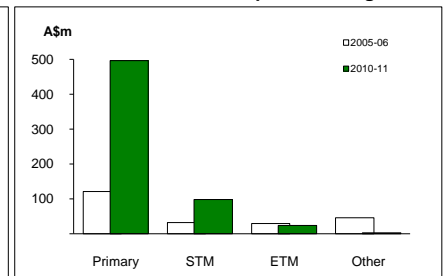
Australia's merchandise trade with Bangladesh



Real GDP growth



Australia's merchandise exports to Bangladesh



## Australia's trade and investment relationship with Bangladesh (d):

Australian merchandise trade with Bangladesh, 2010-11:		Total share:	Rank:	Growth (yoy):
Exports to Bangladesh (A\$m):	620	0.3%	30th	51.3%
Imports from Bangladesh (A\$m):	203	0.1%	53rd	66.2%
Total trade (exports + imports) (A\$m):	823	0.2%	43rd	54.8%

### Major Australian exports, 2010-11 (A\$m):

Wheat	289
Cotton	88
Vegetables	71
Fertilisers (excl crude)	63

### Major Australian imports, 2010-11 (A\$m):

Clothing	180
Bed, table, toilet & kitchen linen	11
Woven fabrics of jute or of other fibres	4
Sacks & bags	2

### Australia's trade in services with Bangladesh, 2010-11:

		Total share:
Exports of services to Bangladesh (A\$m):	na	na
Imports of services from Bangladesh (A\$m):	na	na

### Australia's investment relationship with Bangladesh, 2010 (e):

	Total:	FDI:
Australia's investment in Bangladesh (A\$m):	19	np
Bangladesh's investment in Australia (A\$m):	3	nil

## Bangladesh's global merchandise trade relationships:

### Bangladesh's principal export destinations, 2009:

1	United States	20.2%
2	Germany	12.7%
3	United Kingdom	8.6%
18	Australia	0.7%

### Bangladesh's principal import sources, 2009:

1	China	16.2%
2	India	12.6%
3	Singapore	7.6%
10	Australia	2.6%

Compiled by the Market Information and Research Section, DFAT, using the latest data from the ABS, the IMF and various international sources.

(a) All recent data subject to revision; (b) IMF/EIU forecast; (c) PPP is purchasing power parity; (d) Total may not add due to rounding; (e) Stock, as at 31 December.

Released annually by the ABS. na Data not available. np Data not published. .. Data not meaningful.