



ALGERIA

Fact Sheet

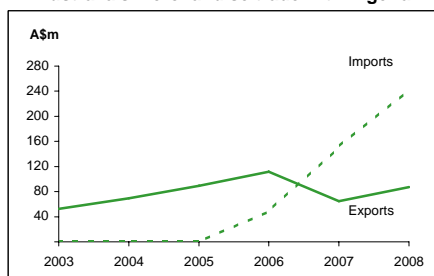
General information:

Fact sheets are updated biannually; May and September

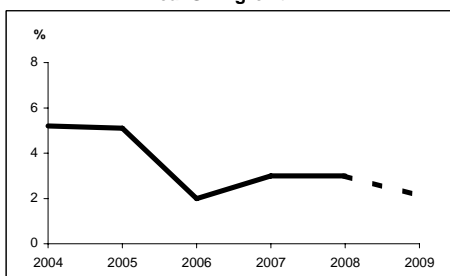
Capital:	Algiers	Head of State:	
Surface area:	2,382 thousand sq km	President	HE Mr Abdelaziz Bouteflika
Official language:	Arabic	Head of Government:	
Population:	34.8 million (2008)	Prime Minister	HE Mr Abdelaziz Belkhadem
Exchange rate:	A\$1 = 48.3938 Dinars (Jan 2009)		

<i>Recent economic indicators:</i>	2004	2005	2006	2007	2008(a)	2009(b)
GDP (US\$bn) (current prices):	85.1	102.7	116.8	135.3	159.7	128.6
GDP PPP (US\$bn) (c):	181.5	198.9	209.4	221.5	233.1	240.2
GDP per capita (US\$):	2,631	3,122	3,456	3,934	4,588	3,640
GDP per capita PPP (US\$) (c):	5,609	6,044	6,195	6,439	6,698	6,801
Real GDP growth (% change yoy):	5.2	5.1	2.0	3.0	3.0	2.1
Current account balance (US\$m):	11,116	21,183	28,950	30,600	37,082	-2,166
Current account balance (% GDP):	13.1	20.6	24.8	22.6	23.2	-1.7
Goods & services exports (% GDP):	40.0	47.2	48.7	47.3	51.3	42.2
Inflation (% change yoy):	3.6	1.6	2.5	3.6	4.5	4.6

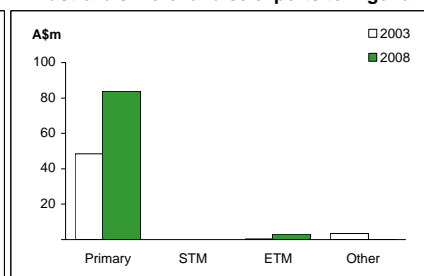
Australia's merchandise trade with Algeria



Real GDP growth



Australia's merchandise exports to Algeria



Australia's trade relationship with Algeria (d):

Australian merchandise trade with Algeria, 2008:

Exports to Algeria (A\$m):	87	Total share:	0.0%	Rank:	62nd	Growth (yoy):	34.0%
Imports from Algeria (A\$m):	243		0.1%		48th		60.0%
Total trade (exports + imports) (A\$m):	330		0.1%		56th		52.2%

Major Australian exports, 2008 (A\$m):

Coal	71
Milk & cream	5
Cheese & curd	5
Meat (excl beef)	2

Major Australian imports, 2008 (A\$m):

Crude petroleum	242
-----------------	-----

Australia's trade in services with Algeria, 2008:

Exports of services to Algeria (A\$m):	na	Total share:	na
Imports of services from Algeria (A\$m):	na		na

Algeria's global merchandise trade relationships:

Algeria's principal export destinations, 2007:

1	United States	30.1%
2	Italy	13.2%
3	Spain	8.9%
26	Australia	0.0%

Algeria's principal import sources, 2007:

1	France	16.7%
2	Italy	8.7%
3	China	8.6%
44	Australia	0.2%

Compiled by the Market Information and Research Section, DFAT, using the latest data from the ABS, the IMF and various international sources.

(a) All recent data subject to revision; (b) IMF/EIU forecast; (c) PPP is purchasing power parity; (d) Total may not add due to rounding.

na Data not available. nm Data not meaningful.