

SAUDI ARABIA

Fact Sheet

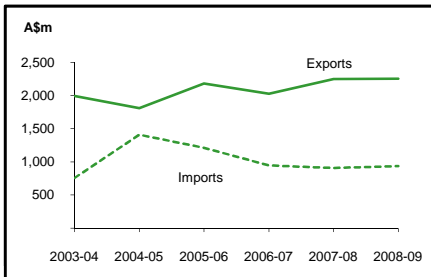
General information:

Fact sheets are updated biannually; June and December

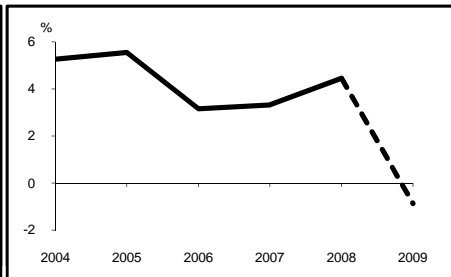
Capital:	Riyadh	Head of State and Head of Government:	
Surface area:	2,150 thousand sq km	King Abdullah bin Abdulaziz Al-Saud	
Official language:	Arabic		
Population:	25.5 million (2009)		
Exchange rate:	A\$1 = 3.1290 Riyals (Aug 2009)		

Recent economic indicators:	2004	2005	2006	2007	2008(a)	2009(b)
GDP (US\$bn) (current prices):	250.7	315.8	356.6	384.4	469.4	379.5
GDP PPP (US\$bn) (c):	439.0	491.0	523.0	555.8	592.9	596.8
GDP per capita (US\$):	11,127	13,658	15,050	15,825	18,855	14,871
GDP per capita PPP (US\$) (c):	19,487	21,236	22,069	22,881	23,814	23,388
Real GDP growth (% change yoy):	5.3	5.6	3.2	3.3	4.4	-0.9
Current account balance (US\$m):	52,097	90,110	99,066	93,454	134,225	15,389
Current account balance (% GDP):	20.8	28.5	27.8	24.3	28.6	4.1
Goods & services exports (% GDP):	52.6	59.1	61.3	63.0	68.9	46.0
Inflation (% change yoy):	0.4	0.6	2.3	4.1	9.9	4.5

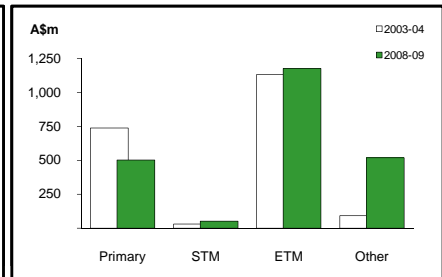
Australia's merchandise trade with Saudi Arabia



Real GDP growth



Australia's merchandise exports to Saudi Arabia



Australia's trade and investment relationship with Saudi Arabia (d):

Australian merchandise trade with Saudi Arabia, 2008-09:

Exports to Saudi Arabia (A\$m):	2,250
Imports from Saudi Arabia (A\$m):	933
Total trade (exports + imports) (A\$m):	3,183

Total share: Rank: Growth (yoy):

1.0%	16th	0.1%
0.4%	34th	2.7%
0.7%	23rd	0.9%

Major Australian exports, 2008-09* (A\$m):

Passenger motor vehicles	969
Barley	121
Live animals (excl seafood)	99
Meat (excl beef)	93

* Includes A\$511m of confidential items, 23% of total exports.

Major Australian imports, 2008-09* (A\$m):

Crude petroleum	412
Fertilisers (excl crude)	177
Liquefied propane & butane	134
Primary ethylene polymers	23

* Includes A\$154m of confidential items, 16% of total imports.

Australia's trade in services with Saudi Arabia, 2008-09:

Exports of services to Saudi Arabia (A\$m):	na
Imports of services from Saudi Arabia (A\$m):	na

Total share:

na

Australia's investment relationship with Saudi Arabia, 2008 (e):

Australia's investment in Saudi Arabia (A\$m):	
Saudi Arabia's investment in Australia (A\$m):	

Total: FDI:

67 np
np np

Saudi Arabia's global merchandise trade relationships:

Saudi Arabia's principal export destinations, 2007:

1	Japan	26.8%
2	United States	17.5%
3	United Arab Emirates	3.6%
35	Australia	0.2%

Saudi Arabia's principal import sources, 2007:

1	United States	13.6%
2	China	9.7%
3	Germany	8.9%
11	Australia	2.2%

Compiled by the Market Information and Research Section, DFAT, using the latest data from the ABS, the IMF and various international sources.

(a) All recent data subject to revision; (b) IMF/EIU forecast; (c) PPP is purchasing power parity; (d) Total may not add due to rounding; (e) Stock, as at 31 December. Released annually by the ABS. na Data not available. np Data not published.