



CANADA

Fact Sheet

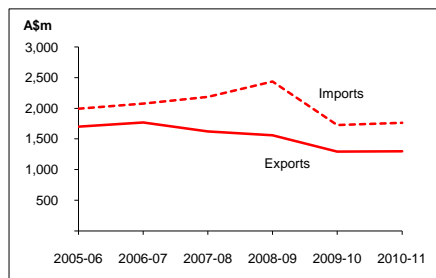
General information:

Fact sheets are updated biannually; June and December

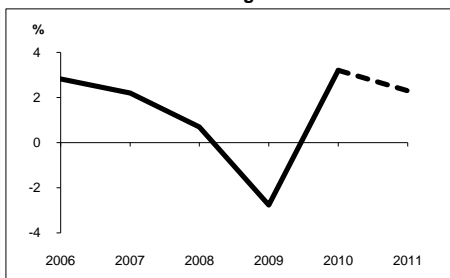
Capital:	Ottawa	Head of State:	HM Queen Elizabeth II, represented by
Surface area:	9,971 thousand sq km		Governor-General HE the Rt Hon David Johnston
Official languages:	English, French	Head of Government:	Prime Minister The Rt Hon Stephen Joseph Harper
Population:	34.1 million (2010)		
Exchange rate:	A\$1 = C\$1.0286 (Jul 2011)		

Recent economic indicators:	2006	2007	2008	2009	2010(a)	2011(b)
GDP (US\$bn) (current prices):	1,278.6	1,424.1	1,502.7	1,337.6	1,577.0	1,758.7
GDP PPP (US\$bn) (c):	1,201.6	1,263.6	1,300.6	1,277.9	1,334.1	1,391.1
GDP per capita (US\$):	39,302	43,307	45,176	39,728	46,303	51,147
GDP per capita PPP (US\$) (c):	36,934	38,428	39,099	37,955	39,171	40,458
Real GDP growth (% change yoy):	2.8	2.2	0.7	-2.8	3.2	2.3
Current account balance (US\$m):	18,064	11,890	4,945	-39,573	-49,375	-58,626
Current account balance (% GDP):	1.4	0.8	0.3	-3.0	-3.1	-3.3
Goods & services exports (% GDP):	36.0	34.9	35.3	28.8	29.3	30.6
Inflation (% change yoy):	2.0	2.1	2.4	0.3	1.8	2.9

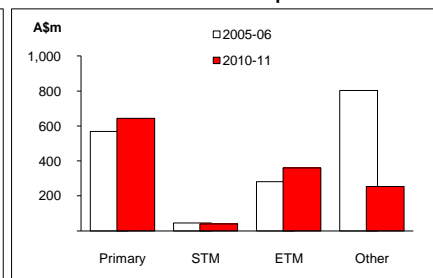
Australia's merchandise trade with Canada



Real GDP growth



Australia's merchandise exports to Canada



Australia's trade and investment relationship with Canada (d):

Australian merchandise trade with Canada, 2010-11:

Exports to Canada (A\$m):	1,296	Total share:	0.5%	Rank:	24th	Growth (yoy):	0.1%
Imports from Canada (A\$m):	1,762		0.8%		22nd		2.1%
Total trade (exports + imports) (A\$m):	3,059		0.7%		21st		1.2%

Major Australian exports, 2010-11* (A\$m):

Nickel ores & concentrates	293
Alcoholic beverages	206
Medicaments (incl veterinary)	61
Meat (excl beef)	54

*Includes A\$248m of confidential items, 19% of total exports.

Major Australian imports, 2010-11 (A\$m):

Civil engineering equipment & parts	123
Meat (excl beef)	112
Medicaments (incl veterinary)	85
Measuring & analysing instruments	82

Australia's trade in services with Canada, 2010-11:

Exports of services to Canada (A\$m):	799	Total share:	1.6%
Imports of services from Canada (A\$m):	801		1.4%

Major Australian service exports, 2010-11 (A\$m):

Personal travel excl education	314
Education-related travel	134

Major Australian service imports, 2010-11 (A\$m):

Personal travel excl education	484
Transport	130

Australia's investment relationship with Canada, 2010 (e):

Australia's investment in Canada (A\$m):	39,174	Total:	39,174	FDI:	23,447
Canada's investment in Australia (A\$m):	21,497		21,497		16,377

Canada's global merchandise trade relationships:

Canada's principal export destinations, 2010:

1	United States	74.9%
2	United Kingdom	4.1%
3	China	3.3%
16	Australia	0.4%

Canada's principal import sources, 2010:

1	United States	50.4%
2	China	11.0%
3	Mexico	5.5%
31	Australia	0.4%

Compiled by the Market Information and Research Section, DFAT, using the latest data from the ABS, the IMF and various international sources.

(a) All recent data subject to revision; (b) IMF forecast; (c) PPP is purchasing power parity; (d) Total may not add due to rounding; (e) Stock, as at 31 December. Released annually by the ABS. na Data not available. np Data not published. .. Data not meaningful.