



BELGIUM

Fact Sheet

General information:

Fact sheets are updated biannually; June and December

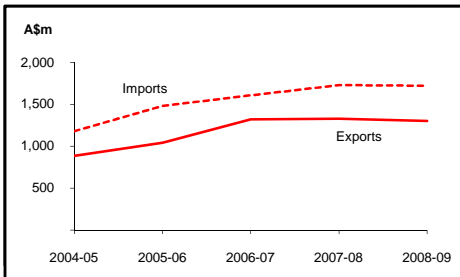
Capital:	Brussels
Surface area:	33 thousand sq km
Official languages:	Dutch, French, German
Population:	10.7 million (2009)
Exchange rate:	A\$1 = 0.5848 Euros (Aug 2009)

Head of State:
HM King Albert II

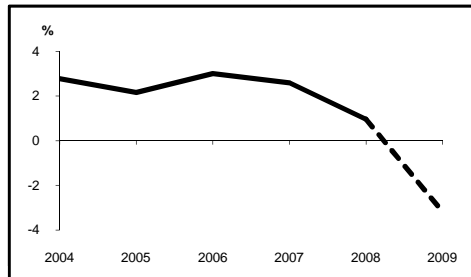
Head of Government:
Prime Minister Mr Herman Van Rompuy

Recent economic indicators:	2004	2005	2006	2007	2008(a)	2009(b)
GDP (US\$bn) (current prices):	359.3	377.0	400.3	459.0	506.2	461.5
GDP PPP (US\$bn) (c):	319.1	336.7	358.1	378.0	389.8	383.3
GDP per capita (US\$):	34,397	35,866	37,818	43,033	47,289	42,965
GDP per capita PPP (US\$) (c):	30,546	32,033	33,835	35,434	36,416	35,683
Real GDP growth (% change yoy):	2.8	2.2	3.0	2.6	1.0	-3.2
Current account balance (US\$m):	12,625	9,790	10,588	7,772	-12,891	-4,455
Current account balance (% GDP):	3.5	2.6	2.6	1.7	-2.5	-1.0
Goods & services exports (% GDP):	83.0	84.7	85.1	87.5	79.3	75.2
Inflation (% change yoy):	1.9	2.5	2.3	1.8	4.5	0.2

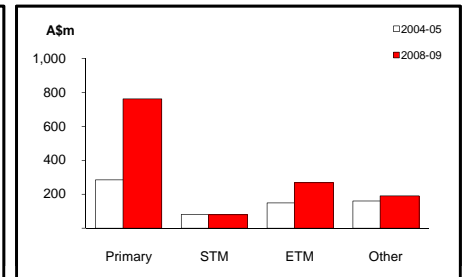
Australia's merchandise trade with Belgium



Real GDP growth



Australia's merchandise exports to Belgium



Australia's trade and investment relationship with Belgium (d):

Australian merchandise trade with Belgium, 2008-09:

Exports to Belgium (A\$m):	1,301
Imports from Belgium (A\$m):	1,719
Total trade (exports + imports) (A\$m):	3,020

Total share:	Rank:	Growth (yoy):
0.6%	25th	-2.0%
0.8%	25th	-0.5%
0.7%	25th	-1.1%

Major Australian exports, 2008-09 (A\$m):

Coal	496
Lead ores & concentrates	105
Nickel	101
Intermediate products of cobalt metallurgy	51

Major Australian imports, 2008-09 (A\$m):

Passenger motor vehicles	273
Medicaments (incl veterinary)	235
Pharm products (excl medicaments)	128
Pearls & gems	63

Australia's trade in services with Belgium, 2008-09 (e):

Exports of services to Belgium (A\$m):	134
Imports of services from Belgium (A\$m):	83

Total share:

0.3%
0.1%

Major Australian service exports, 2008-09 (A\$m) (e):

Personal travel excl education	43
Transportation	37

Major Australian service imports, 2008-09 (A\$m) (e):

Business & professional	36
Personal travel excl education	21

Australia's investment relationship with Belgium, 2008 (f):

	Total:	FDI:
Australia's investment in Belgium (A\$m):	2,645	602
Belgium's investment in Australia (A\$m):	11,762	5,240

Belgium's global merchandise trade relationships:

Belgium's principal export destinations, 2008:

1	Germany	20.3%
2	France	17.2%
3	Netherlands	12.3%
31	Australia	0.4%

Belgium's principal import sources, 2008:

1	Netherlands	19.5%
2	Germany	17.3%
3	France	11.0%
34	Australia	0.4%

Compiled by the Market Information and Research Section, DFAT, using the latest data from the ABS, the IMF and various international sources.

(a) All recent data subject to revision; (b) IMF/EIU forecast; (c) PPP is purchasing power parity; (d) Total may not add due to rounding; (e) Includes Luxembourg;

(f) Stock, as at 31 December. Released annually by the ABS.